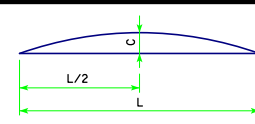
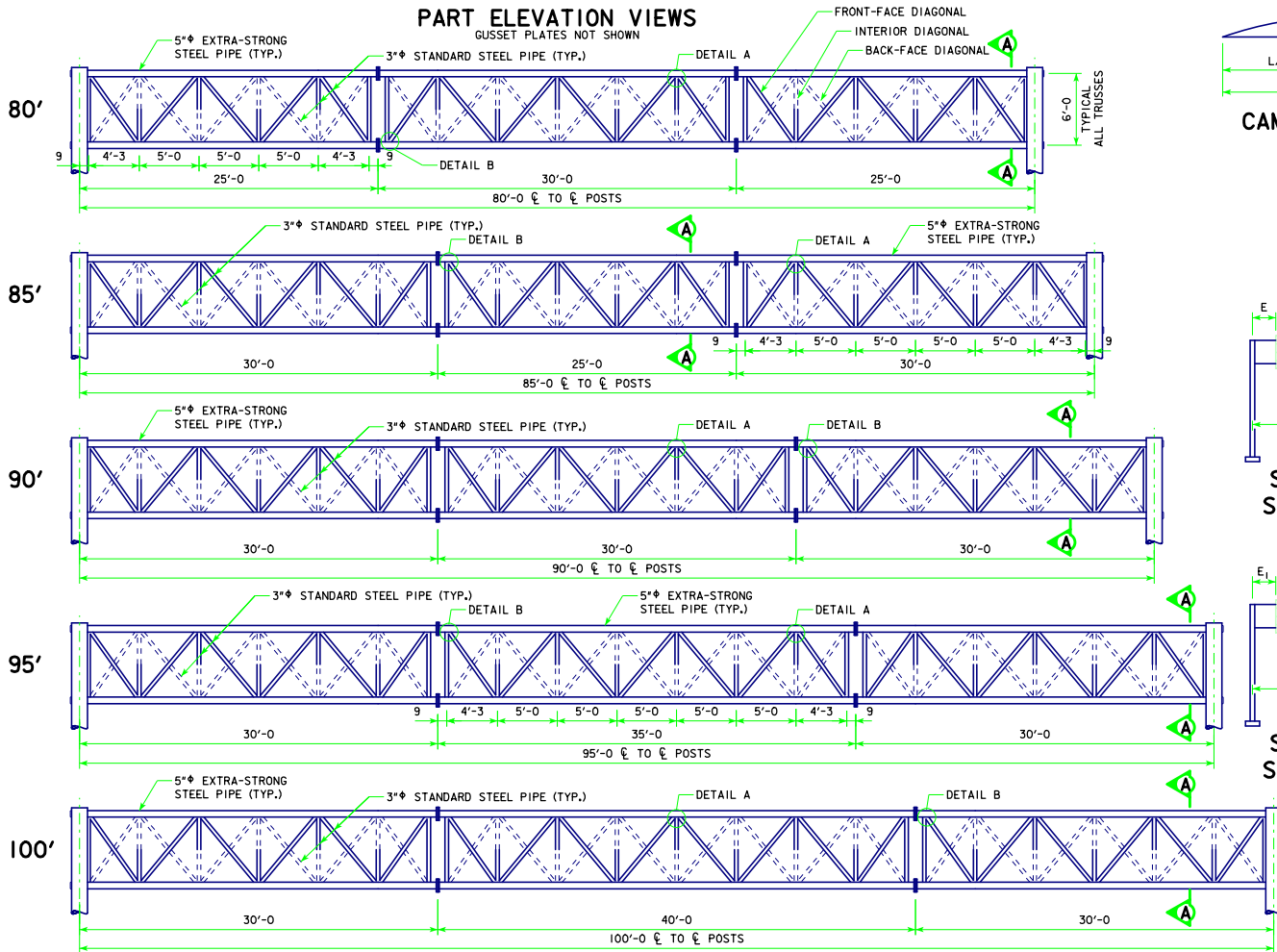


STEELOVERHEADS(ONTRUSS).DGN - SOST-03-11 - THIS SHEET ISSUED 9-11.

**PART ELEVATION VIEWS**

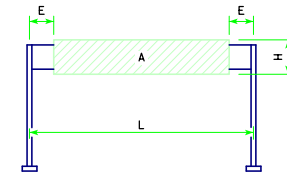


**CAMBER DIAGRAM**

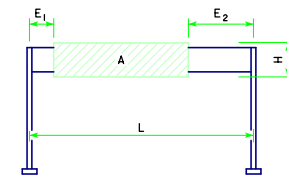
| SPAN L | CAMBER C |
|--------|----------|
| 80'    | 1 3/8"   |
| 85'    | 1 1/2"   |
| 90'    | 1 3/4"   |
| 95'    | 1 7/8"   |
| 100'   | 2 1/4"   |

NOTE: BACK-FACE DIAGONALS AND BOTTOM-FACE DIAGONALS ARE SHOWN WITH DASHED LINES. INTERIOR DIAGONALS ARE SHOWN SOLID NEAR THE FRONT FACE AND TOP FACE. INTERIOR DIAGONALS ARE SHOWN DASHED TOWARDS THE BACK FACE AND BOTTOM FACE.

NOTE: SEE STANDARD SHEET SOST-08-11 FOR SECTION A-A AND DETAILS A, B, C AND D.



**SIGN AREA FOR STEEL OVERHEAD SIGN TRUSS**  
CENTERED

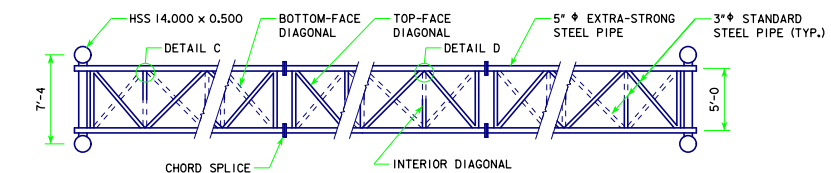


**SIGN AREA FOR STEEL OVERHEAD SIGN TRUSS**  
OFFSET

SIGN OFFSET MAY BE MIRRORED (E<sub>1</sub> AND E<sub>2</sub> VALUES REVERSED).

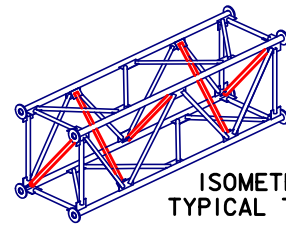
**ALLOWABLE SIGN AREA**

| CENTERED |                  |                     |                      |                |
|----------|------------------|---------------------|----------------------|----------------|
| SPAN     | MAX. SIGN HEIGHT | MIN. END DIST.      |                      | MAX. SIGN AREA |
| L        | H                | E                   |                      | A              |
| 80'      | 19'-0"           | 15'-0"              |                      | 950 S.F.       |
| 85'      | 19'-0"           | 17'-5"              |                      | 950 S.F.       |
| 90'      | 19'-0"           | 20'-0"              |                      | 950 S.F.       |
| 95'      | 19'-0"           | 22'-5"              |                      | 950 S.F.       |
| 100'     | 19'-0"           | 25'-0"              |                      | 950 S.F.       |
|          |                  |                     |                      |                |
| 80'      | 14'-9"           | 8'-0"               |                      | 944 S.F.       |
| 85'      | 14'-9"           | 10'-6"              |                      | 944 S.F.       |
| 90'      | 14'-9"           | 13'-0"              |                      | 944 S.F.       |
| 95'      | 14'-9"           | 15'-6"              |                      | 944 S.F.       |
| 100'     | 14'-9"           | 18'-0"              |                      | 944 S.F.       |
|          |                  |                     |                      |                |
| 85'      | 12'-0"           | 5'-0"               |                      | 900 S.F.       |
| 90'      | 12'-0"           | 5'-6"               |                      | 948 S.F.       |
| 95'      | 12'-0"           | 8'-0"               |                      | 948 S.F.       |
| 100'     | 12'-0"           | 10'-6"              |                      | 948 S.F.       |
| OFFSET   |                  |                     |                      |                |
| SPAN     | MAX. SIGN HEIGHT | MIN. LEFT END DIST. | MIN. RIGHT END DIST. | MAX. SIGN AREA |
| L        | H                | E <sub>1</sub>      | E <sub>2</sub>       | A              |
| 80'      | 19'-0"           | 10'-0"              | 30'-0"               | 760 S.F.       |
| 85'      | 19'-0"           | 10'-0"              | 38'-0"               | 703 S.F.       |
| 90'      | 19'-0"           | 10'-0"              | 44'-0"               | 684 S.F.       |
| 95'      | 19'-0"           | 10'-0"              | 50'-0"               | 665 S.F.       |
| 100'     | 19'-0"           | 10'-0"              | 56'-0"               | 646 S.F.       |
|          |                  |                     |                      |                |
| 85'      | 14'-9"           | 10'-0"              | 13'-0"               | 915 S.F.       |
| 90'      | 14'-9"           | 10'-0"              | 25'-0"               | 811 S.F.       |
| 95'      | 14'-9"           | 10'-0"              | 34'-0"               | 752 S.F.       |
| 100'     | 14'-9"           | 10'-0"              | 41'-0"               | 723 S.F.       |
| 100'     | 12'-0"           | 10'-0"              | 14'-0"               | 912 S.F.       |



**PART TOP VIEW**

NOTE: INTERIOR DIAGONALS HAVE SAME ORIENTATION AT CHORD SPLICE LOCATIONS



**ISOMETRIC VIEW TYPICAL TRUSS UNIT**

LATEST REVISION DATE  
*Thomas E. Mc Donnell*  
APPROVED BY BRIDGE ENGINEER

**Iowa Department of Transportation**  
Highway Division

STANDARD DESIGN

**STEEL OVERHEAD SIGN TRUSS**

SEPTEMBER, 2011

ELEVATION VIEWS FOR TRUSS SPANS  
80'-100' SPANS

SOST-03-11