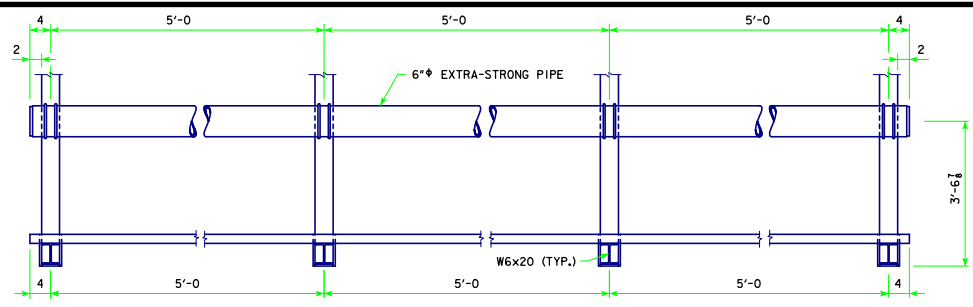
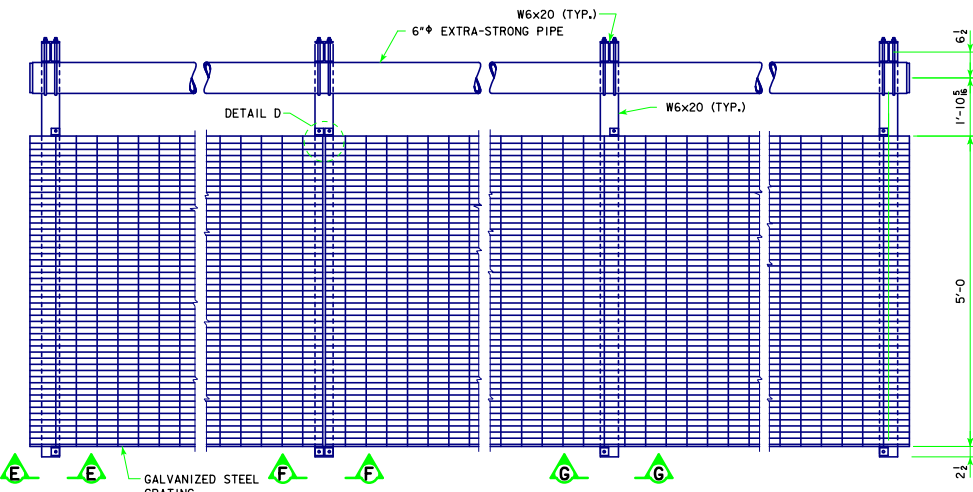


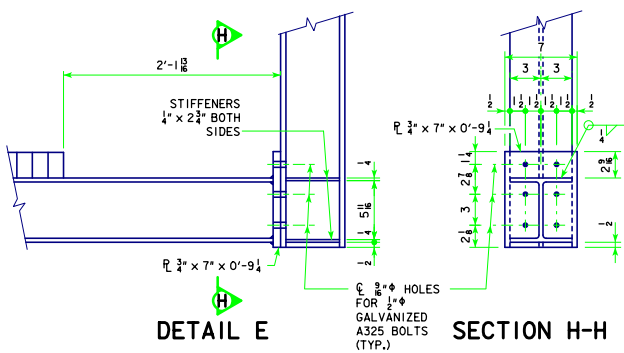
REVISION: 09-14 - CHANGED TYPE AND GAGE OF HOLES FOR CLIP ANGLE BOLTS IN W6x20 - CHANGED WORK PLATFORM SUPPORT BRACKET DIMENSIONS, CHANGED U-BOLT BEND DIAMETER, RDMS/DMS/SUPPORT.DGN - RDMS-03-13 - THIS SHEET ISSUED 04-13.



PART ELEVATION VIEW

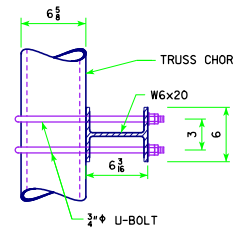


PART PLAN VIEW

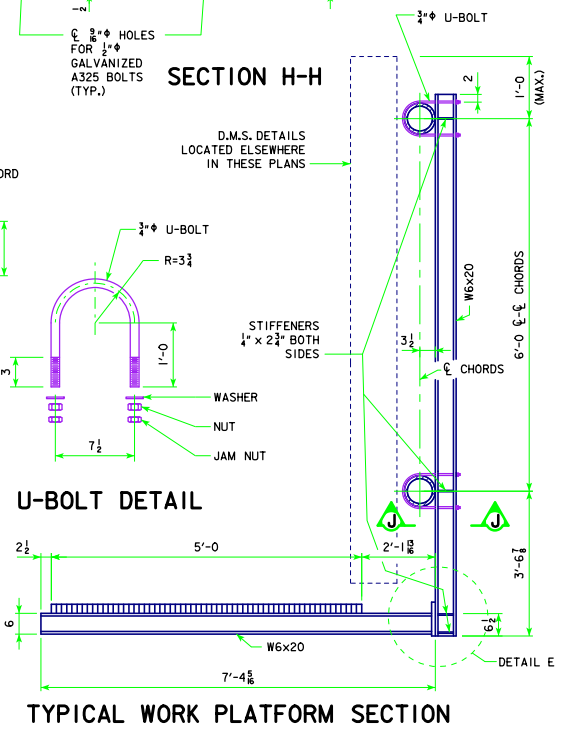


DETAIL E

SECTION H-H

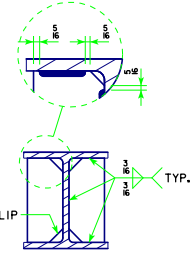


SECTION J-J

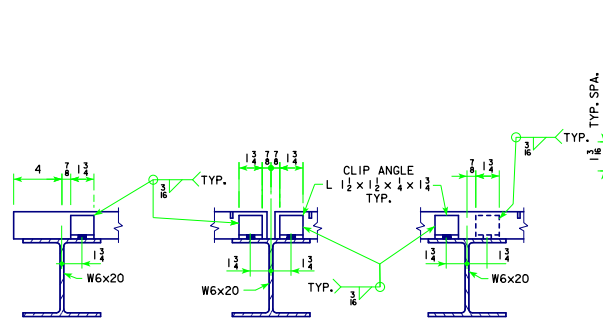


U-BOLT DETAIL

TYPICAL WORK PLATFORM SECTION



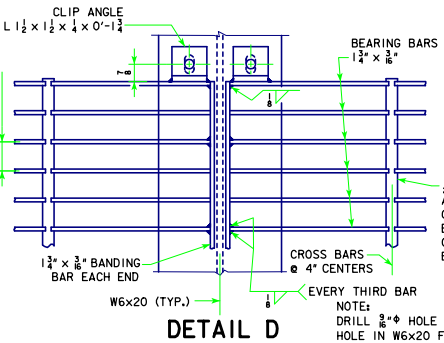
TYPICAL STIFFENER DETAIL



SECTION E-E

SECTION F-F

SECTION G-G



DETAIL D

$1\frac{1}{2} \times \frac{3}{8}$ CROSS BARS OR APPROVED EQUAL. CROSS BARS ARE TO BE PRESSURE LOCKED OR WELDED TO BEARING BARS.
 $1\frac{1}{2} \times \frac{3}{8}$ BANDING BAR EACH END
 EVERY THIRD BAR
 NOTE:
 DRILL $\frac{3}{8}$ " HOLE IN CLIP ANGLE AND $\frac{3}{8}$ " x 1" SLOTTED HOLE IN W6x20 FOR $\frac{1}{2}$ " GALVANIZED A325 BOLT WITH WASHERS, NUT, AND JAM NUT. ADJUST CLIP SO GRATING BEARS ON BEAM.

09-14 LATEST REVISION DATE <i>Thomas E. Mc Donnell</i> APPROVED BY BRIDGE ENGINEER	
	STANDARD DESIGN ROADSIDE DYNAMIC MESSAGE SIGN (DMS) SUPPORT APRIL, 2013
	<div style="text-align: center;"> WORK PLATFORM DETAILS </div> <div style="text-align: right;"> RDMS-03-13 </div>