

PLAN
(SW-542 EXTENSION AND SW-541 INTAKE)

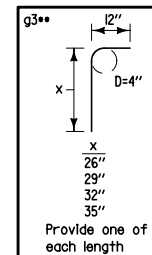
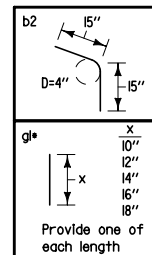
Extension unit may be used on either or both sides of intakes. Details are similar when extension unit is on the opposite side.

Dimensions shown are for the construction of a 6 inch standard curb as a part of pavement. Modifications may be made to conform to other curb shapes.

① The location station is where the centerline of intake meets the back of the curb line.

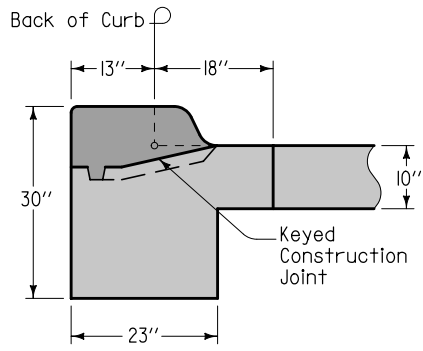
Placing sequence: 1. Base; 2. Walls and Extension; 3. Top; 4. Insert

REINFORCING BAR LIST							
BAR	SIZE	LOCATION	SHAPE	NO.	LENGTH	WEIGHT	SPACING
b2	4	Intake Wall		3	2'-6"	5.0	9"
f1	4	Bottom		3	4'-9"	9.5	9"
f2	4	Bottom		4	1'-7"	4.2	18"
g1	4	Wall		5	Varies*	3.9	12"
g2	4	Wall		1	4'-8"	3.1	-
g3	4	Top		4	Varies**	6.8	18"
g4	4	Top		3	6'-4"	12.7	-
Total						45 lbs.	

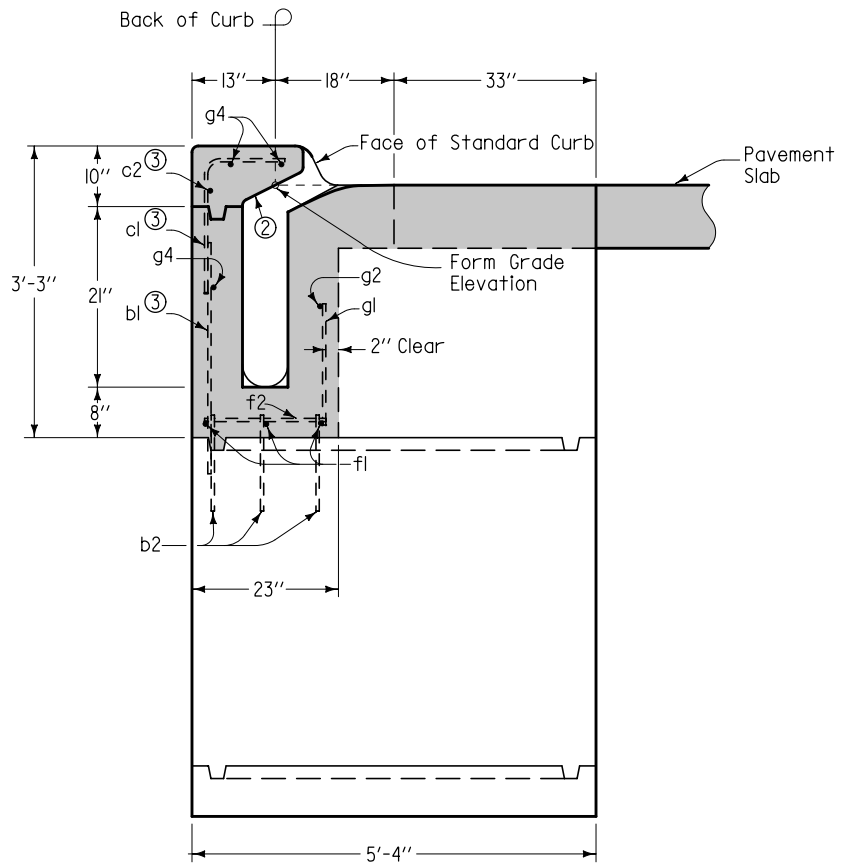


Possible Contract Item:
Intake Extension Unit, SW-542

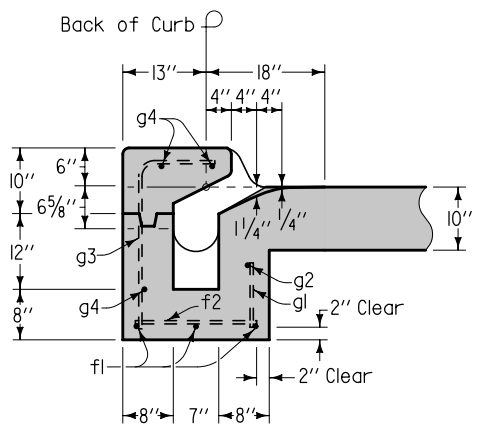
	REVISION
	NEW 10-20-09
STANDARD ROAD PLAN	SW-542
REVISIONS: New. Replaces RA-42.	SHEET 1 of 3
<i>Deanna Mifflin</i> APPROVED BY DESIGN METHODS ENGINEER	
EXTENSION UNIT FOR OPEN-THROAT CURB INTAKE UNDER PAVEMENT	



SECTION A-A




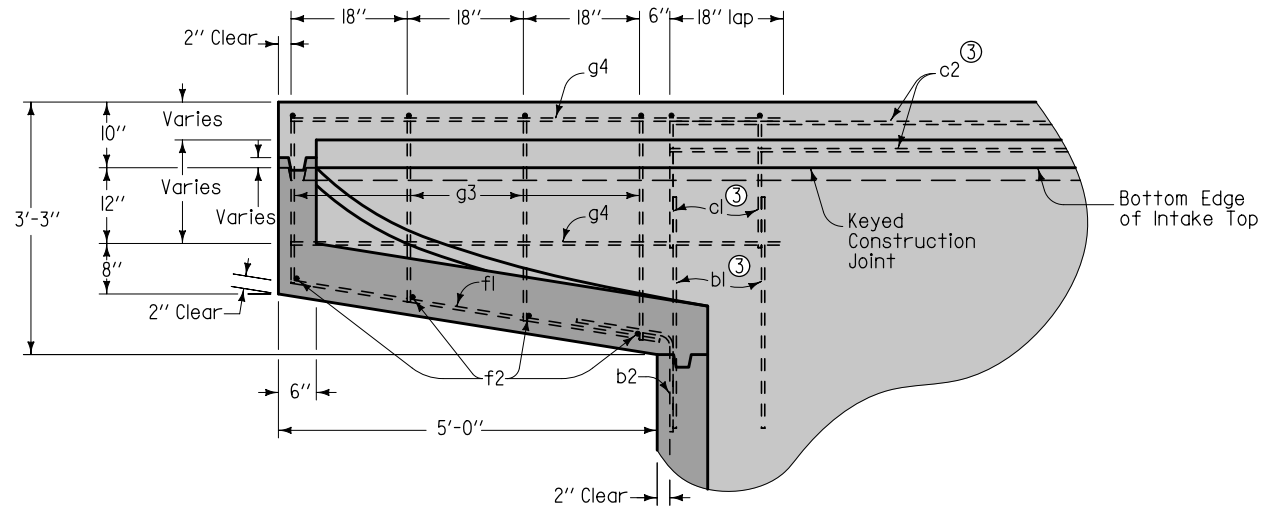
SECTION C-C



SECTION B-B

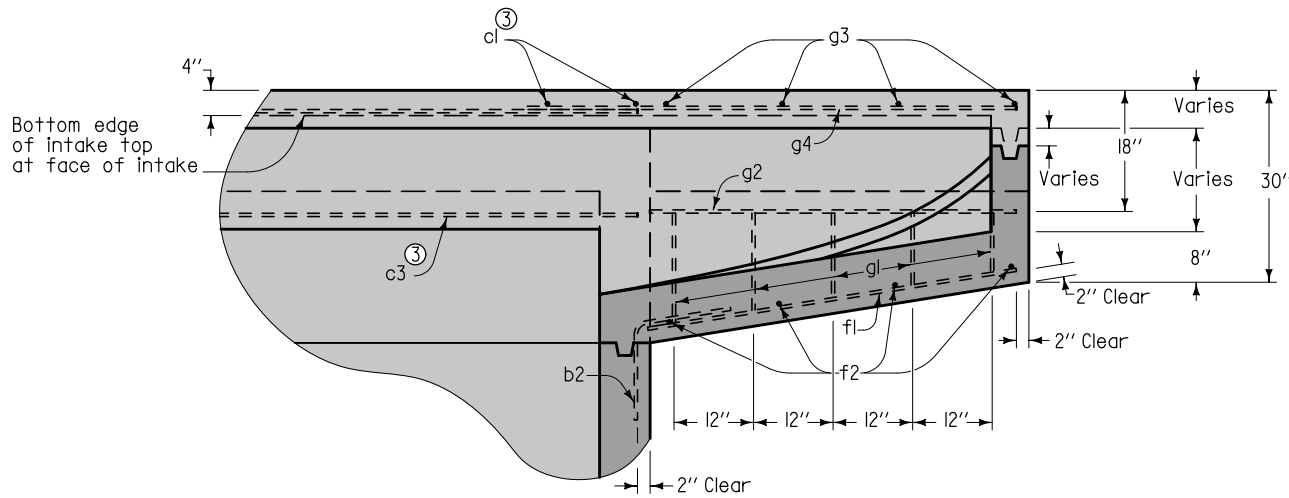
- ② 2:1 Slope (Horizontal:Vertical)
- ③ See SW-541 for reinforcing.

 Iowa Department of Transportation	REVISION NEW 10-20-09
	STANDARD ROAD PLAN SW-542 SHEET 2 of 3
REVISIONS: New. Replaces RA-42.	
<i>Deanna Mifflin</i> APPROVED BY DESIGN METHODS ENGINEER	
EXTENSION UNIT FOR OPEN-THROAT CURB INTAKE UNDER PAVEMENT	




SECTION D-D

③ See SW-541 for reinforcing.



SECTION E-E

 Iowa Department of Transportation	REVISION
	NEW 10-20-09
STANDARD ROAD PLAN	SW-542
REVISIONS: New. Replaces RA-42.	SHEET 3 of 3
<i>Deanna Mifflin</i> APPROVED BY DESIGN METHODS ENGINEER	
EXTENSION UNIT FOR OPEN-THROAT CURB INTAKE UNDER PAVEMENT	