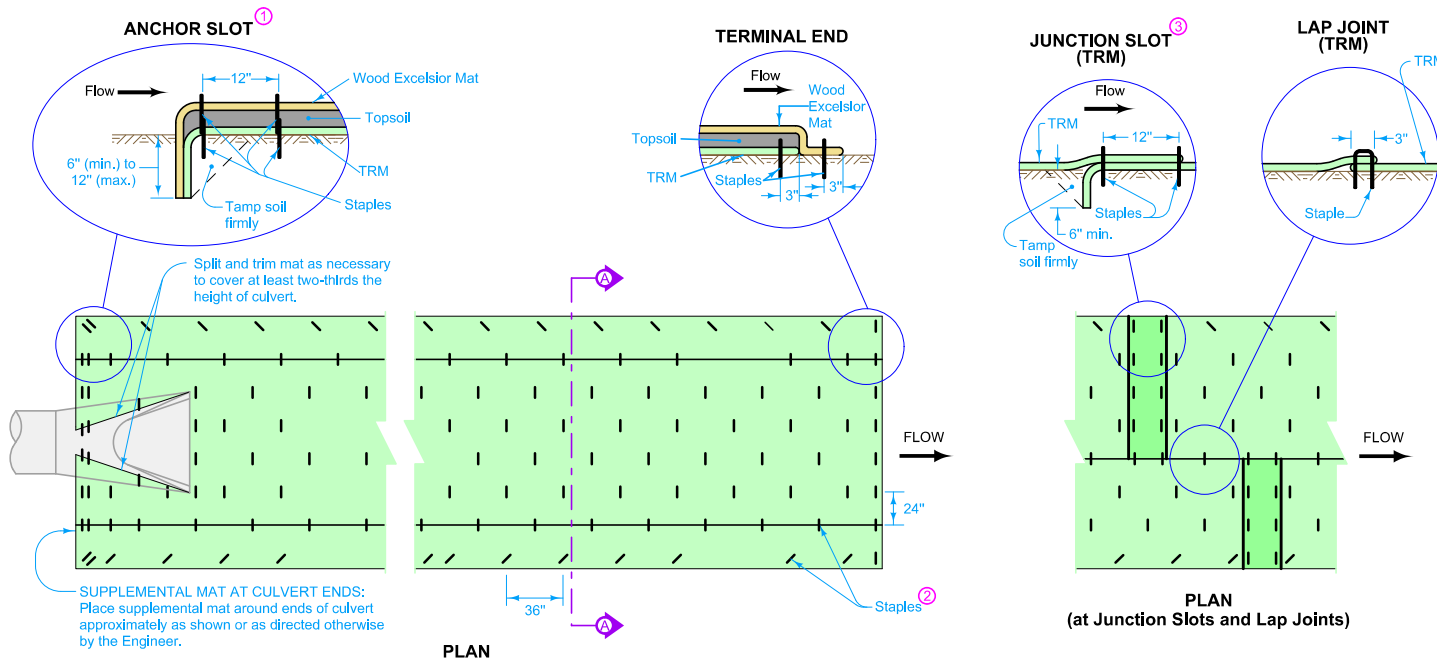
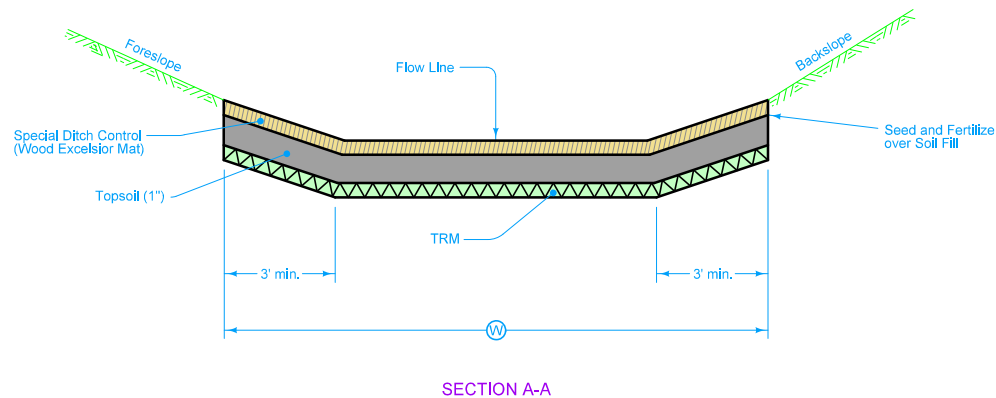


Refer to [EC-101](#) for Special Ditch Control (Wood Excelsior Mat).



- ① Install anchor slot at the beginning (upstream end) of all mat installations.
- ② Place staples alternately in rows approximately 24 inches apart. Approximately 30 staples required per square (100 sq. ft.) of each type of mat.
- ③ Stagger Junction Slots.

**SUPPLEMENTAL MAT AT CULVERT ENDS:**  
Place supplemental mat around ends of culvert approximately as shown or as directed otherwise by the Engineer.



Possible Contract Items:  
Turf Reinforcement Mat

Possible Tabulation:  
100-22

	REVISION
	1   10-20-15
<b>STANDARD ROAD PLAN</b>	<b>EC-104</b>
REVISIONS: Changed Soil Fill to Topsoil.	SHEET 1 of 1
 APPROVED BY DESIGN METHODS ENGINEER	
<b>TURF REINFORCEMENT MAT (TRM)</b>	