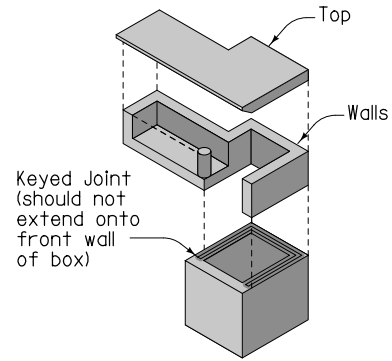


Extension unit may be used on either or both sides of intake. Details are similar when extension unit is on the opposite side. For joint details, refer to PV-101.

- ② Match gutter slope. Drain to well.
- ③ Other lengths of opening may be constructed by varying the length of the extension and the rebar.
- ④ Includes 2 inches for 'ED' Joints.



ISOMETRIC INTAKE WELL, WALLS AND TOP

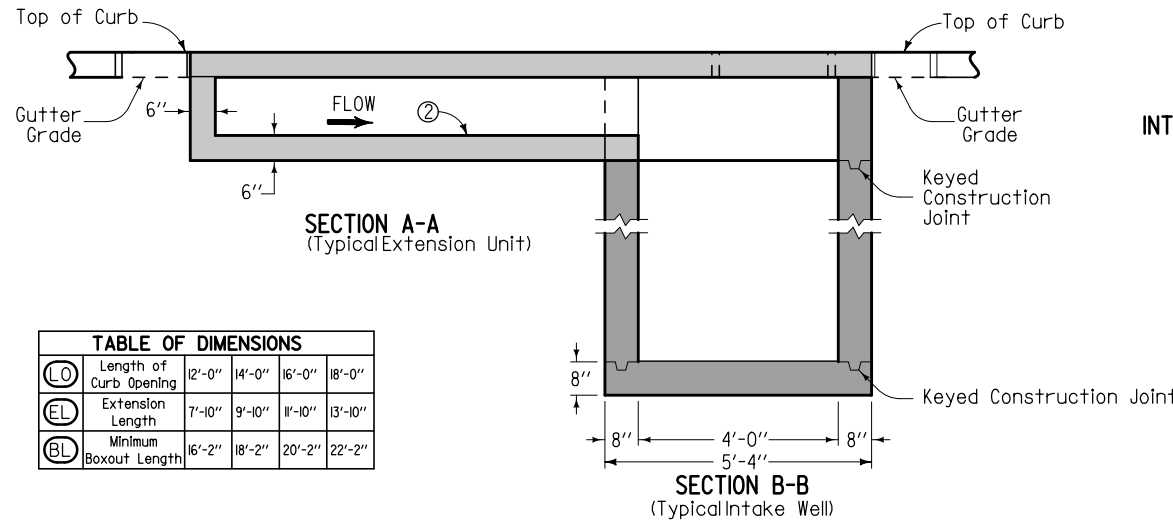
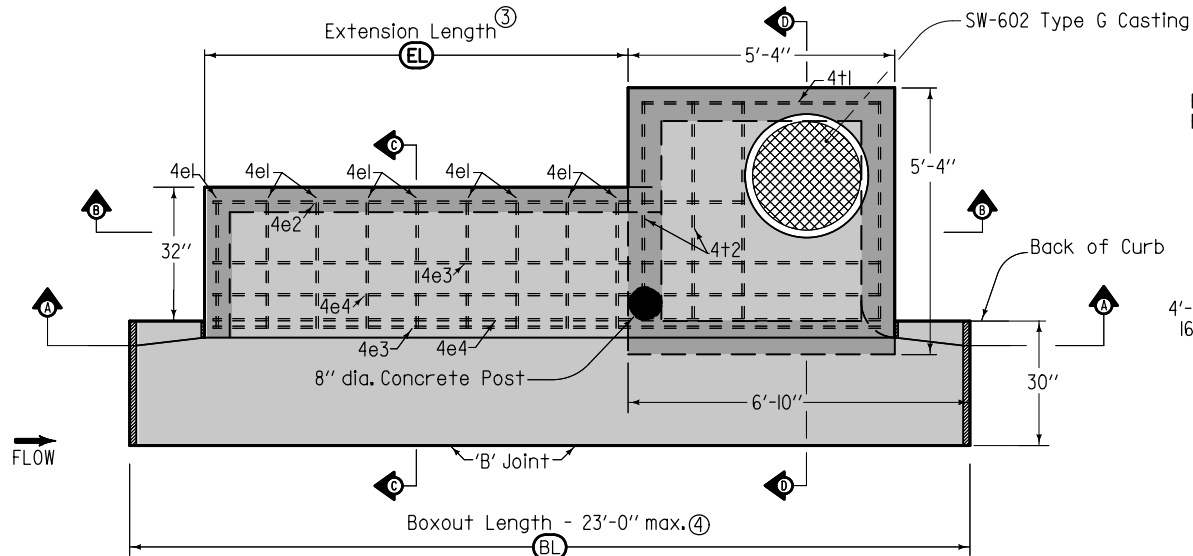


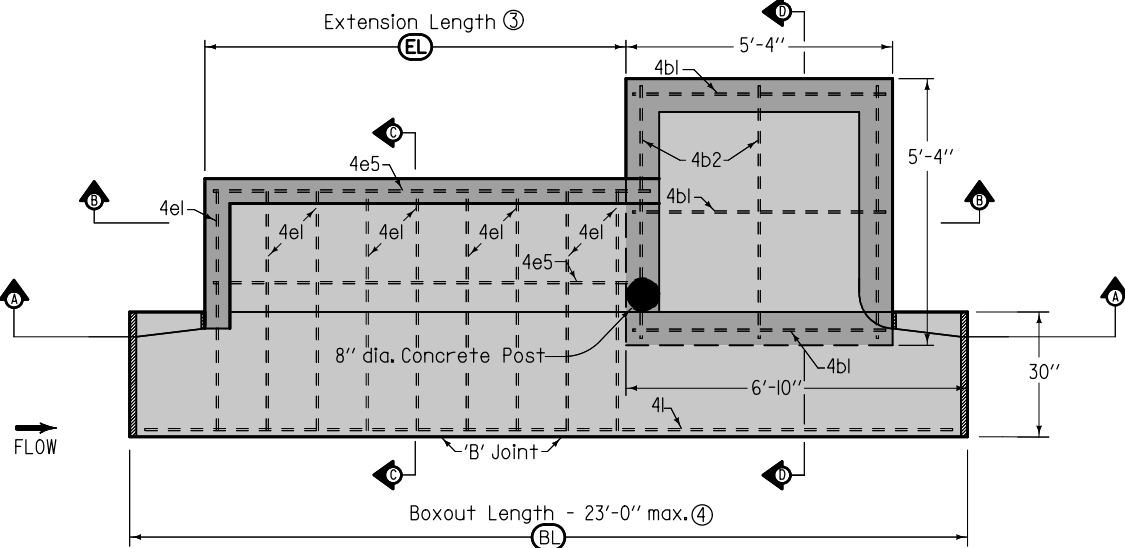
TABLE OF DIMENSIONS					
LO	Length of Curb Opening	12'-0"	14'-0"	16'-0"	18'-0"
EL	Extension Length	7'-10"	9'-10"	11'-10"	13'-10"
BL	Minimum Boxout Length	16'-2"	18'-2"	20'-2"	22'-2"

Possible Contract Items:
Intake, SW-545

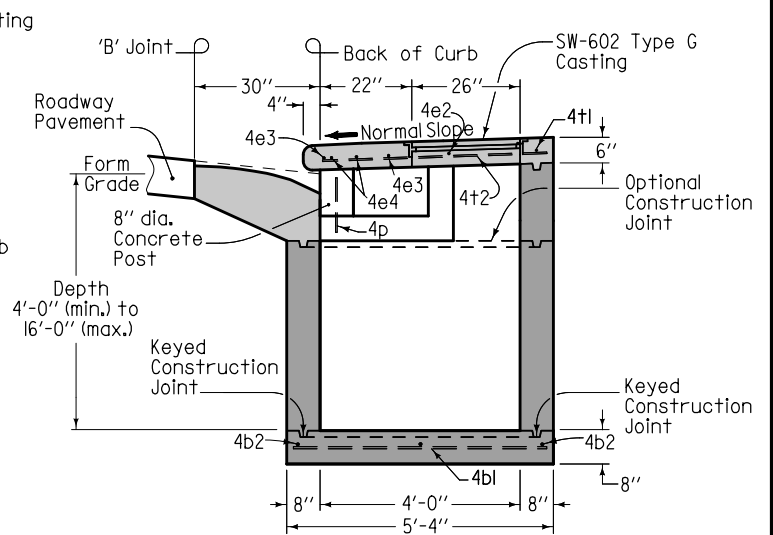
	REVISION
	3 10-18-11
STANDARD ROAD PLAN	SW-545
SHEET 1 of 3	
REVISIONS: Added "Type G" (casting) on sheets 1 and 2.	
<i>Deanna Mayfield</i> APPROVED BY DESIGN METHODS ENGINEER	
SINGLE OPEN-THROAT CURB INTAKE WITH EXTENDED OPENING	



PLAN
TOP REINFORCING PLACEMENT



PLAN
BOTTOM REINFORCING PLACEMENT

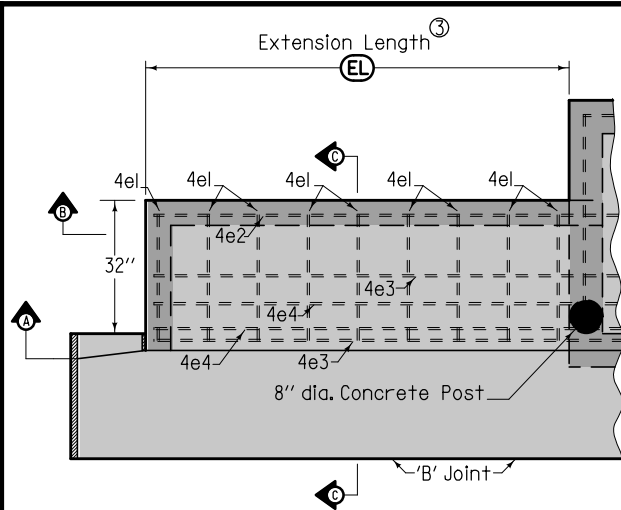


SECTION D-D

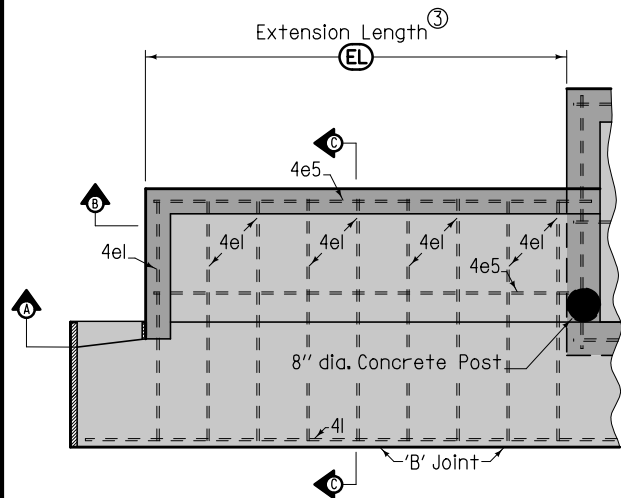
REINFORCING BAR LIST Intake Well					
MARK	LOCATION	NO.	LENGTH	WEIGHT	SPACING
4b1	Base	3	5'-0"	10.0	2'-4"
4b2	Base	3	5'-0"	10.0	2'-4"
4t1	Top	1	5'-0"	3.3	12"
4t2	Top	4	4'-6"	12.0	See Detail
4p	Post	1	13"	0.7	
Total				36 lbs.	

- ③ Other lengths of opening may be constructed by varying the length of the extension and the rebars.
- ④ Includes 2 inches for 'ED' Joints.

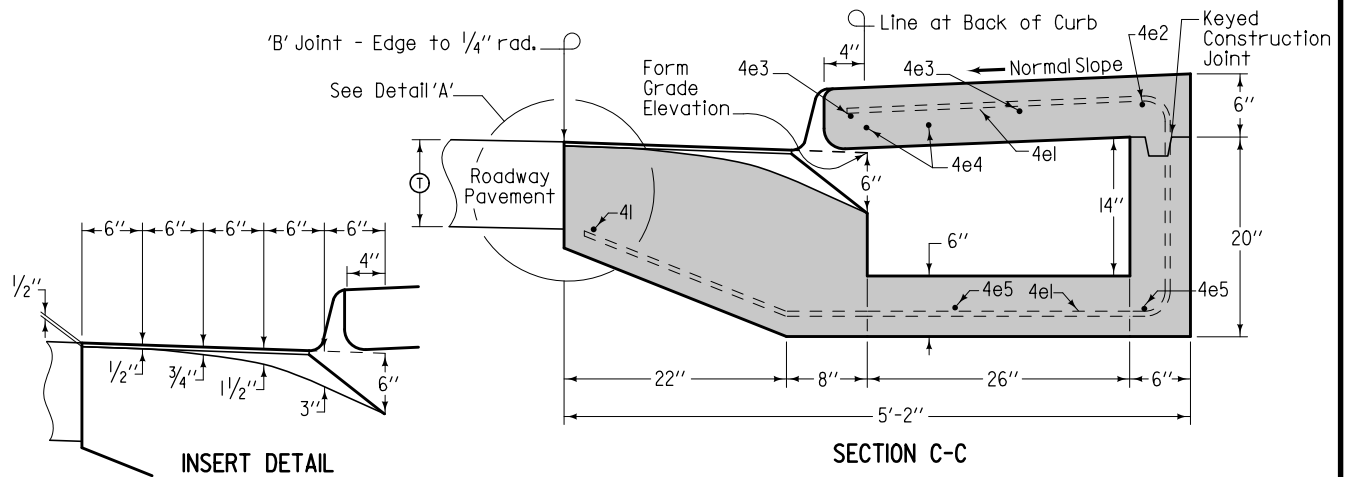
<p>Iowa Department of Transportation</p>	REVISION	
	3	10-18-11
STANDARD ROAD PLAN	SW-545	
REVISIONS: Added *Type G* (casting) on sheets 1 and 2.	SHEET 2 of 3	
<p>Deanna Marfield APPROVED BY DESIGN METHODS ENGINEER</p>		
<p>SINGLE OPEN-THROAT CURB INTAKE WITH EXTENDED OPENING</p>		



PLAN
TOP OF EXTENSION REINFORCING PLACEMENT



PLAN
BOTTOM OF EXTENSION REINFORCING PLACEMENT



INSERT DETAIL

SECTION C-C

REINFORCING BAR LIST (LO) = 12'-0"

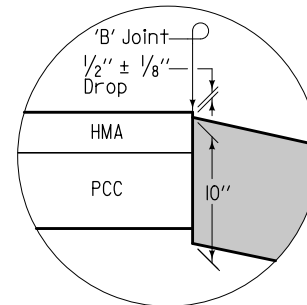
MARK	SIZE	LOCATION	NO.	LENGTH	MASS	SPACING
4e1	4	Top/Base	9	9'-5 1/2"	56.9	12"
4e2	4	Top	1	10'-0"	6.7	
4e3	4	Top	2	12'-9"	17.0	15 1/2"
4e4	4	Top	2	12'-9"	17.0	6"
4e5	4	Base	2	8'-2"	10.9	22"
4I*	4	Insert	1	15'-10"	10.6	
* With 16'-6" Boxout.				Total	119.1 lbs.	

REINFORCING BAR LIST (LO) = 14'-0"

MARK	SIZE	LOCATION	NO.	LENGTH	MASS	SPACING
4e1	4	Top/Base	11	9'-5 1/2"	69.5	12"
4e2	4	Top	1	12'-0"	8.0	
4e3	4	Top	2	14'-9"	19.7	15 1/2"
4e4	4	Top	2	14'-9"	19.7	6"
4e5	4	Base	2	10'-2"	13.6	22"
4I*	4	Insert	1	17'-10"	11.9	
* With 18'-6" Boxout.				Total	142.4 lbs.	

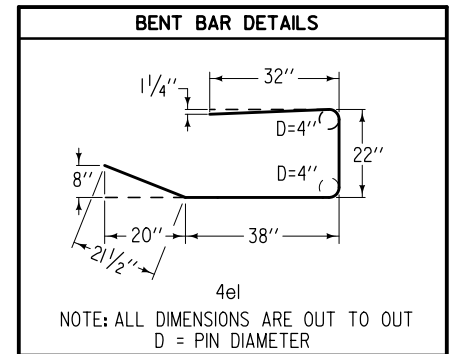
REINFORCING BAR LIST (LO) = 16'-0"

MARK	SIZE	LOCATION	NO.	LENGTH	MASS	SPACING
4e1	4	Top/Base	13	9'-5 1/2"	82.1	12"
4e2	4	Top	1	14'-0"	9.3	
4e3	4	Top	2	16'-9"	22.4	15 1/2"
4e4	4	Top	2	16'-9"	22.4	6"
4e5	4	Base	2	12'-2"	16.2	22"
4I*	4	Insert	1	19'-10"	13.2	
* With 20'-6" Boxout.				Total	165.6 lbs.	



DETAIL 'A'

Use when adjacent pavement is HMA or composite.



NOTE: ALL DIMENSIONS ARE OUT TO OUT
D = PIN DIAMETER

③ Other lengths of opening may be constructed by varying the length of the extension and the rebars.

<p>Iowa Department of Transportation</p> <p>STANDARD ROAD PLAN</p> <p>REVISIONS: Added "Type G" (casing) on sheets 1 and 2.</p> <p><i>Deanna Mayfield</i> APPROVED BY DESIGN METHODS ENGINEER</p> <p>SINGLE OPEN-THROAT CURB INTAKE WITH EXTENDED OPENING</p>	<p>REVISION</p> <p>3 10-18-11</p>
	<p>SW-545</p> <p>SHEET 3 of 3</p>