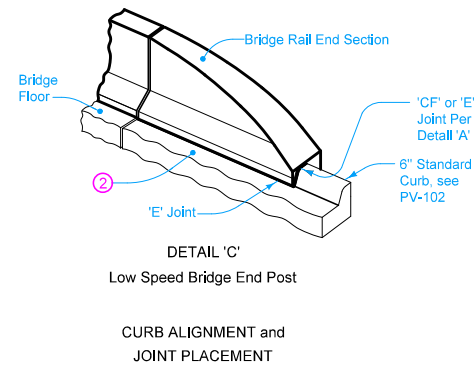
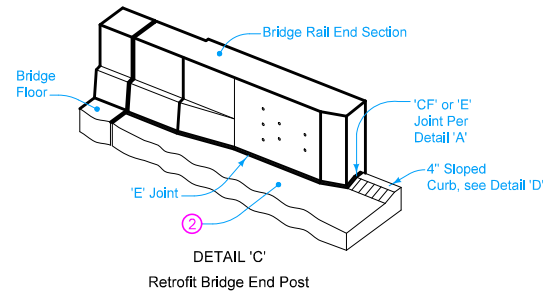
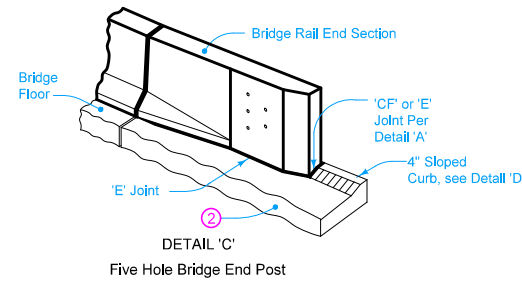
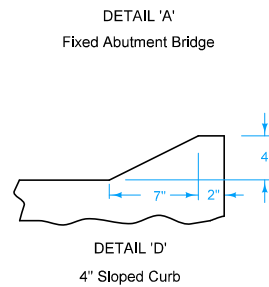
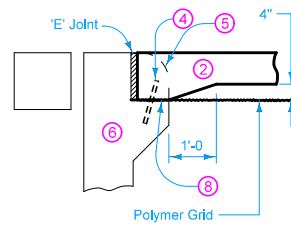
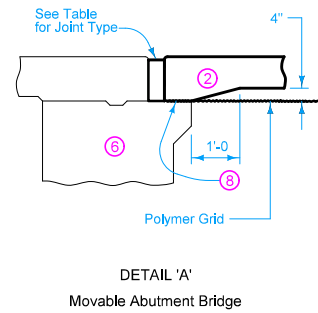
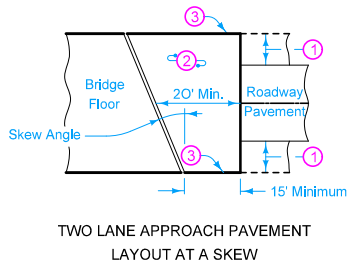
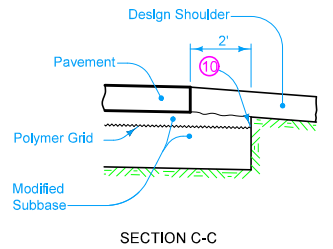
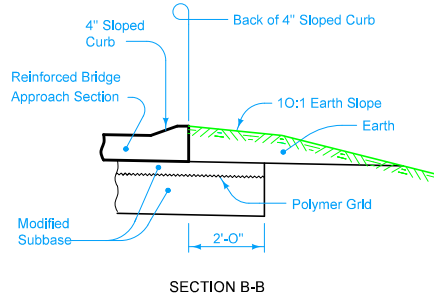
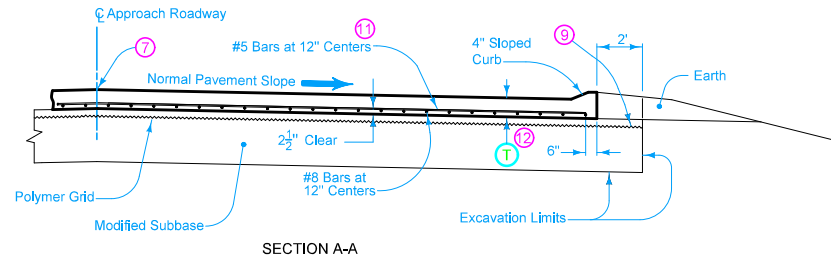


Sections and details apply to Standard Road Plans RK-16 and RK-19B through RK-19J.

- ① Design Shoulder width.
- ② Reinforced Bridge Approach Section.
- ③ Build curb. See Detail C.
- ④ Reinforcing Bar.
- ⑤ Temporary paving block removed by paving contractor.
- ⑥ Bridge Abutment.
- ⑦ Longitudinal Joint: (PV-101)
Single pour - Saw cut joint per Detail B.
Two pours - Use 'KS-1' joint.
- ⑧ Secure polymer grid on top of paving notch.
- ⑨ Extend polymer grid to 2' outside edge of pavement.
- ⑩ Trim fabric to edge of excavation.
- ⑪ If bridge is skewed, place additional #5 bar parallel to skewed face.
- ⑫ T = 10 inches.



JOINT TYPE FOR MOVABLE ABUTMENT BRIDGES		
Joint	Concrete Beam Maximum Bridge Length	Steel Girder Maximum Bridge Length
CF-1	370'	250'
CF-2	465'	320'
CF-3	575'	400'

Possible Contract Item:
Bridge Approach, RK-19

Possible Tabulation:
112-6

	REVISION
	20 10-21-14
	STANDARD ROAD PLAN RK-19A
SHEET 1 of 1	
REVISIONS: Changed label from Bridge End Post to Bridge Rail End Section.	

APPROVED BY DESIGN METHODS ENGINEER

Brian Smith

BRIDGE APPROACH SECTION (GENERAL DETAILS)