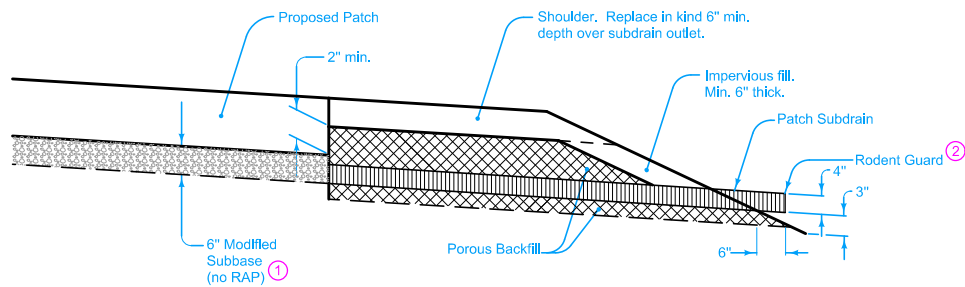


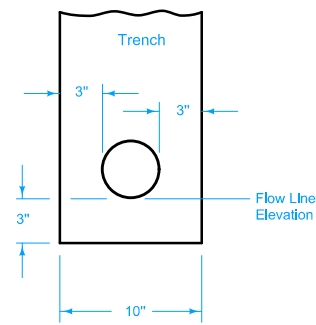
MODIFIED SUBBASE AND SUBDRAIN

IF LONGITUDINAL SUBDRAIN IS PRESENT OR IS TO BE PLACED



MODIFIED SUBBASE AND SUBDRAIN

WITHOUT LONGITUDINAL SUBDRAIN



DRAIN PLACEMENT

- ① 6 inches Modified Subbase (no RAP) if required by plan. When placed, extend Modified Subbase (no RAP) over longitudinal subdrain, if present.
- ② If longitudinal subdrain (shoulder) is not to be placed or if it is not present on side of roadway to be patched, then place Patch Subdrain at low end(s) of patch. Use removable grate rodent guard except for projects using recycled PCC subbase where a removable fork rodent guard is required. Refer to RF-19E for rodent guard details. Refer to Drain Placement detail.

Possible Contract Items:
Subbase (Patches)
Patch Subdrain

Possible Tabulation:
102-6C

IOWA DOT	REVISION	
	New	10-21-14
STANDARD ROAD PLAN	PR-140	
		SHEET 1 of 1

REVISIONS: New. Replaces RR-26.

Brian Smith
APPROVED BY DESIGN METHODS ENGINEER

SUBBASE PATCHES