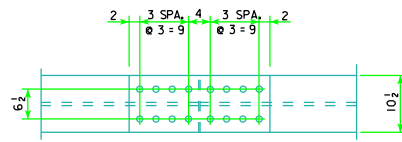
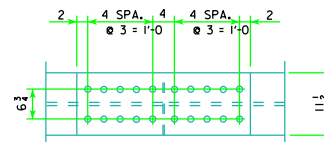


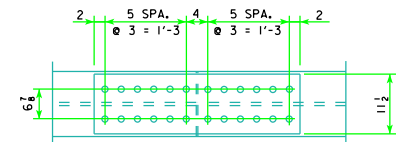
TOP AND BOTTOM FLANGE



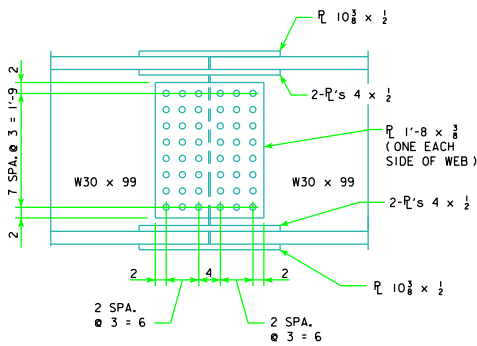
TOP AND BOTTOM FLANGE



TOP AND BOTTOM FLANGE



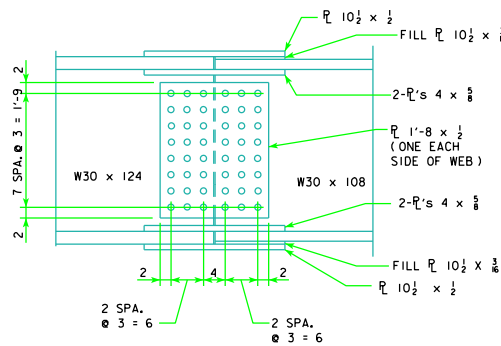
TOP AND BOTTOM FLANGE



BOLTED SPLICE DETAILS

160' BEAM SPLICE

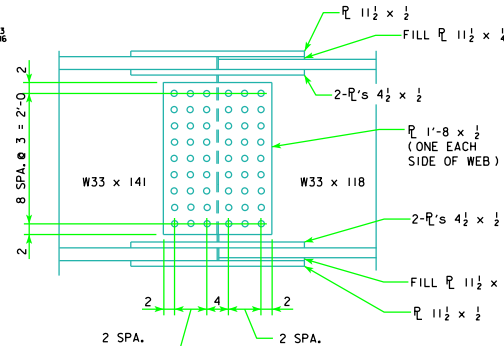
NOTE: ALL BOLTS $\frac{7}{8}$ "- ϕ



BOLTED SPLICE DETAILS

180' BEAM SPLICE

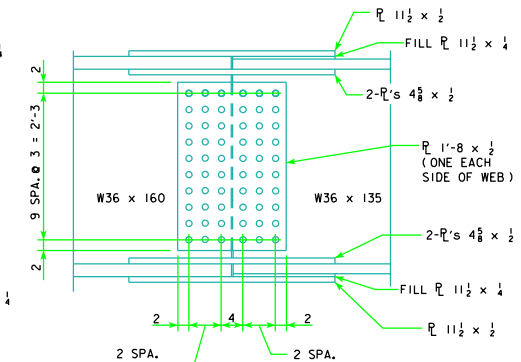
NOTE: ALL BOLTS $\frac{7}{8}$ "- ϕ



BOLTED SPLICE DETAILS

200' BEAM SPLICE

NOTE: ALL BOLTS $\frac{7}{8}$ "- ϕ



BOLTED SPLICE DETAILS

220' BEAM SPLICE

NOTE: ALL BOLTS $\frac{7}{8}$ "- ϕ

LATEST REVISION DATE <i>Thomas E. Mc Donald</i> APPROVED BY BRIDGE ENGINEER		
	STANDARD DESIGN - 40' ROADWAY, 3 SPAN BRIDGES ROLLED STEEL BEAM BRIDGES JUNE, 2010	
	BOLTED FIELD SPLICE DETAILS SHEET 1	RS40-084-10