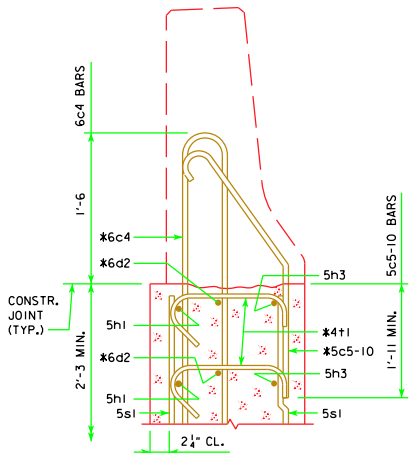


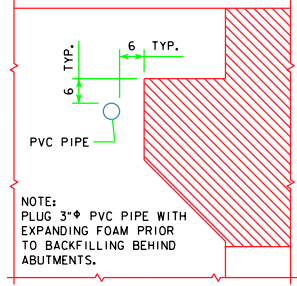
NOTE:
PLUG 3" PVC PIPE WITH
EXPANDING FOAM PRIOR
TO BACKFILLING BEHIND
ABUTMENTS.



SECTION B-B

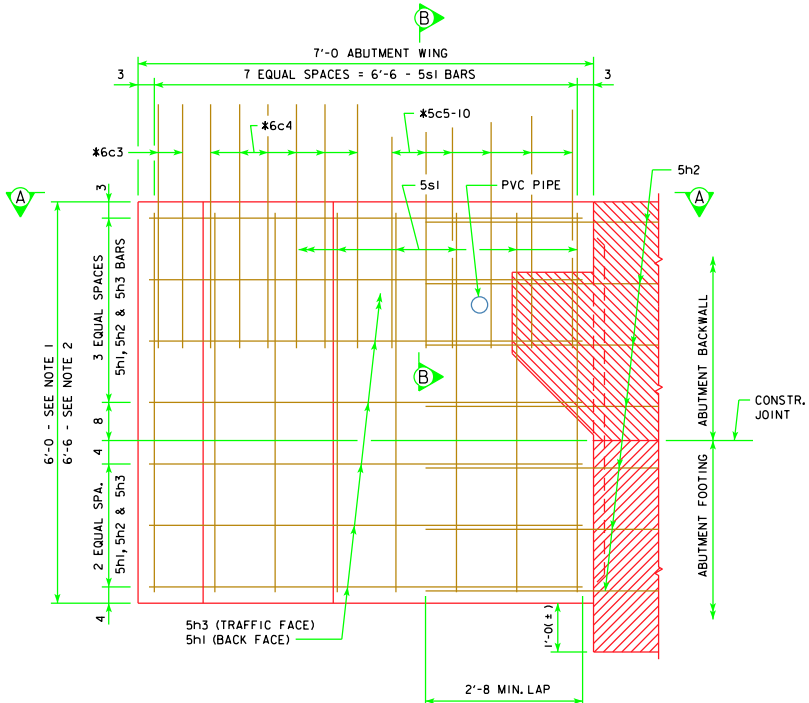
* BARRIER RAIL END SECTION
BARS TO BE PLACED WITH
ABUTMENT WING.

SEE END SECTION DETAILS ON
SHEET RS40-089-10 FOR DETAILS
OF BARRIER RAIL END SECTION.
REINFORCING BARS 6c3, 6c4,
5c5-10, 6d2 & 4+1 ARE
INCLUDED IN THE
SUPERSTRUCTURE QUANTITIES.



NOTE:
PLUG 3" PVC PIPE WITH
EXPANDING FOAM PRIOR
TO BACKFILLING BEHIND
ABUTMENTS.


PVC PIPE LOCATION



ABUTMENT WING - ELEVATION VIEW

NOTE:

1. USE FOR BRIDGES 160'-0 THRU 200'-0.
2. USE FOR BRIDGES 220'-0 THRU 320'-0.
3. REINFORCING STEEL QUANTITY AND CONCRETE QUANTITY ARE INCLUDED IN THE SUPERSTRUCTURE QUANTITIES SHOWN ELSEWHERE IN THESE PLANS.

LATEST REVISION DATE APPROVED BY BRIDGE ENGINEER <i>Mark E. McDonald</i>	 Iowa Department of Transportation Highway Division
	STANDARD DESIGN - 40' ROADWAY, 3 SPAN BRIDGES ROLLED STEEL BEAM BRIDGES JUNE, 2010
	ABUTMENT WING DETAILS BRIDGES 160'-0 - 320'-0