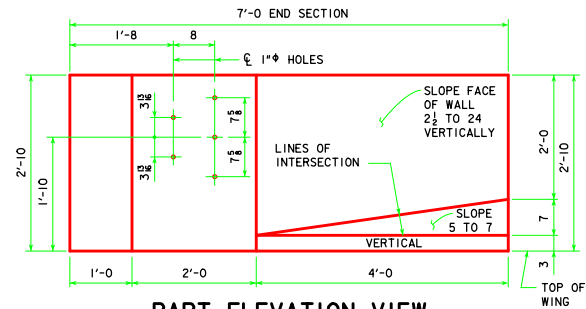
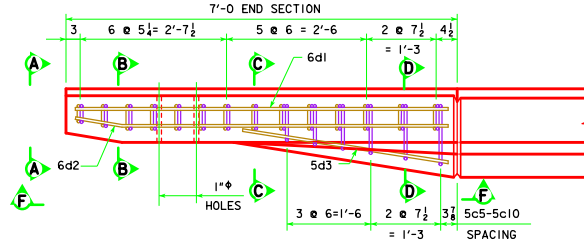


PART PLAN VIEW

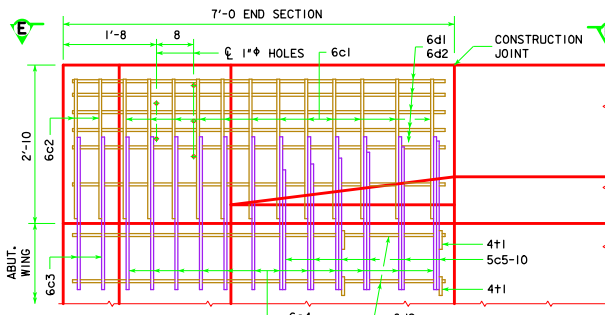


PART ELEVATION VIEW

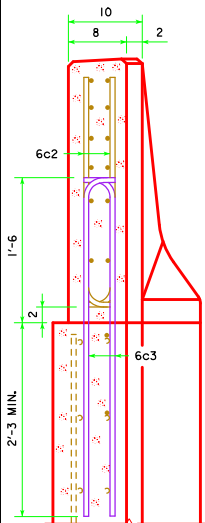
PROVIDE 5 HOLES FORMED WITH 1" PLASTIC CONDUIT. COST TO BE INCLUDED IN PRICE BID FOR CONCRETE BARRIER RAILING.



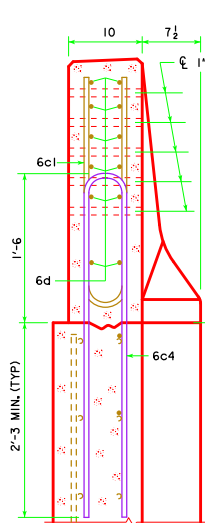
PART VIEW E-E



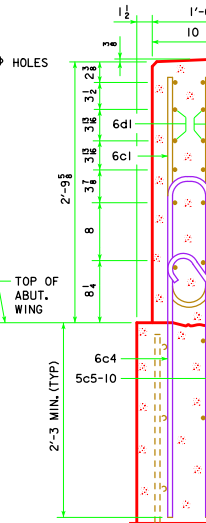
PART VIEW F-F



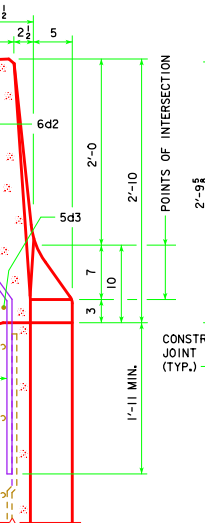
VIEW A-A



SECTION B-B



SECTION C-C



SECTION D-D

NOTE:  
4+1 PLACEMENT - 2 BARS EACH LEVEL OF 6d2 IN WING FOOTING.

NOTE:  
CONSTRUCTION JOINT BETWEEN TOP OF WING AND BARRIER RAIL IS ROUGHENED CONCRETE.

NOTE:  
THE 10" RADIUS AND 1/2" RADIUS ARE TYPICAL AND SHALL BE USED WHEN CONSTRUCTING THE CORNERS FOR VIEW A-A, SECTION B-B, SECTION C-C AND SECTION D-D.

NOTE:  
THE 6c4, 6c3, 5c5-10, 2 - 6d2 AND 4+1 BARS ARE TO BE PLACED WITH THE ABUTMENT WING. THE DETAILS FOR PLACEMENT ARE SHOWN ON THE WING ABUTMENT SHEET.

NOTE:  
DASHED LINES BELOW THE TOP OF WING ARE THE ABUTMENT WING REINFORCING STEEL. SEE WING ABUTMENT SHEET FOR PLACEMENT.

EPOXY COATED REINF. STEEL - ONE END SECT.

BAR	LOCATION	SHAPE	NO.	LENGTH	WEIGHT
6c1	RAIL, VERTICAL	□	12	5'-6"	99
6c2	RAIL, VERTICAL	□	4	2'-10"	17
6d1	RAIL, HORIZONTAL	—	6	6'-8"	60
6d2	RAIL, HORIZONTAL	—	8	6'-9"	81
5d3	RAIL, HORIZONTAL	—	1	3'-9"	4
4+1	RAIL, ABUTMENT WING TIE BARS	—	4	VARIES	5
EPOXY REINF. TOTAL WEIGHT (LBS.)					266

STAINLESS STEEL REINF. STEEL - ONE END SECT.

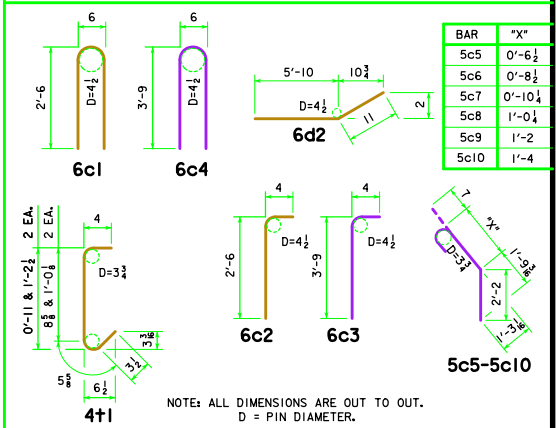
BAR	LOCATION	SHAPE	NO.	LENGTH	WEIGHT
6c3	RAIL, VERTICAL	□	4	4'-1"	25
6c4	RAIL, VERTICAL	□	12	8'-0"	144
5c5-10	RAIL, VERTICAL	□	6	VARIES	23
STAINLESS STEEL TOTAL WEIGHT (LBS.)					192

NOTE: REINFORCING STEEL QUANTITIES ARE INCLUDED ON THE SUMMARY QUANTITIES SHEET.

CONCRETE PLACEMENT SUMMARY

SECTION	TOTAL
BARRIER RAIL ONE END SECTION	0.65 CU. YD.

BENT BAR DETAILS



LATEST REVISION DATE

APPROVED BY BRIDGE ENGINEER

**IOWADOT** Highway Division

STANDARD DESIGN - 40' ROADWAY, 3 SPAN BRIDGES

**CONTINUOUS CONCRETE SLAB BRIDGES**

JULY, 2014

BARRIER RAIL END SECTION

J40-47-14