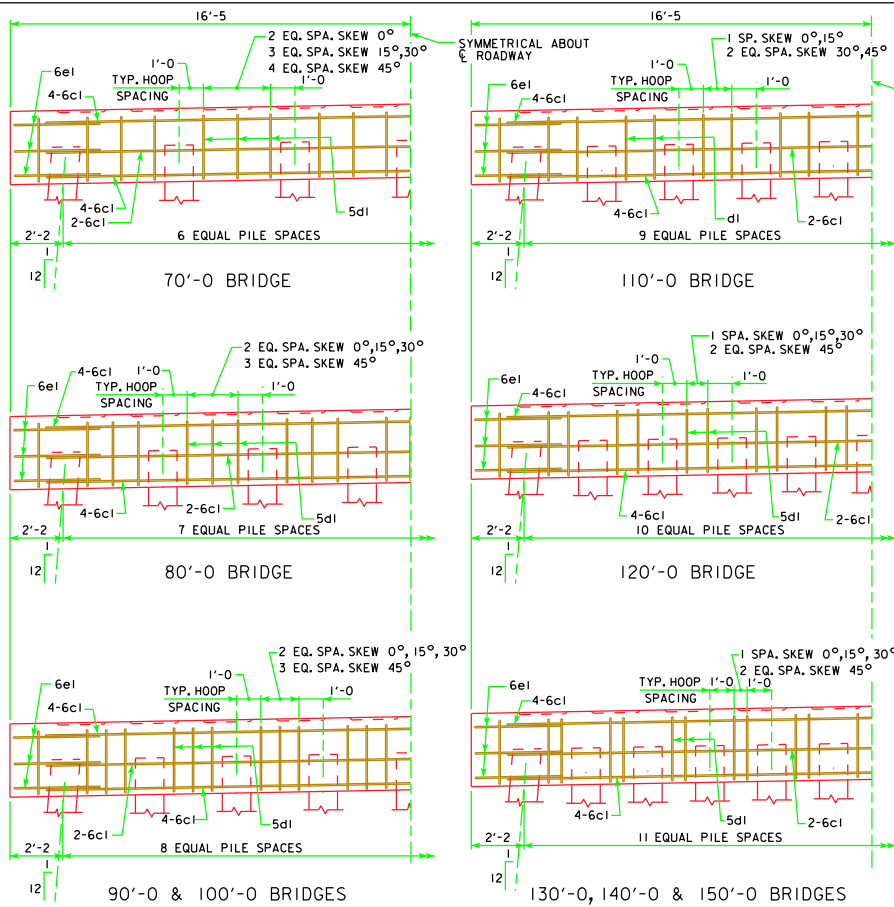
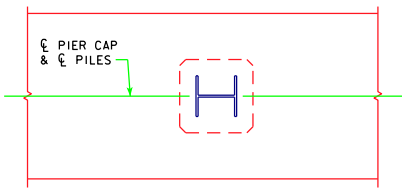


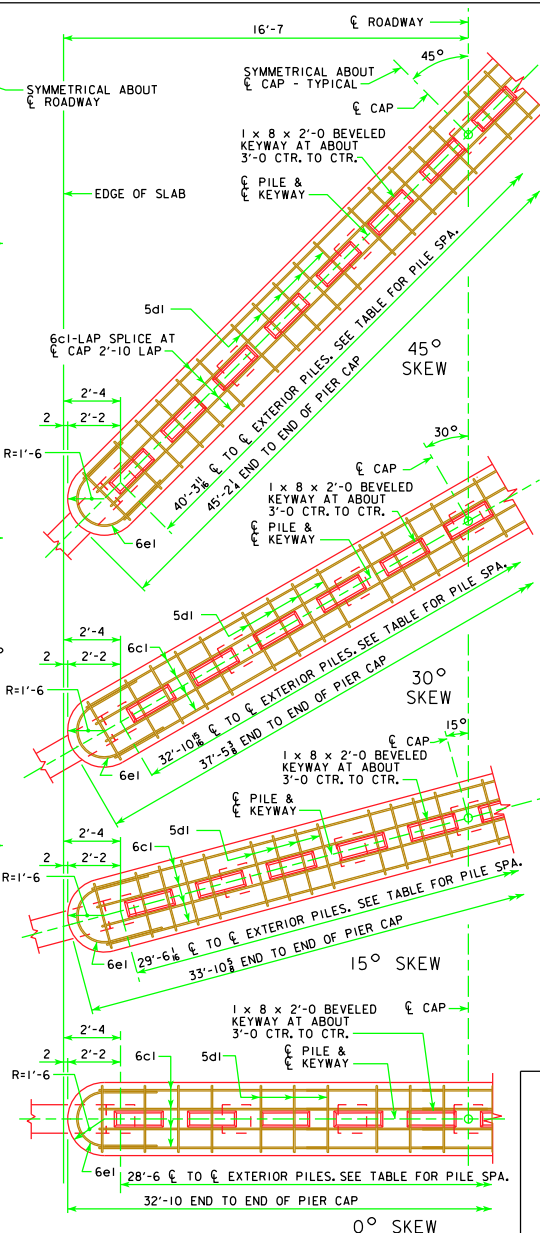
REVISED 12-08 - REVISED PILES REQUIRED FOR 90'-0 BRIDGE. ADDED PILE ORIENTATION DETAIL. EXTRA 5d1 BAR ADDED AT PIER CAP END.



TYP. HALF ELEVATION PIER CAP
(LOOKING PARALLEL TO ϵ ROADWAY)



PILE ORIENTATION DETAIL FOR
TYPE 3 TRESTLE BENT PILES



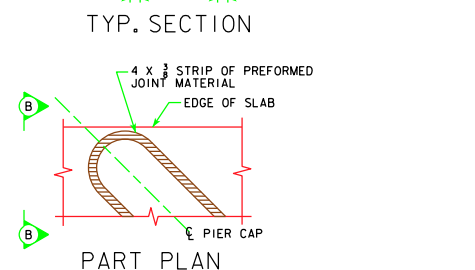
TYP. HALF PLAN VIEW

NOTE: NUMBER OF PILES AND STIRRUPS SHOWN ARE FOR A 70'-0 BRIDGE. CAP DIMENSIONS ARE TYPICAL FOR ALL BRIDGES.

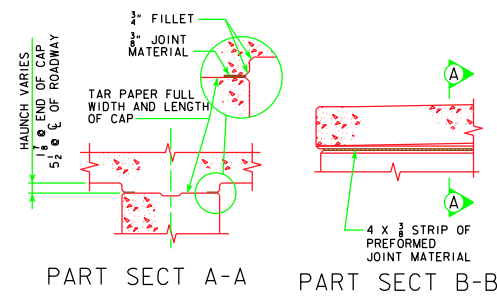
TYP. SECTION

GRADE TO BOTTOM OF CAP - SEE TABLE
3'-0
1'-6
1'-6
5dl
6cl
1'-6
TOP OF PILE
3 3/8
2'-5 3/8
3 3/8

GRADE TO BOTTOM OF CAP DIMENSION	
70'-0 BRIDGE	4'-8
80'-0 BRIDGE	4'-8 1/2
90'-0 BRIDGE	4'-9 1/2
100'-0 BRIDGE	4'-11
110'-0 BRIDGE	5'-0
120'-0 BRIDGE	5'-1 1/2
130'-0 BRIDGE	5'-2 1/2
140'-0 BRIDGE	5'-4
150'-0 BRIDGE	5'-5 1/2



SHOWING TREATMENT OF 4 x 3/8 STRIP OF PREFORMED JOINT MATERIAL AT ENDS OF PIER CAP. NOTE THAT JOINT MATERIAL IS TO GO ALL THE WAY AROUND PIER CAP FOR SQUARE AND SKEWED BRIDGES.



LATEST REVISION DATE	 IOWA Department of Transportation Highway Division	STANDARD DESIGN - 30' ROADWAY, 3 SPAN BRIDGES	
		CONTINUOUS CONCRETE SLAB BRIDGES	
		NOVEMBER, 2006	
APPROVED BY BRIDGE ENGINEER THOMAS C. MCQUINN	NON-MONOLITHIC PIER CAP DETAILS ALL BRIDGES	J30-25-06	
		SHEET 1 OF 2	