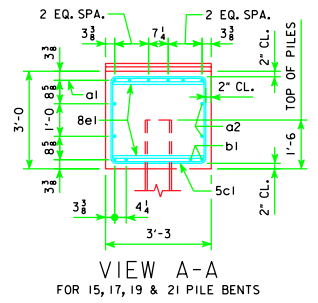
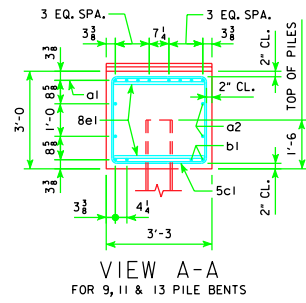
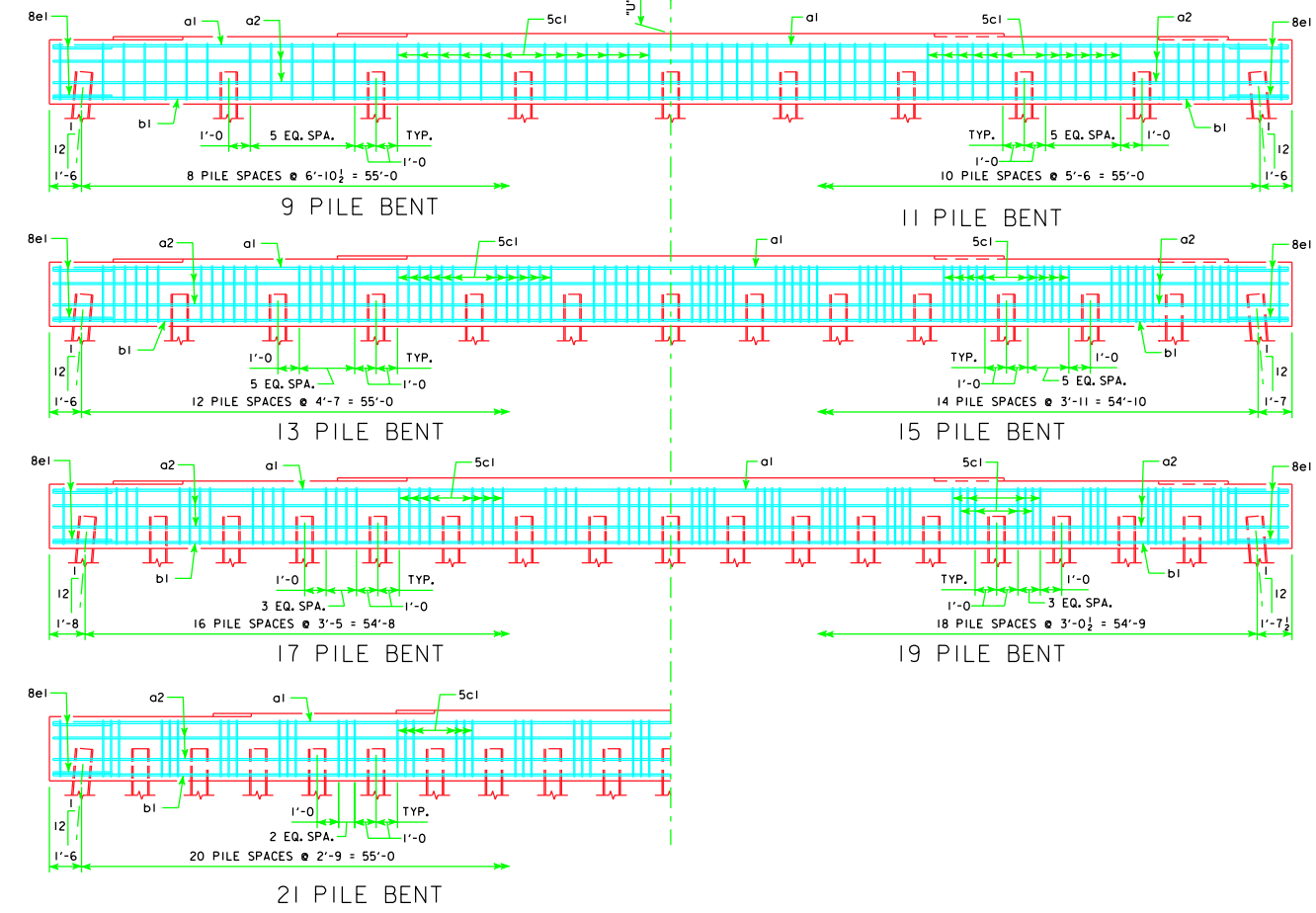


KEYED NOTCH DETAIL

NOTE:
THE HEIGHT OF THE STEPS ON THE BRIDGE SEAT IS EQUAL TO THE DIFFERENCE IN ELEVATIONS OF THE TOP OF SLAB AT ADJACENT BEAMS ALONG CL PIER.
SEE SHEET H40-29-06 FOR "U" DIMENSION.

TYPICAL PLAN

SYMMETRICAL ABOUT CL PIER EXCEPT STEPS
GRADE ELEV. @ CL PIER



REVISED 10-09 - SHEET WAS REVISED TO MEET LRFD SPECIFICATIONS.

10-09 LATEST REVISION DATE <i>Mark C. McDaniel</i> APPROVED BY BRIDGE ENGINEER		
	STANDARD DESIGN - 40' ROADWAY, THREE SPAN BRIDGE PRETENSIONED PRESTRESSED CONCRETE BEAM BRIDGES AUGUST, 2009	
PILE BENT PIERS		H40-54-06 45° SKEW