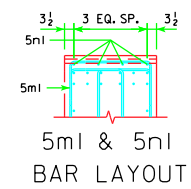
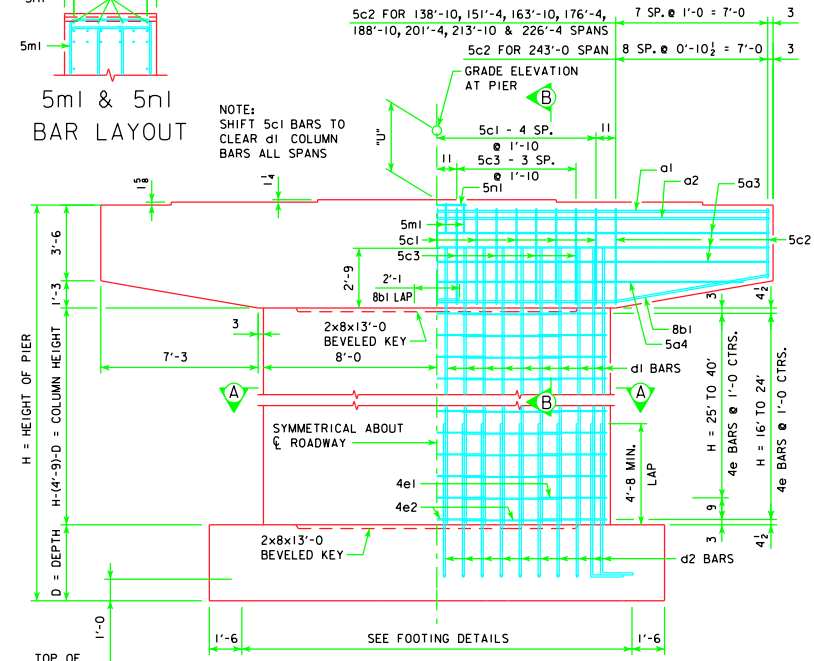


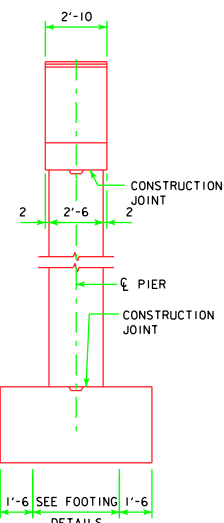
CAP PLAN
NOTE: FOR SIZE OF BEARING PADS SEE H30-44-06.



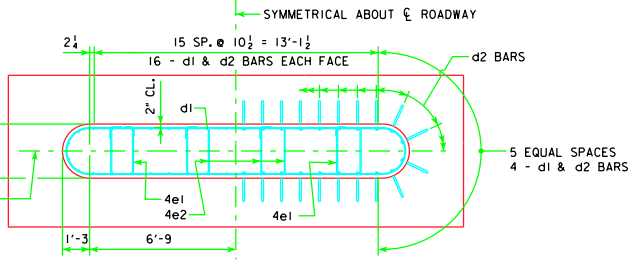
5ml & 5n1
BAR LAYOUT



FRONT ELEVATION



END ELEVATION



SECTION A-A

PIER NOTES:

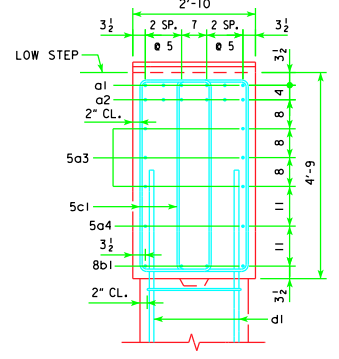
SEE "TEE PIER NOTES" ON H30-02-06 FOR NOTES REGARDING APPLICATION OF THESE PIER STANDARDS.

MINIMUM CLEAR DISTANCE FROM FACE OF CONCRETE TO NEAR REINFORCING BAR SHALL BE 2 INCHES UNLESS OTHERWISE NOTED OR SHOWN.

ELIMINATE 2x8 BEVELED KEYWAY ON TOP OF CAP FOR EXPANSION PIERS.

SEE SHEET H30-09-06 FOR "U" DIMENSION.

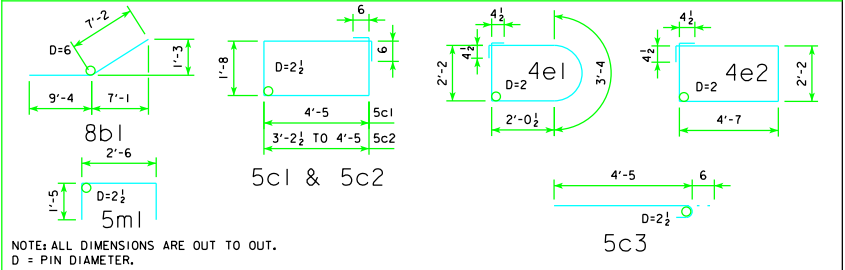
		CAP																							
		138'-10		151'-4		163'-10		176'-4		188'-10		201'-4		213'-10		226'-4		243'-0							
REINFORCING STEEL	BAR LENGTH	SHAPE	NO.		SIZE		WEIGHT		NO.		SIZE		WEIGHT		NO.		SIZE		WEIGHT						
			a1	30'-8	6	7	376	6	7	376	6	7	376	6	8	491	6	8	491	6	8	491	6	9	626
a2	30'-8	6	7	376	6	7	376	6	7	376	6	7	376	6	8	491	6	8	491	6	8	491	6	8	491
5o3	30'-8	6	5	192	6	5	192	6	5	192	6	5	192	6	5	192	6	5	192	6	5	192	6	5	192
5o4	28'-3	2	5	59	2	5	59	2	5	59	2	5	59	2	5	59	2	5	59	2	5	59	2	5	59
8b1	16'-6	8	8	352	8	8	352	8	8	352	8	8	352	8	8	352	8	8	352	8	8	352	8	8	352
5c1	13'-2	18	5	247	18	5	247	18	5	247	18	5	247	18	5	247	18	5	247	18	5	247	18	5	247
5c2	VARIES	32	5	399	32	5	399	32	5	399	32	5	399	32	5	399	32	5	399	32	5	399	32	5	399
5c3	4'-11	16	5	82	16	5	82	16	5	82	16	5	82	16	5	82	16	5	82	16	5	82	16	5	82
5ml	5'-4	4	5	22	4	5	22	4	5	22	4	5	22	4	5	22	4	5	22	4	5	22	4	5	22
5n1	2'-8	4	5	11	4	5	11	4	5	11	4	5	11	4	5	11	4	5	11	4	5	11	4	5	11
TOTAL (LB.)				2116		2116		2116		2231		2231		2346		2346		2481		2481		2531		2531	
STRUCTURAL CONCRETE (CY)				15.0		15.0		15.0		15.0		15.0		15.0		15.0		15.0		15.0		15.0		15.0	



SECTION B-B

		COLUMN																		
		138'-10		151'-4		163'-10		176'-4		188'-10		201'-4		213'-10		226'-4		243'-0		
H IN FEET	COLUMN HEIGHT	STRUCTURAL CONCRETE (CY)	NO.		SIZE		LENGTH		WEIGHT		NO.		SIZE		LENGTH		WEIGHT		TOTAL WEIGHT (LB.)	
			16	7'-9	11.1	40	9	10'-6	1428	16	4	10'-4	110	24	4	14'-3	228	1766		
17	8'-9	12.5	40	9	11'-6	1564	18	4	10'-4	124	27	4	14'-3	257	1945					
18	9'-9	14.0	40	9	12'-6	1700	20	4	10'-4	138	30	4	14'-3	286	2124					
19	10'-9	15.4	40	9	13'-6	1836	22	4	10'-4	152	33	4	14'-3	314	2302					
20	11'-9	16.8	40	9	14'-6	1972	24	4	10'-4	166	36	4	14'-3	343	2481					
21	12'-9	18.3	40	9	15'-6	2108	26	4	10'-4	179	39	4	14'-3	371	2658					
22	13'-9	19.7	40	9	16'-6	2244	28	4	10'-4	193	42	4	14'-3	400	2837					
23	14'-9	21.1	40	9	17'-6	2380	30	4	10'-4	207	45	4	14'-3	428	3015					
24	15'-9	22.6	40	9	18'-6	2516	32	4	10'-4	221	48	4	14'-3	457	3194					
25	16'-9	23.3	40	9	19'-6	2584	34	4	10'-4	235	51	4	14'-3	485	3304					
26	17'-9	24.7	40	9	20'-6	2720	36	4	10'-4	248	54	4	14'-3	514	3482					
27	18'-9	26.1	40	9	21'-6	2856	38	4	10'-4	262	57	4	14'-3	543	3661					
28	19'-9	27.6	40	9	22'-6	2992	40	4	10'-4	276	60	4	14'-3	571	3839					
29	20'-9	29.0	40	9	23'-6	3128	42	4	10'-4	290	63	4	14'-3	600	4018					
30	21'-9	30.4	40	9	24'-6	3264	44	4	10'-4	304	66	4	14'-3	628	4196					
31	22'-9	31.9	40	9	25'-6	3400	46	4	10'-4	318	69	4	14'-3	657	4375					
32	23'-9	33.3	40	9	26'-6	3536	48	4	10'-4	331	72	4	14'-3	685	4552					
33	24'-9	34.7	40	9	27'-6	3672	50	4	10'-4	345	75	4	14'-3	714	4731					
34	25'-9	36.2	40	9	28'-6	3808	52	4	10'-4	359	78	4	14'-3	742	4909					
35	26'-9	37.6	40	9	29'-6	3944	54	4	10'-4	373	81	4	14'-3	771	5088					
36	27'-9	39.0	40	9	30'-6	4080	56	4	10'-4	387	84	4	14'-3	800	5267					
37	28'-9	40.4	40	9	31'-6	4216	58	4	10'-4	400	87	4	14'-3	828	5444					
38	29'-9	41.9	40	9	32'-6	4352	60	4	10'-4	414	90	4	14'-3	857	5623					
39	30'-9	43.3	40	9	33'-6	4488	62	4	10'-4	428	93	4	14'-3	885	5801					
40	31'-9	44.7	40	9	34'-6	4624	64	4	10'-4	442	96	4	14'-3	914	5980					

BENT BAR DETAILS



Iowa Department of Transportation
Highway Division

STANDARD DESIGN - 30' ROADWAY, THREE SPAN BRIDGES
PRETENSIONED PRESTRESSED CONCRETE BEAM BRIDGES
DECEMBER, 2006

LATEST REVISION DATE
07-10
APPROVED BY BRIDGE ENGINEER
Thomas C. McQuinn

TEE PIER
CAP AND COLUMN
0° SKEW

H30-57-06