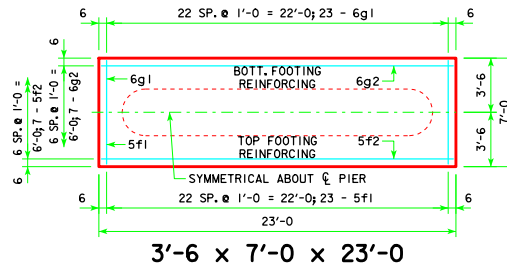
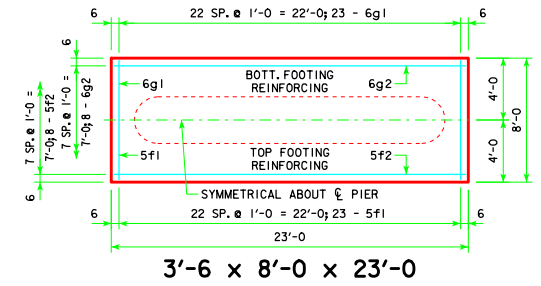


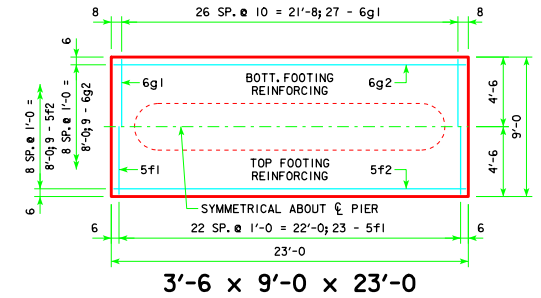
TYPICAL SECTION



3'-6 x 7'-0 x 23'-0

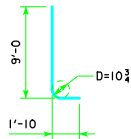


3'-6 x 8'-0 x 23'-0



3'-6 x 9'-0 x 23'-0

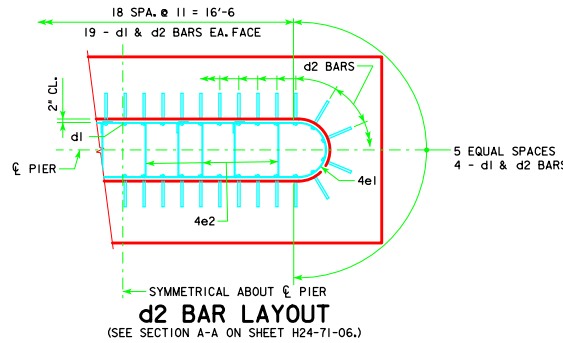
| H IN FT. | ABUT. BRG. | FOOTING SIZE |
|----------|------------|-----------------|
| 16 TO 18 | 138'-10 | 3'-6 x 7' x 23' |
| | 151'-4 | |
| | 163'-10 | |
| | 176'-4 | |
| | 188'-10 | |
| 19 TO 21 | 201'-4 | 3'-6 x 8' x 23' |
| | 213'-10 | |
| | 226'-4 | |
| | 243'-0 | |
| | 243'-0 | |
| 22 TO 24 | 138'-10 | 3'-6 x 7' x 23' |
| | 151'-4 | |
| | 163'-10 | |
| | 176'-4 | |
| | 188'-10 | |
| | 201'-4 | 3'-6 x 8' x 23' |
| | 213'-10 | |
| | 226'-4 | |
| | 243'-0 | |
| | 243'-0 | |



d2

NOTE: D = PIN DIAMETER. DIMENSIONS ARE OUT TO OUT.

| FOOTING SIZE | REINFORCING STEEL (ONE FOOTING) | | | TOTAL WEIGHT (LB.) | STRUCTURAL CONCRETE (CY) | |
|-----------------|---------------------------------|---------------------|--------|--------------------|--------------------------|------|
| | BAR | NO., SIZE & SPACING | LENGTH | | | |
| 3'-6 x 7' x 23' | d2 | 46 - #10 AS SHOWN | 10'-10 | 2144 | 2937 | 20.9 |
| | f1 | 23 - #5 @ 1'-0 | 6'-8 | 160 | | |
| | f2 | 7 - #5 @ 1'-0 | 22'-8 | 165 | | |
| | g1 | 23 - #6 @ 1'-0 | 6'-8 | 230 | | |
| | g2 | 7 - #6 @ 1'-0 | 22'-8 | 238 | | |
| 3'-6 x 8' x 23' | d2 | 46 - #10 AS SHOWN | 10'-10 | 2144 | 3054 | 23.9 |
| | f1 | 23 - #5 @ 1'-0 | 7'-8 | 184 | | |
| | f2 | 8 - #5 @ 1'-0 | 22'-8 | 189 | | |
| | g1 | 23 - #6 @ 1'-0 | 7'-8 | 265 | | |
| | g2 | 8 - #6 @ 1'-0 | 22'-8 | 272 | | |
| 3'-6 x 9' x 23' | d2 | 46 - #10 AS SHOWN | 10'-10 | 2144 | 3222 | 26.8 |
| | f1 | 23 - #5 @ 1'-0 | 8'-8 | 208 | | |
| | f2 | 9 - #5 @ 1'-0 | 22'-8 | 213 | | |
| | g1 | 27 - #6 @ 0'-10 | 8'-8 | 351 | | |
| | g2 | 9 - #6 @ 1'-0 | 22'-8 | 306 | | |



d2 BAR LAYOUT
(SEE SECTION A-A ON SHEET H24-71-06.)

FOOTING NOTES:

THESE SPREAD FOOTINGS ARE DESIGNED AND DETAILED TO BE USED WITH THE CAP AND COLUMN DETAILS OF THE TEE PIERS AS SHOWN ON SHEET H24-71-06.

THESE SPREAD FOOTINGS SHALL EXTEND AT LEAST 6 INCHES INTO SUITABLE FOUNDATION ROCK AND THE LAST 6 INCHES OF ROCK EXCAVATION SHALL BE TO NEAT LINES OF MASONRY. THE FOUNDATION ROCK SHALL HAVE A MINIMUM LRPD NOMINAL BEARING RESISTANCE OF 30 KIIPS PER SQUARE FOOT (ALLOWABLE BEARING VALUE OF AT LEAST 5 TONS PER SQUARE FOOT).

| | | |
|--|---|------------------|
| 04-12 LATEST REVISION DATE <i>Thomas E. McQuinn</i> APPROVED BY BRIDGE ENGINEER | | |
| | STANDARD DESIGN - 24' ROADWAY, THREE SPAN BRIDGE PRETENSIONED PRESTRESSED CONCRETE BEAM BRIDGES DECEMBER, 2006 | |
| | TEE PIER - SPREAD FOOTINGS | H24-76-06 |
| | 45° SKEW - H=16' TO 24' | |

REVISED 04-12 - EXCAVATION LIMIT WAS CHANGED TO 3'-0.