

LOOKING IN DIRECTION OF TRAFFIC

LOOKING IN DIRECTION OF TRAFFIC

— C OF GATE HINGE

④ TRUSS SUPPORT POST  
AT OUTSIDE SHOULDER

DETAIL J

W6x20 (TYP.)

SEE STANDARD SHEET SOST-13-11 FOR HANDRAIL POST BASE PLATE DETAILS.

LADD

1'-2"

1'-11"

W

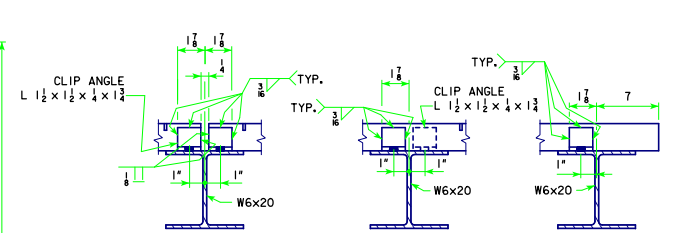
G, H, J, K, L

HANDRAIL IS TO BE USED FULL LENGTH OF RUNWAY

HANDRAIL IS TO BE USED FULL LENGTH OF RUNWAY

SHOWING HANDRAIL AND GATE DETAILS  
(GATE IS LOCATED ONLY ON SIDE FARTHEST FROM TRUSS)

SHOWING HANDRAIL AND GATE DETAILS  
(GATE IS LOCATED ONLY ON SIDE FARTHEST FROM TRUSS)



## SECTION H-H

## SECTION J-J

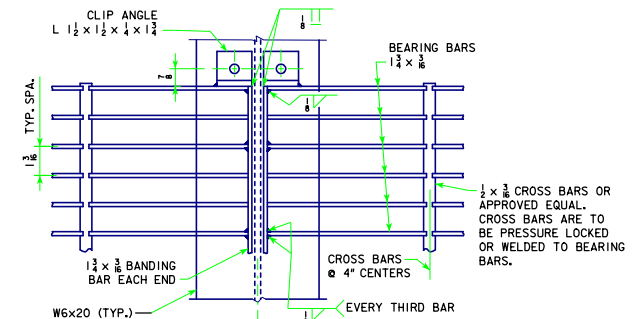
NOTES:

DRILL  $\frac{3}{8}$ "  $\phi$  HOLE IN CLIP ANGLE AND  $\frac{3}{8}$ "  $\phi$  HOLE IN W6x20 FOR  $\frac{1}{2}$ "  $\phi$  A325 GALVANIZED BOLT WITH WASHERS, NUT, AND JAM NUT. ADJUST CLIP SO GRATING BEARS ON BEAM.

THE GALVANIZED STEEL BAR GRATING INCLUDING BEARING BAR, CROSS BARS, AND BANDING BARS SHALL COMPLY WITH THE REQUIREMENTS OF ASTM A1011 TYPE 2.

SPAN	TRUSS SUPPORT POST	W
50' - 100'	HSS 14.000 x 0.500	1'-7 $\frac{7}{8}$
105' - 130'	HSS 16.000 x 0.500	1'-5 $\frac{11}{16}$

SPAN	TRUSS SUPPORT POST	W
50' - 100'	HSS 14.000 x 0.500	1'-7 $\frac{7}{8}$
105' - 130'	HSS 16.000 x 0.500	1'-5 $\frac{11}{16}$



DETAIL J

NOTE: SEE STANDARD SHEET SOST-13-II FOR SECTION L-L.  
NOTE: SEE STANDARD SHEET SOST-15-II FOR LADDER DETAILS.

**LATEST REVISION DATE**

APPROVED BY BRIDGE ENGINEER



**Iowa Department of Transportation**  
*Highway Division*

STANDARD DESIGN

## STEEL OVERHEAD SIGN TRUSS

SEPTEMBER, 2011

### DMS RUNWAY DETAILS

## 50'-130' SPANS

SOST-12-11