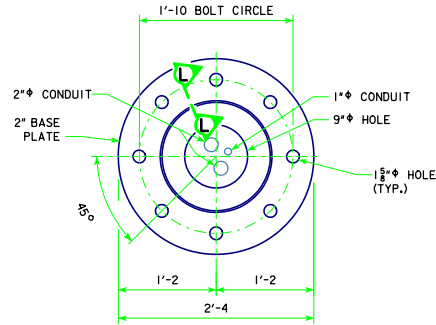
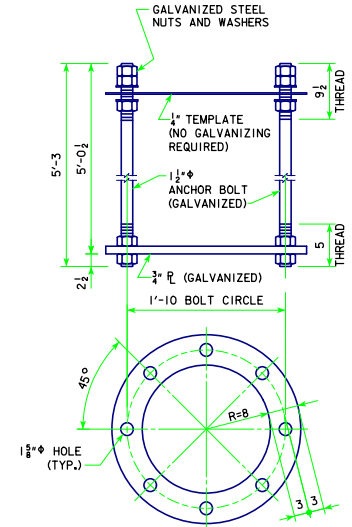


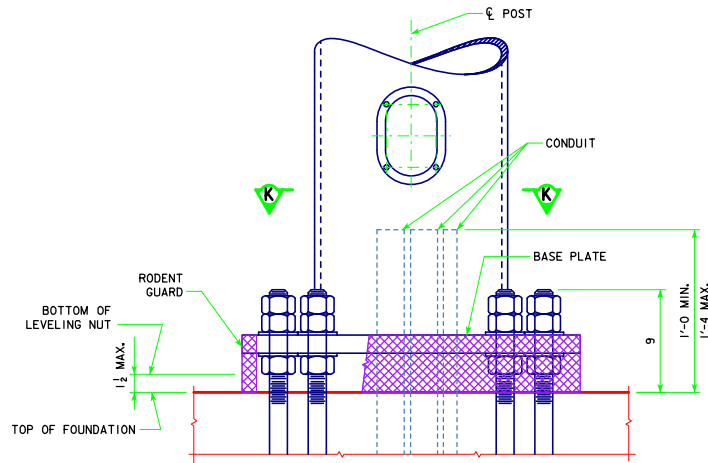
SECTION L-L



SECTION K-K



ANCHOR BOLT ASSEMBLY




POST BASE DETAIL
(SHOWING THE RODENT GUARD)

THE RODENT GUARD SHALL BE PLACED AROUND THE BASE PLATE.

THE RODENT GUARD IS STAINLESS STEEL STANDARD GRADE WIRE CLOTH, 1/4" MAXIMUM OPENING WITH A MINIMUM WIRE DIAMETER OF AWG NO. 16 WITH A MINIMUM 2" LAP.

SECURE TO BASE PLATE AFTER ERECTION WITH 3/4" STAINLESS STEEL BANDING. THE RODENT GUARD SHALL NOT EXTEND ABOVE THE TOP OF THE BASE PLATE.

NOTE: SEE STANDARD SHEET RDMS-05-13 FOR ANCHOR BOLT NOTES.

LATEST REVISION DATE	<i>Norman E. McQuinn</i> APPROVED BY BRIDGE ENGINEER	 Iowa Department of Transportation Highway Division	
		STANDARD DESIGN ROADSIDE DYNAMIC MESSAGE SIGN (DMS) SUPPORT APRIL, 2013	
		SUPPORT POST BASE DETAILS	RDMS-04-13