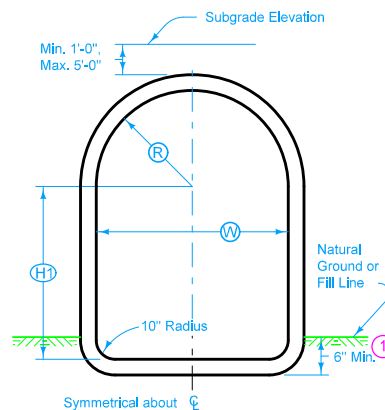
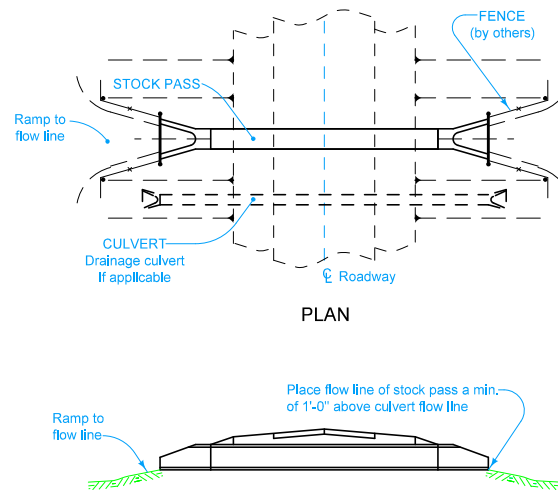


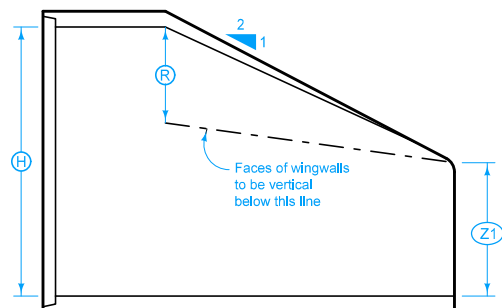
DETAIL OF INTERMEDIATE UNIT



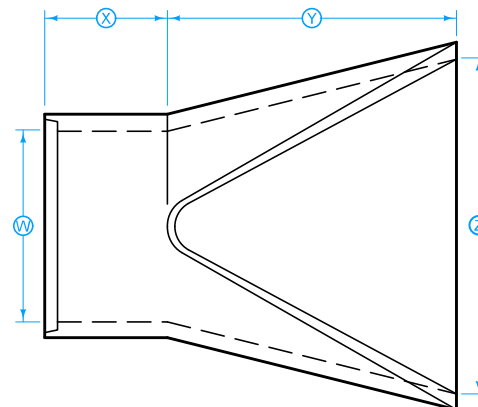
END VIEW OF INTERMEDIATE UNIT



LONGITUDINAL SECTION



APRON LONGITUDINAL SECTION



PLAN OF APRON

Furnish Precast Stock Pass complying with Section 2415 of the Standard Specifications. Install according to Section 2416 of the Standard Specifications.

Details indicated are typical. Alternate designs or methods may be submitted to the Engineer for approval.

Payment is full compensation for furnishing and installing stockpass and apron.

- ① Perform excavation below ground line using a template conforming to the shape of the stockpass.

Possible Contract Items:

Stockpass Apron, 4' x 6' Precast Concrete
Stockpass Apron, 5' x 7' Precast Concrete
Stockpass, 4' x 6' Precast Concrete
Stockpass, 5' x 7' Precast Concrete

Structure	DIMENSIONS FOR APRON					
	(W)	(H)	(R)	(X)	(Y)	(Z)
4' x 6'	4'	6'	2'	3'-2"	7'	2'-11"
5' x 7'	5'	7'	2'-6"	1'-9"	7'-5 1/2"	7'

Structure	DIMENSIONS FOR INTERMEDIATE UNIT			
	(W)	(H)	(R)	(H1)
4' x 6'	4'	6'	2'	4'
5' x 7'	5'	7'	2'-6"	4'-6"

Iowa Department of Transportation STANDARD ROAD PLAN <small>REVISIONS: Modified notes, Removed reinforcing and tongue and groove details.</small>	<small>REVISION</small> 4 10-15-13	
	RF-8 <small>SHEET 1 of 1</small>	
	<small>APPROVED BY DESIGN METHODS ENGINEER</small> 	
	PRECAST STOCK PASS	