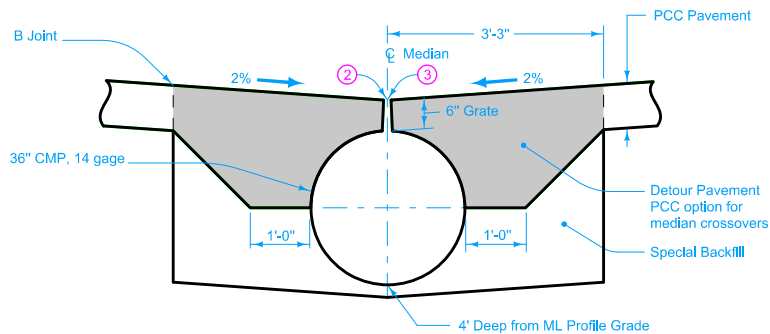
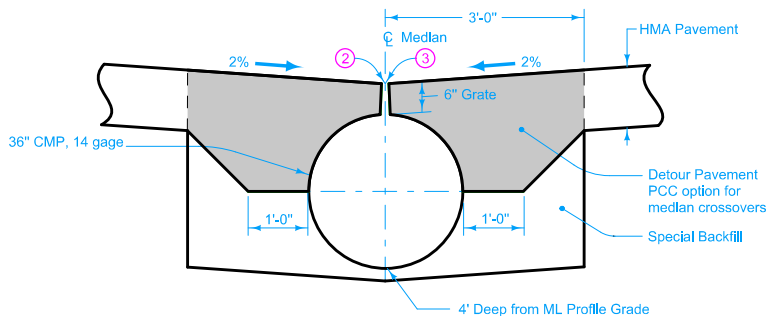


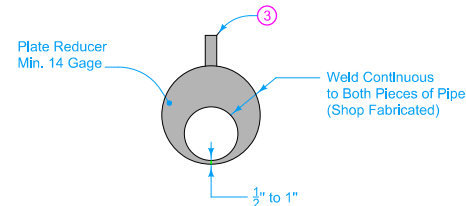
LONGITUDINAL SECTION THROUGH CMP SLOTTED DRAIN ASSEMBLY



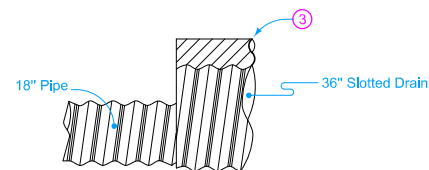
PCC PAVEMENT SITUATION



HMA PAVEMENT SITUATION



END VIEW OF PIPE REDUCER



SIDE VIEW OF PIPE REDUCER

TABLE OF QUANTITIES			
Standard Road Plan	PV-500	PV-503	PV-506
Median Width	50'	64'	68.24'
Slotted Drain Length	116'	110'	110'
Pipe Length	134'	102'	106'
Bid Items			
36" Corrugated Metal Slotted Pipe Drain w/6" Grate	116'	110'	110'
18" dia. Corrugated Metal Entrance Pipe Culvert	268'	204'	212'

- ① Beveled pipe and guard. See RF-27.
- ② During construction of crossover pavement, cover slotted drain with duct tape or wood block.
- ③ Slotted grate 6 inches high x $1\frac{3}{4}$ inches opening width. Use $\frac{3}{16}$ inch material for spacers and bearing bars (sides).

Possible Contract Items:
 Beveled Pipe and Guard
 Culvert, Unclassified Entrance Pipe, 18" Dia.
 Detour Pavement
 Drain, Corrugated Metal Pipe Slotted, 36", w/6" Grate
 Special Backfill

Possible Tabulation:
 112-8

 Iowa Department of Transportation STANDARD ROAD PLAN	REVISION	
	3	10-15-13
	RF-45	
	SHEET 1 of 1	
REVISIONS: Changed the bid item Culvert, Unclassified Entrance Pipe to 18" In the Possible Contract Items and In the drawings.		
APPROVED BY DESIGN METHODS ENGINEER Brian Smith		
SLOTTED DRAIN FOR MEDIAN CROSSEVERS		