

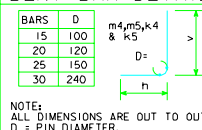
VARIABLE DIMENSIONS AND QUANTITIES FOR BARREL SECTIONS

Table with columns: DIMENSIONS (FILL, H, A, B, C, D, E, F, G, J, K, U, V, W, X, Y, Z), BAR LIST (a1, a2, b1, b2, e1, e2, f1, f2, k1, k2, k4, h, v, FILL), and values for various dimensions and quantities.

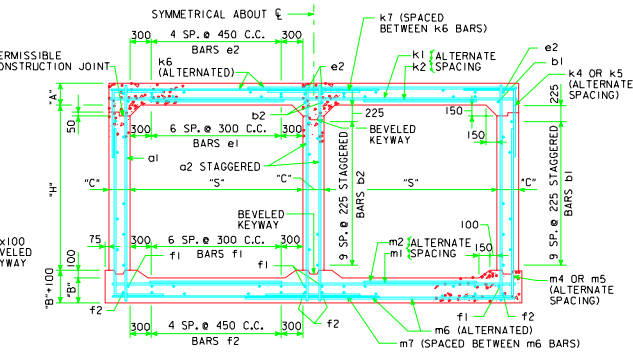
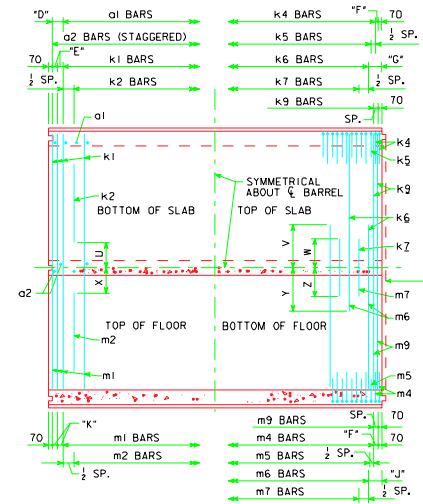
Table with columns: BAR LIST (k5, k6, k7, k9, m4, m5, m6, m7, m9), QUANTITIES (CONCRETE m³/M, STEEL kg/m, FILL), and values for various dimensions and quantities.

* THESE DIMENSIONS ARE CORRECT FOR 11 480 LONG STANDARD SECTIONS ONLY. DIMENSIONS MUST BE RECALCULATED FOR ALL OTHER SECTION LENGTHS.

BENT BAR DETAIL



NOTE: ALL DIMENSIONS ARE OUT TO OUT. D = PIN DIAMETER.



NOTES: 1. SEE SHEET MTRWCB-91-95 FOR GENERAL INFORMATION, SPECIFICATIONS, AND DESIGN STRUCSES.

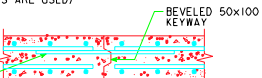
END SECTION - PLAN VIEW

NOTE: 1. END SECTION DETAILS SHOWN ARE FOR A 15° SKEW BARREL... 2. ALL LONGITUDINAL BARREL STEEL SHALL EXTEND AT LEAST TO THE BACK OF PARAPET.

STANDARD SECTION PLAN VIEW

NOTE: TYPICAL FOR LENGTHS OF 11 480 mm (KEYWAY IS TO BE OMITTED WHEN BELL JOINTS ARE USED)

ONE SET OF SIZE F1 x 1050 DOWEL BARS ø 300 SPACING REQUIRED IN SLAB AT ALL CURB/ BARREL JOINTS... F1 BARS REQUIRED = 18, TOTAL MASS = 30 kg.



TOP SLAB CONSTRUCTION JOINT DETAIL

CULVERT BARREL DETAILS

FOR TWIN REINFORCED CONCRETE BOX CULVERTS

PROJECT DEVELOPMENT DIVISION IOWA DEPARTMENT OF TRANSPORTATION

JULY, 1995

MTRWCB 2400-2400-95

Vertical stamp area containing 'LATEST REVISION DATE: 04-02' and 'APPROVED BY: Catherine G....'.