

VARIABLE DIMENSIONS AND QUANTITIES FOR BARREL SECTIONS

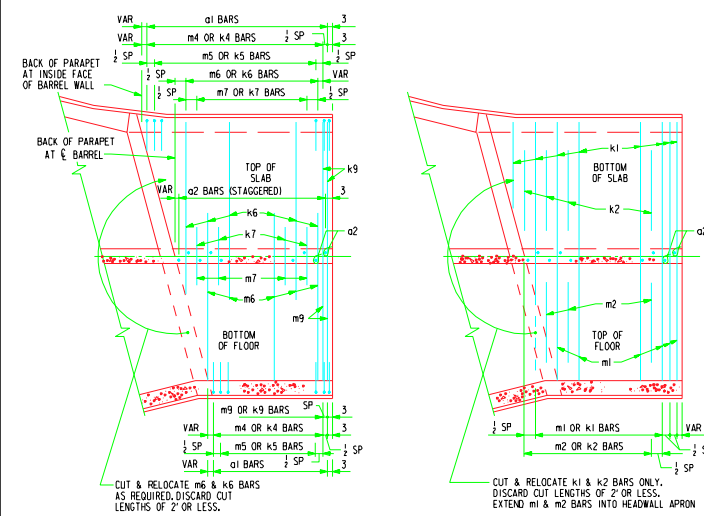
Table with columns for barrel section dimensions (a1 through m9) and rows for fill size, length, and width. It includes a sub-table for concrete and steel quantities.

Table with columns for dimensions (H, A, B, C, D, E, F, G, I, J, V, W, X, Y, Z) and rows for concrete and steel quantities.

* THESE DIMENSIONS ARE CORRECT FOR 38" LONG STANDARD SECTIONS ONLY. DIMENSIONS MUST BE RECALCULATED FOR ALL OTHER SECTION LENGTHS.

NOTES:

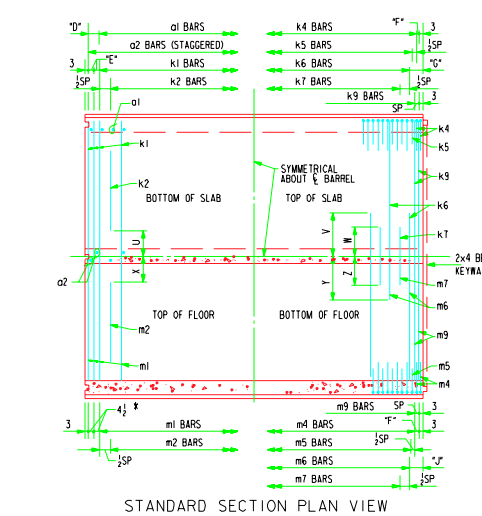
1. SEE DRAWING TWRCB-GI-87 FOR GENERAL INFORMATION, SPECIFICATIONS, AND DESIGN STRESSES.



END SECTION - PLAN VIEW (KEYWAY NOT SHOWN)

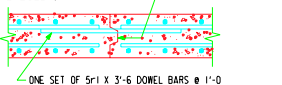
NOTE: END SECTION DETAILS SHOWN ARE FOR A 15° SKEW BARREL. USE FOR SKEWS OF 30° & 45° BY INCREASING THE NUMBER OF TRANSVERSE REINFORCING BARS REQUIRED TO BE CUT & RELOCATED.

NOTE: ALL LONGITUDINAL BARREL STEEL SHALL EXTEND AT LEAST TO THE BACKFACE OF PARAPET.



STANDARD SECTION PLAN VIEW

NOTE: TYPICAL FOR LENGTHS OF 38". (KEYWAY IS TO BE OMITTED WHEN BELL JOINTS ARE USED)

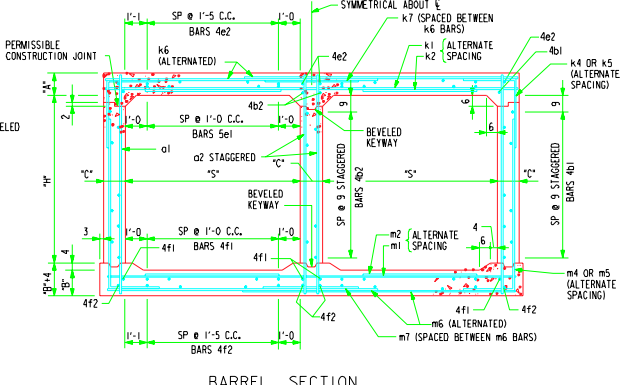


TOP SLAB CONSTRUCTION JOINT DETAIL

BENT BAR DETAIL



NOTE: ALL DIMENSIONS ARE OUT TO OUT. D = PIN DIAMETER.



BARREL SECTION

STANDARD DESIGN CULVERT BARREL DETAILS

FOR TWIN REINFORCED CONCRETE BOX CULVERTS

HIGHWAY DIVISION IOWA DEPARTMENT OF TRANSPORTATION

LATEST REVISION DATE: 12-5-86

APPROVED BY: [Signature]

JULY, 1987

TWRCB 12-6-87