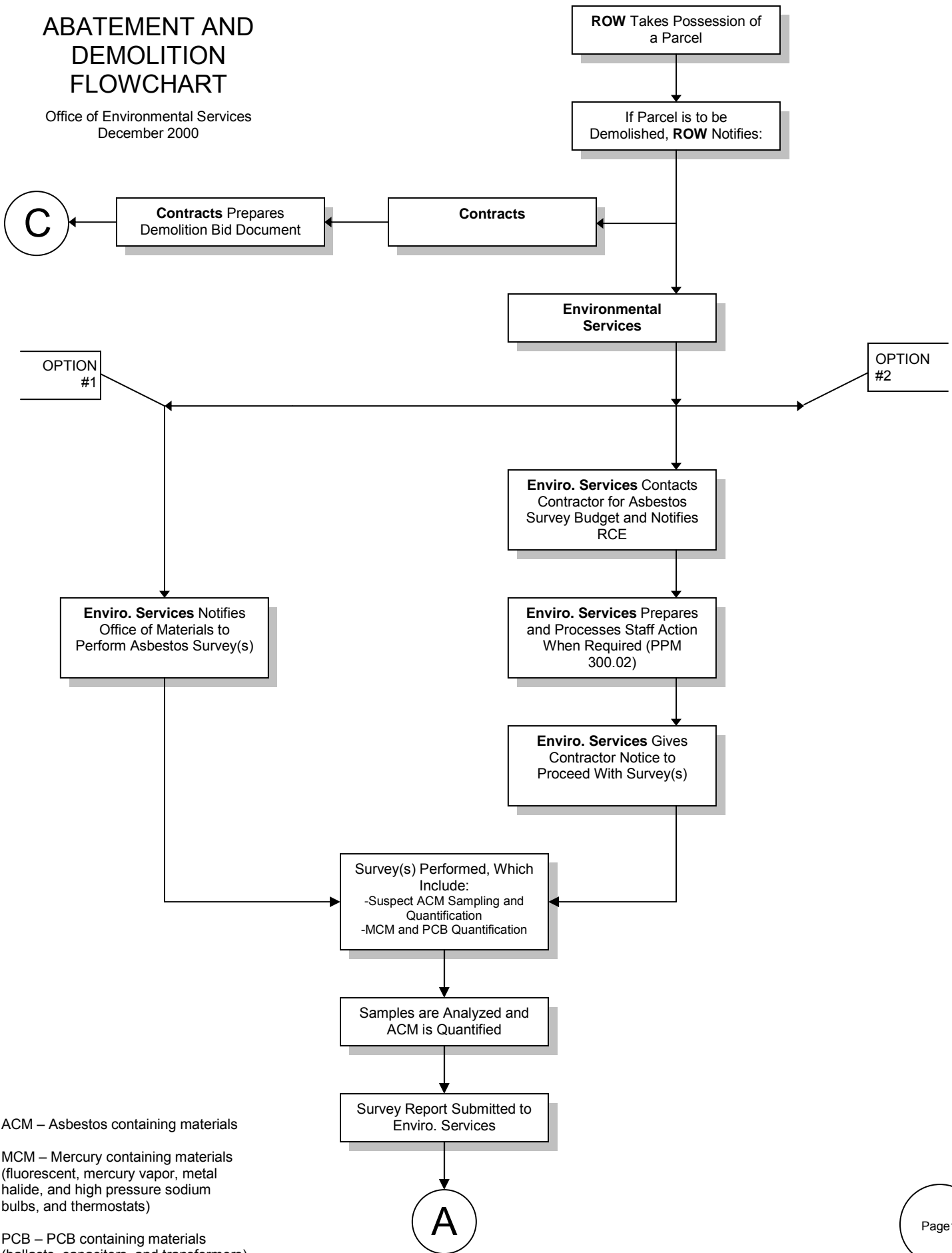
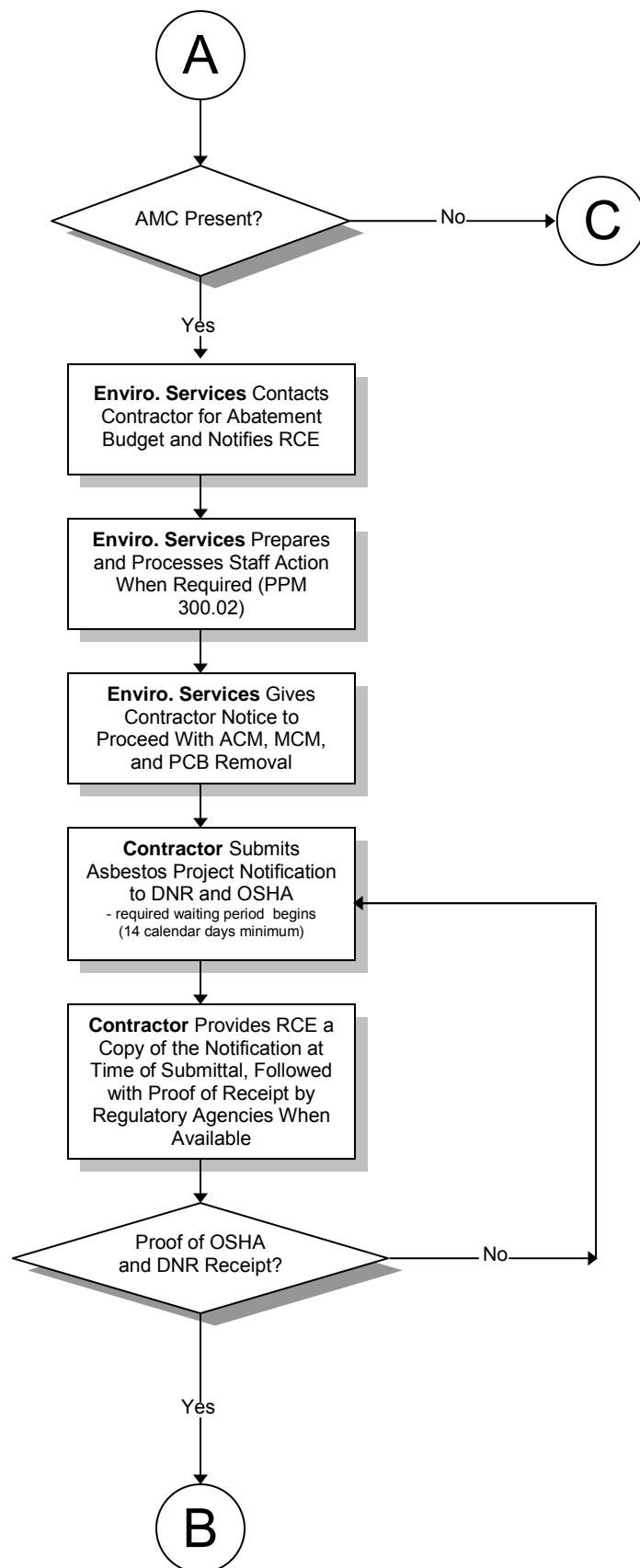


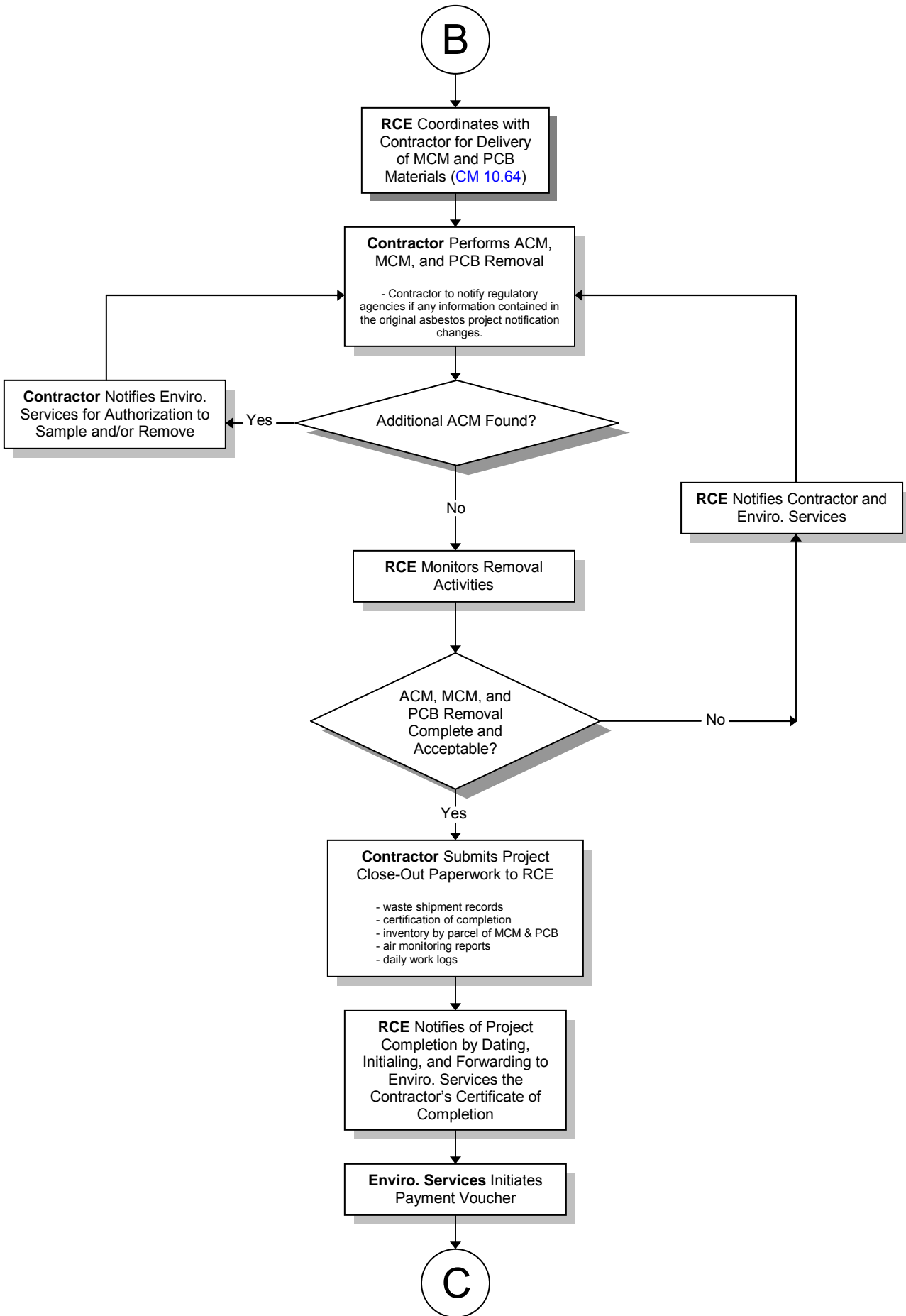
# ABATEMENT AND DEMOLITION FLOWCHART

Office of Environmental Services  
December 2000



ACM – Asbestos containing materials  
MCM – Mercury containing materials (fluorescent, mercury vapor, metal halide, and high pressure sodium bulbs, and thermostats)  
PCB – PCB containing materials (ballasts, capacitors, and transformers)





C

Letting of Demolition as Separate Project or Included in Another Project (i.e. Grading Project)

**Contractor** Notifies RCE of Scheduled Demolition Start Date at Least 25 Calendar Days in Advance of Building Demolition per [Article 2538.02](#) (Div. II)

**RCE** Notifies Enviro. Services at Least 18 Calendar Days in Advance of Building Demolition by Providing the Information Listed in [CM 10.61](#)

**Enviro. Services** Submits Demolition Notification to DNR at Least 14 Calendar Days in Advance of Building Demolition

**Enviro. Services** Sends a Copy of the Notification to RCE (Earliest Start Date Listed in Block IX)

Demolition Delayed?\*

Yes

**Contractor** Notifies RCE and Enviro. Services of New Start Date As Soon As Possible, But No Later Than 3 Calendar Days Prior to Original Scheduled Start Date

**Enviro. Services** Notifies DNR of Demolition Start Date Change per 40 CFR 61.145(b)(3)(iv)(A)

No

**Contractor** Performs Demolition

**RCE** Performs Normal Contract Administration

\*Due to regulatory requirements, demolition activities cannot begin prior to the originally scheduled start date unless notification can be provided to DNR at least 14 calendar days prior to the new start date [40 CFR 61.145(b)(3)(iv)(B)]

Page4