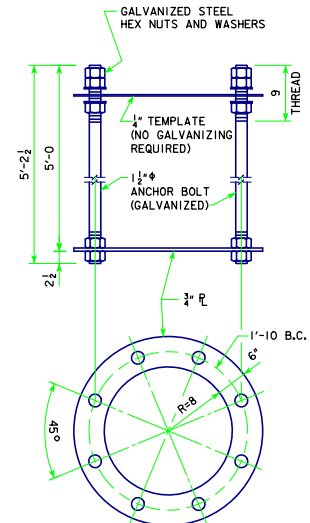


POST BASE DETAIL
(SHOWING THE RODENT GUARD)

THE RODENT GUARD SHALL BE PLACED AROUND THE BASE PLATE.


THE RODENT GUARD IS STAINLESS STEEL STANDARD GRADE WIRE CLOTH, $\frac{1}{2}$ " MAXIMUM OPENING WITH A MINIMUM WIRE DIAMETER OF AWG NO. 16 WITH A MINIMUM 2" LAP.

SECURE TO BASE PLATE AFTER ERECTION WITH $\frac{3}{8}$ " STAINLESS STEEL BANDING. THE RODENT GUARD SHALL NOT EXTEND ABOVE THE TOP OF THE BASE PLATE.



ANCHOR BOLT ASSEMBLY

(ALL ANCHOR BOLT MATERIAL SHALL COMPLY WITH THE REQUIREMENTS OF IOWA DOT MATERIALS I.M. 453.08.)

LATEST REVISION DATE	<i>Mark E. McQuinn</i> APPROVED BY BRIDGE ENGINEER	 Iowa Department of Transportation Highway Division	
		STANDARD DESIGN ROADSIDE DYNAMIC MESSAGE SIGN (D.M.S.) SUPPORT SEPTEMBER, 2010	
		SUPPORT POST BASE DETAILS	DMS-SS4-10