

Place Two-Way Traffic symbol and DO NOT PASS signs alternately on both sides of the roadway at a maximum of one-half mile intervals for both directions of travel. Always have signs in sight of motorists.


When the Average Daily Traffic (ADT) exceeds 20,000 vehicles per day or when a traffic queue extends beyond the advanced signing, place RIGHT/LEFT LANE CLOSED 4 MILES and RIGHT/LEFT LANE CLOSED 2 MILES signs (W20-5) on both sides of the roadway 4 miles and 2 miles in advance of the lane closure, respectively, as appropriate.

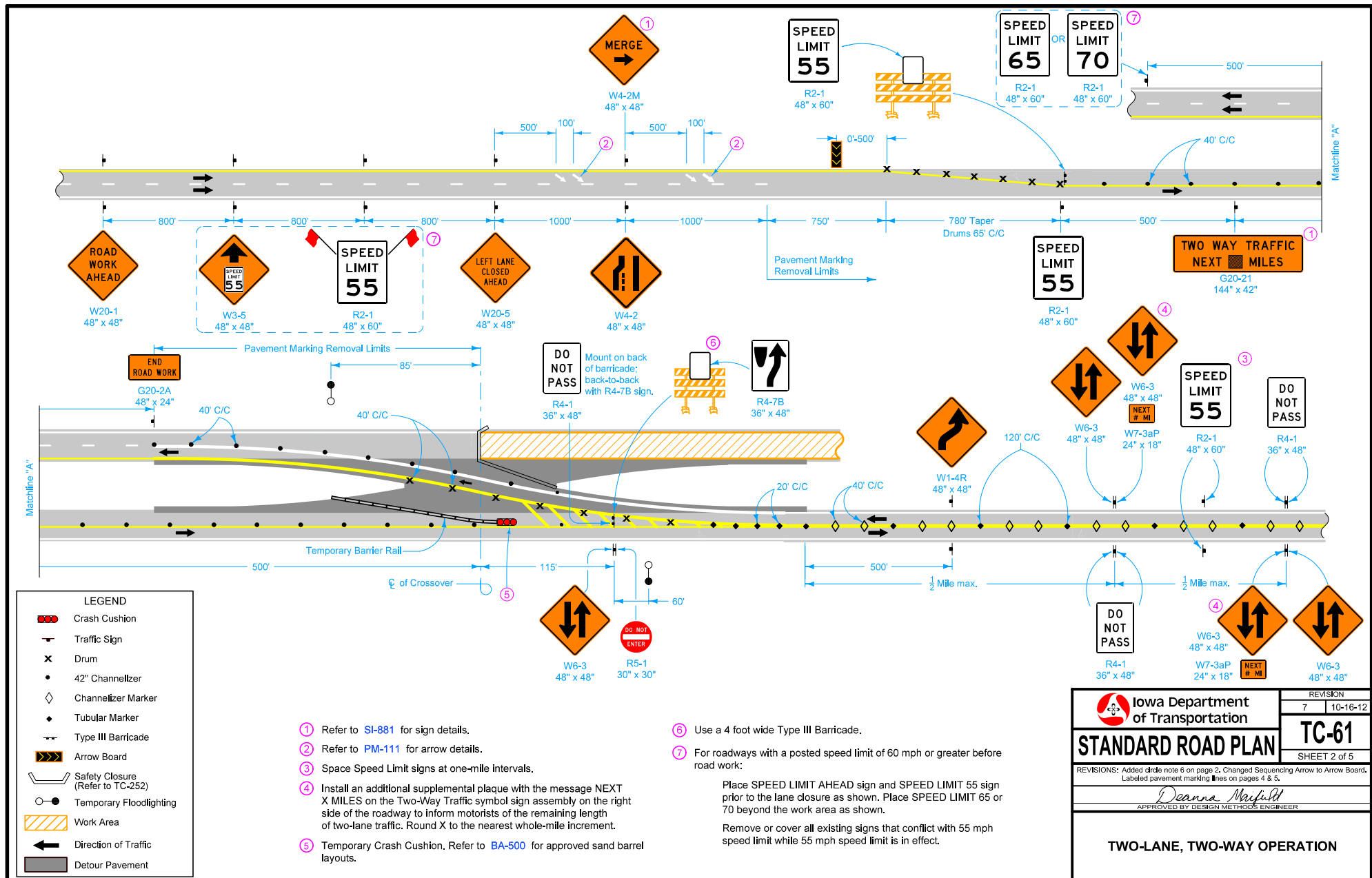
Possible Contract Items:

Painted Symbols and Legends	Temporary Barrier Rail
Pavement Marking Items	Temporary Crash Cushions
Pavement Marking Removed	Temporary Floodlighting
Safety Closures	Temporary Lane Separator System
	Traffic Control

Possible Tabulations:

108-13A, 108-22, 108-27, 108-29, 108-30, 108-33, 108-35

 Iowa Department of Transportation STANDARD ROAD PLAN	REVISION	
	7	10-16-12
	TC-61 SHEET 1 of 5	
REVISIONS: Added circle note 6 on page 2. Changed Sequencing Arrow to Arrow Board. Labeled pavement marking lines on pages 4 & 5.		
<i>Deanna Macfadyen</i> APPROVED BY DESIGN METHODS ENGINEER		
TWO-LANE, TWO-WAY OPERATION		



Iowa Department of Transportation

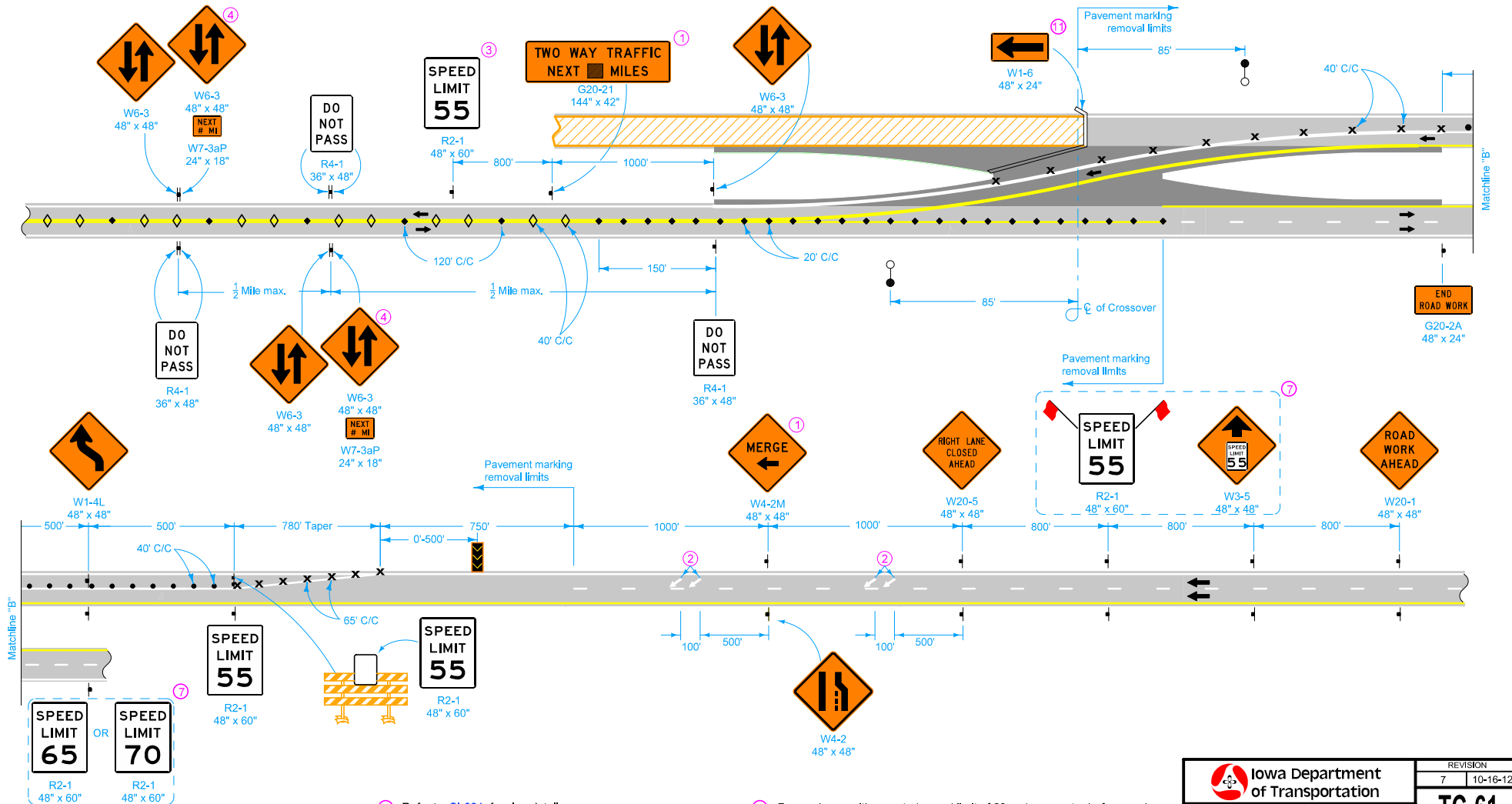
STANDARD ROAD PLAN

REVISIONS: Added circle note 6 on page 2. Changed Sequencing Arrow to Arrow Board. Labeled pavement marking lines on pages 4 & 5.

Deanna Mayfield
APPROVED BY DESIGN METHODS ENGINEER

TWO-LANE, TWO-WAY OPERATION

REVISION	
7	10-16-12
TC-61	
SHEET 2 of 5	



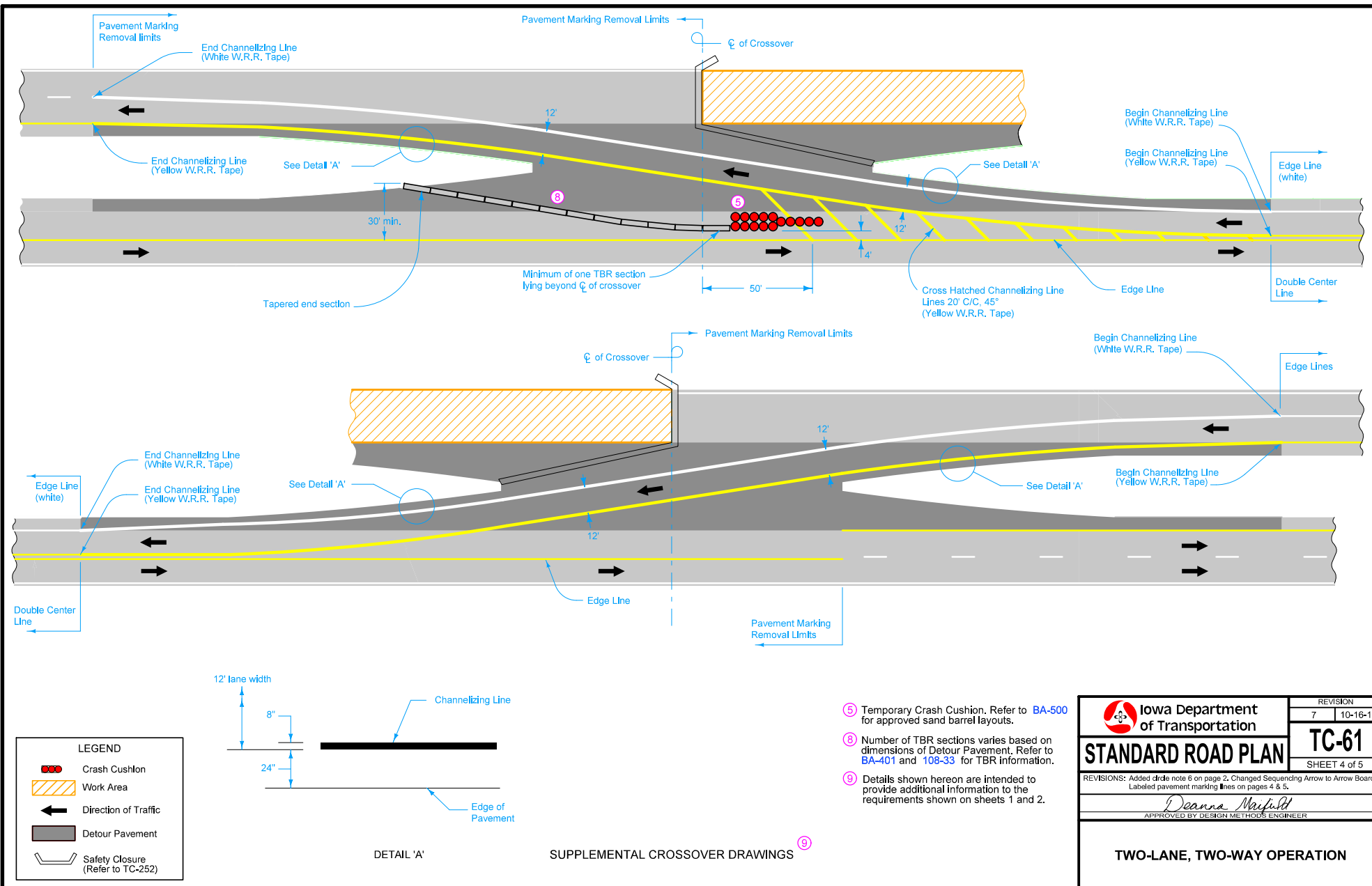
LEGEND

	Traffic Sign		Arrow Board
	Drum		Safety Closure (Refer to TC-252)
	42" Channelizer		Temporary Floodlighting
	Channelizer Marker		Work Area
	Tubular Marker		Direction of Traffic
	Type III Barricade		Detour Pavement

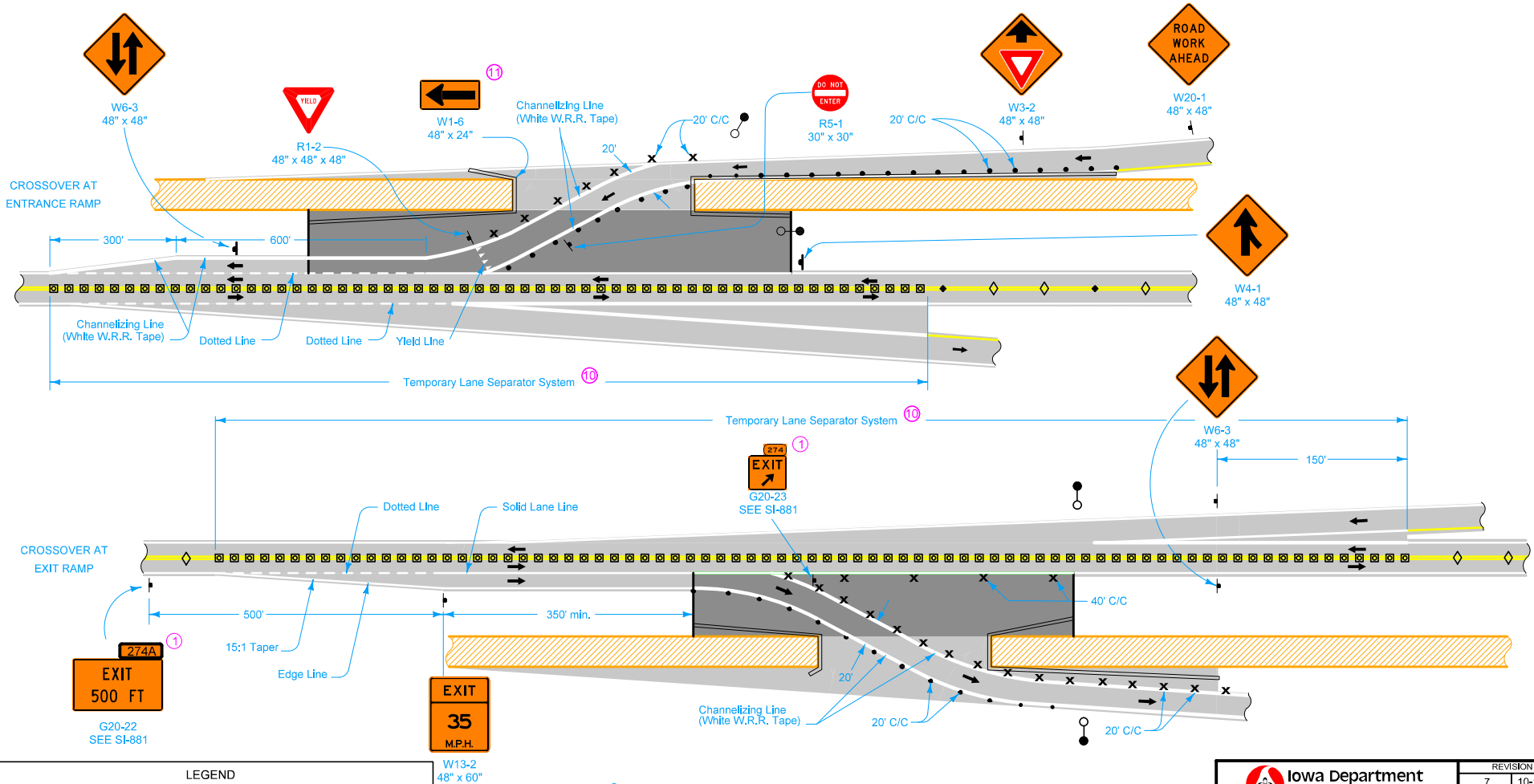
- ① Refer to **SI-881** for sign details.
- ② Refer to **PM-111** for arrow details.
- ③ Space Speed Limit signs at one-mile intervals.
- ④ Install an additional supplemental plaque with the message **NEXT X MILES** on the Two-Way Traffic symbol sign assembly on the right side of the roadway to inform motorists of the remaining length of two-lane traffic. Round X to the nearest whole-mile increment.

- ⑦ For roadways with a posted speed limit of 60 mph or greater before road work:
Place **SPEED LIMIT AHEAD** sign and **SPEED LIMIT 55** sign prior to the lane closure as shown. Place **SPEED LIMIT 65** or **70** beyond the work area as shown.
- ⑪ Add below R11-2 already included in Safety Closure.

Iowa Department of Transportation STANDARD ROAD PLAN <small>REVISIONS: Added circle note 6 on page 2. Changed Sequencing Arrow to Arrow Board. Labeled pavement marking lines on pages 4 & 5.</small> <i>Deanna Mayfield</i> <small>APPROVED BY DESIGN METHODS ENGINEER</small>	<small>REVISION</small> <table border="1"> <tr> <td>7</td> <td>10-16-12</td> </tr> </table>	7	10-16-12
	7	10-16-12	
	TC-61 <small>SHEET 3 of 5</small>		
	TWO-LANE, TWO-WAY OPERATION		

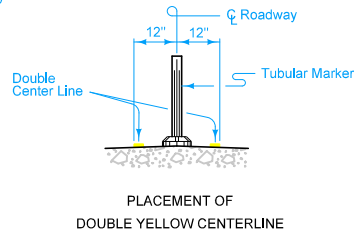


RAMP LOCATIONS



LEGEND

- | | | | |
|-----|--------------------------|----|----------------------------------|
| ⬇ | Traffic Sign | ☀ | Type 'A' Warning Light |
| × | Drum | ○● | Temporary Floodlighting |
| ◊ | 42" Channelizer | ▨ | Work Area |
| ◊ | Channelizer Marker | ▨ | Detour Pavement |
| ◆ | Tubular Marker | ← | Direction of Traffic |
| --- | Type III Barricade | ⏏ | Safety Closure (Refer to TC-252) |
| ⊠ | Temporary Lane Separator | | |



- ① Refer to SI-881 for sign details.
- ⑩ Place TLSS from start of ramp gore or start of full width decel lane to end of temporary ramp crossover pavement or end of ramp gore.
- ⑪ Add below R11-2 already included in Safety Closure.

<p>Iowa Department of Transportation</p> <p>STANDARD ROAD PLAN</p> <p>REVISIONS: Added circle note 6 on page 2. Changed Sequencing Arrow to Arrow Board. Labeled pavement marking lines on pages 4 & 5.</p> <p><i>Deanna Mufield</i> APPROVED BY DESIGN METHODS ENGINEER</p> <p>TWO-LANE, TWO-WAY OPERATION</p>	<p>REVISION</p> <table border="1"> <tr> <td>7</td> <td>10-16-12</td> </tr> </table>	7	10-16-12
	7	10-16-12	
	<p>TC-61</p> <p>SHEET 5 of 5</p>		