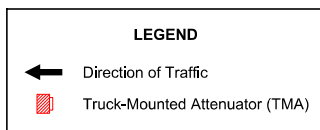


OUTSIDE EDGELINE OR LANELINE - DIVIDED OR UNDIVIDED

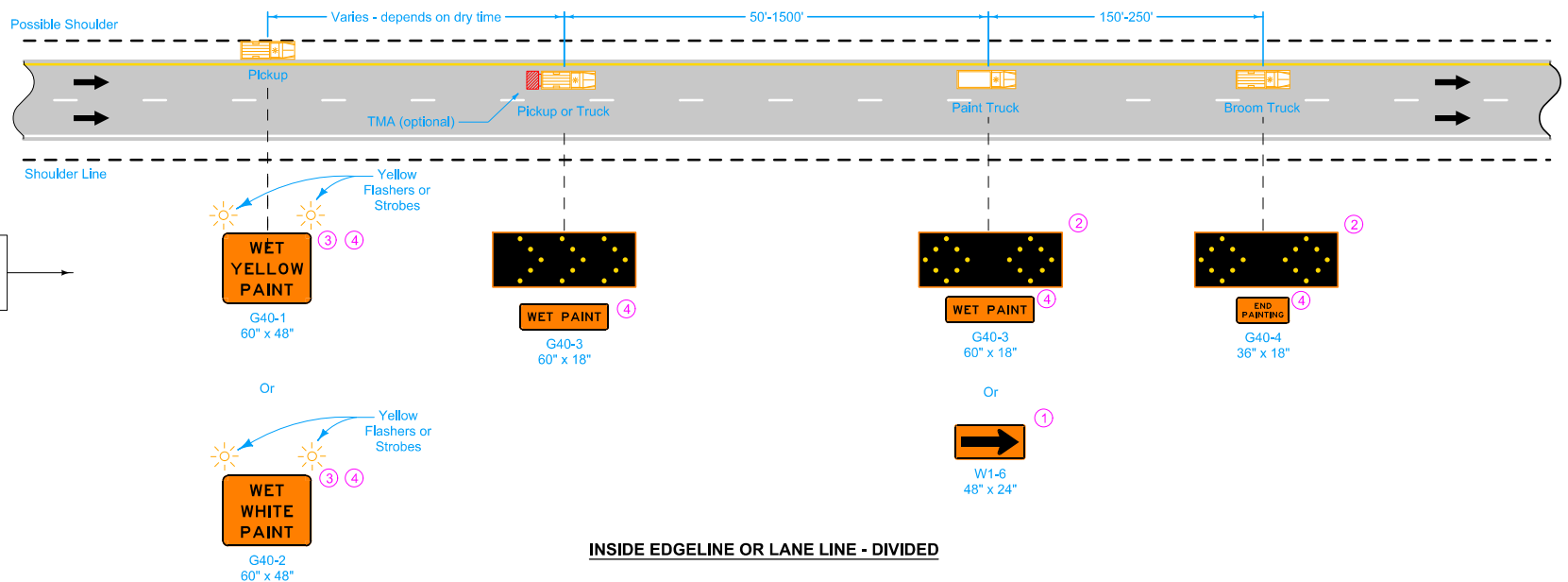
Possible Contract Item:
Traffic Control

Equip all vehicles with an amber Vehicle Warning Light.

- ① Optional Fluorescent Yellow Green (FYG) sign background may be used.
- ② This arrow board may be operated in a four-corner caution mode.
- ③ A vehicle mounted Changeable Message Sign (CMS) may be used in lieu of this sign.
- ④ Refer to [SI-881](#) for sign details.



<p>Iowa Department of Transportation</p> <p>STANDARD ROAD PLAN</p> <p>REVISIONS: Changed Arrow Display to Arrow Board to comply with changes to MUTCD.</p> <p><i>Deanna Macfadyen</i> APPROVED BY DESIGN METHODS ENGINEER</p> <p>PAVEMENT MARKING OPERATIONS</p>	<p>REVISION</p> <p>3 10-16-12</p>	
	<p>TC-433</p> <p>SHEET 1 of 3</p>	



INSIDE EDGELINE OR LANE LINE - DIVIDED

- ① Optional Fluorescent Yellow Green (FYG) sign background may be used.
- ② This arrow board may be operated in a four-corner caution mode.
- ③ A vehicle mounted Changeable Message Sign (CMS) may be used in lieu of this sign.
- ④ Refer to [SI-881](#) for sign details.

LEGEND

← Direction of Traffic

▨ Truck-Mounted Attenuator (TMA)

Iowa Department of Transportation

STANDARD ROAD PLAN

REVISIONS: Changed Arrow Display to Arrow Board to comply with changes to MUTCD.

Deanna Macfadyen
APPROVED BY DESIGN METHODS ENGINEER

PAVEMENT MARKING OPERATIONS

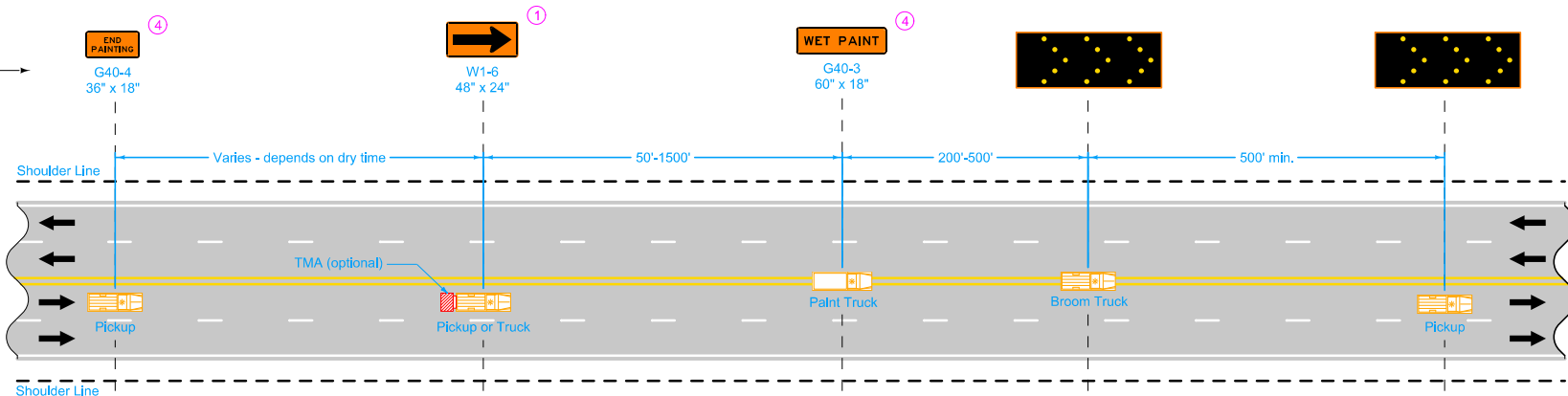
REVISION

3	10-16-12
---	----------

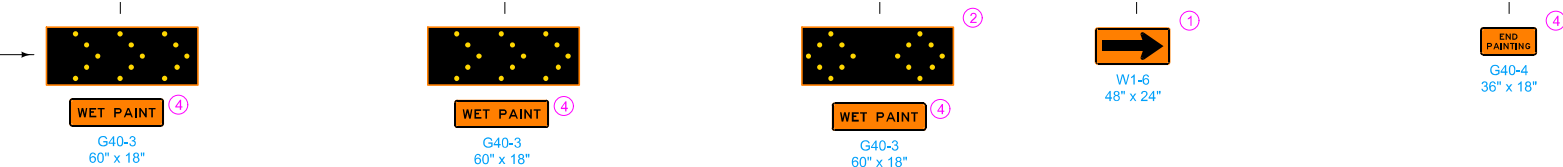
TC-433

SHEET 2 of 3

SIGNS FACING
OPPOSING TRAFFIC



SIGNS FACING TRAFFIC
APPROACHING FROM
THE REAR



CENTERLINE - UNDIVIDED ONLY

LEGEND

- ← Direction of Traffic
- ▨ Truck-Mounted Attenuator (TMA)

- ① Optional Fluorescent Yellow Green (FYG) sign background may be used.
- ② This arrow board may be operated in a four-corner caution mode.
- ④ Refer to [SI-881](#) for sign details.

<p>Iowa Department of Transportation</p> <p>STANDARD ROAD PLAN</p> <p>REVISIONS: Changed Arrow Display to Arrow Board to comply with changes to MUTCD.</p> <p><i>Deanna Macfadyen</i> APPROVED BY DESIGN METHODS ENGINEER</p> <p>PAVEMENT MARKING OPERATIONS</p>	<p>REVISION</p> <table border="1"> <tr> <td>3</td> <td>10-16-12</td> </tr> </table>	3	10-16-12
	3	10-16-12	
	<p>TC-433</p> <p>SHEET 3 of 3</p>		