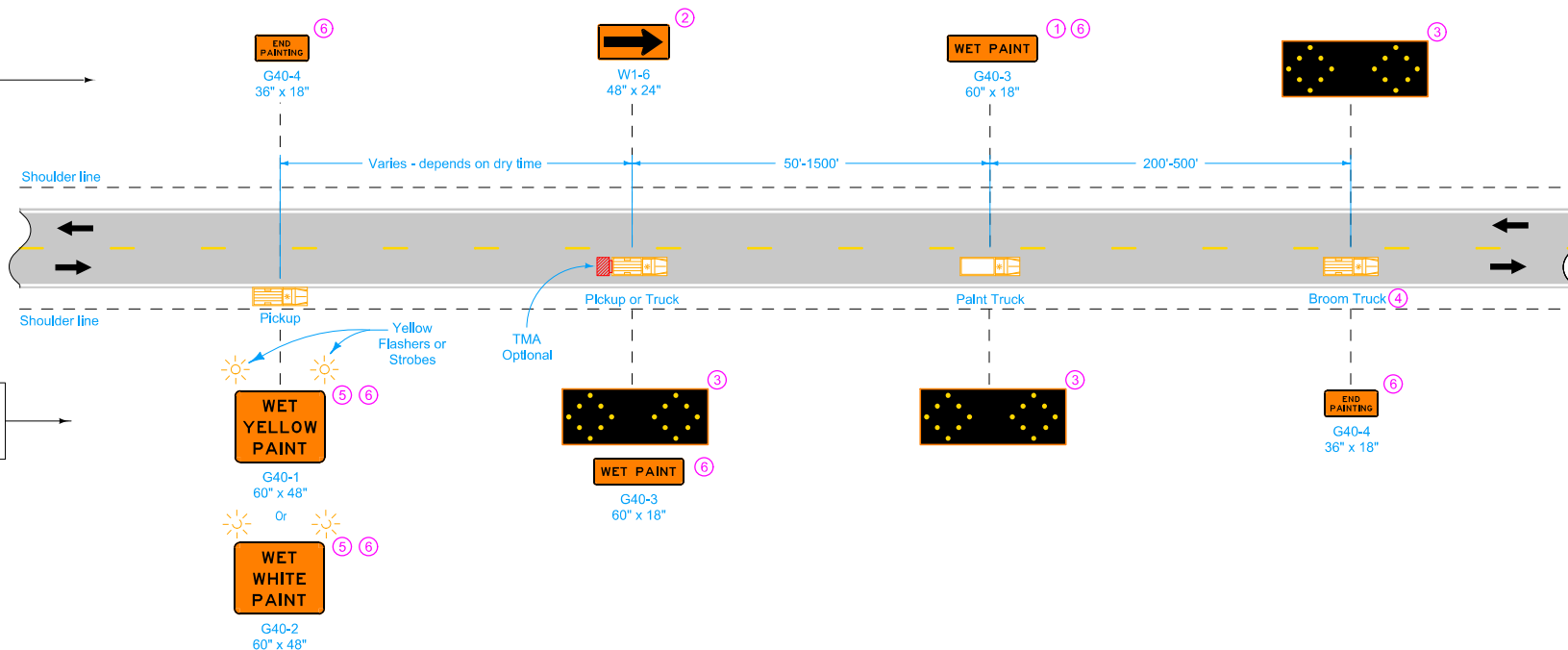


SIGNS FACING
OPPOSING TRAFFIC

SIGNS FACING TRAFFIC
APPROACHING FROM
THE REAR



VEHICLES NOT STRADDLING CENTERLINE

This layout may be used when painting edgeline or centerline markings.

Equip all vehicles with an amber Vehicle Warning Light.

- ① Use this sign when painting centerline markings.
- ② Optional Fluorescent Yellow Green (FYG) sign background may be used.
- ③ This arrow board may be operated in a four-corner caution mode.
- ④ Move this vehicle to the shoulder to accommodate passing traffic.
- ⑤ A vehicle mounted Changeable Message Sign (CMS) may be used in lieu of this sign.
- ⑥ Refer to [SI-881](#) for sign details.

Possible Contract Item:
Traffic Control

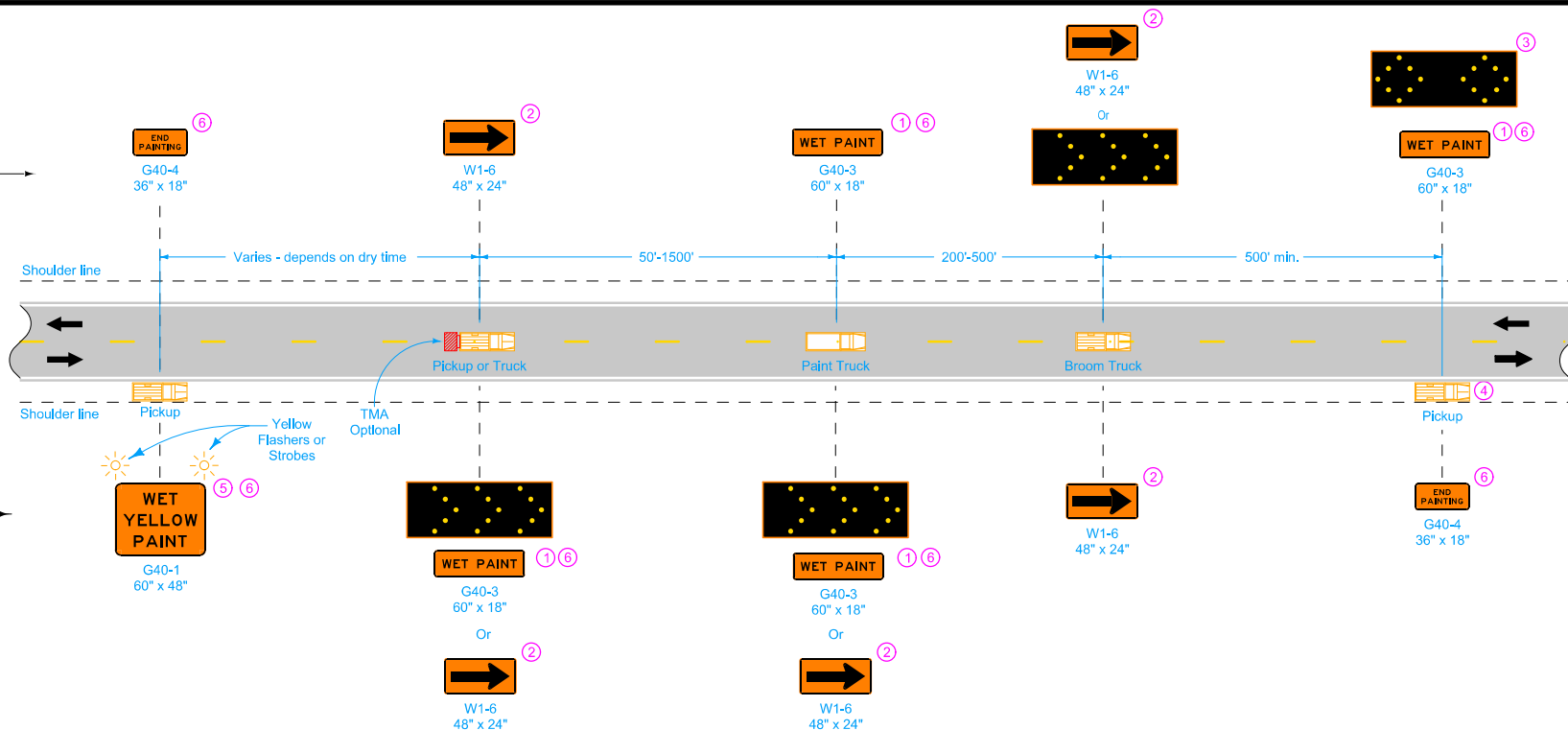
LEGEND

- ← Direction of Traffic
- ▨ Truck-Mounted Attenuator (TMA)

 Iowa Department of Transportation STANDARD ROAD PLAN <small>REVISIONS: Changed Arrow Display to Arrow Board to comply with changes to MUTCD.</small> <i>Deanna Macfadyen</i> <small>APPROVED BY DESIGN METHODS ENGINEER</small> PAVEMENT MARKING OPERATIONS TWO-LANE	<small>REVISION</small>	
	3	10-16-12
	TC-233	
	<small>SHEET 1 of 2</small>	

SIGNS FACING
OPPOSING TRAFFIC

SIGNS FACING TRAFFIC
APPROACHING FROM
THE REAR



VEHICLES STRADDLING CENTERLINE

LEGEND

- Direction of Traffic
- Truck-Mounted Attenuator (TMA)

- Use this sign when painting centerline markings.
- Optional Fluorescent Yellow Green (FYG) sign background may be used.
- This arrow board may be operated in a four-corner caution mode.
- Move this vehicle to the shoulder to accommodate passing traffic.
- A vehicle mounted Changeable Message Sign (CMS) may be used in lieu of this sign.
- Refer to [SI-881](#) for sign details.

<p>Iowa Department of Transportation</p> <p>STANDARD ROAD PLAN</p> <p>REVISIONS: Changed Arrow Display to Arrow Board to comply with changes to MUTCD.</p> <p><i>Deanna Macfadyen</i> APPROVED BY DESIGN METHODS ENGINEER</p> <p>PAVEMENT MARKING OPERATIONS TWO-LANE</p>	REVISION	3	10-16-12
	<p>TC-233</p> <p>SHEET 2 of 2</p>		