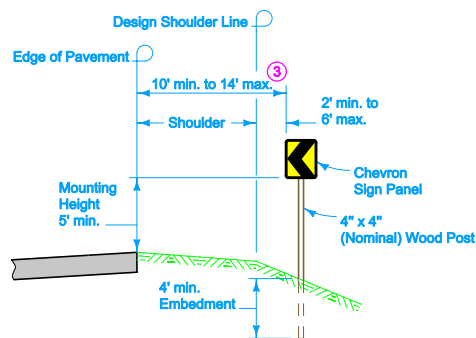
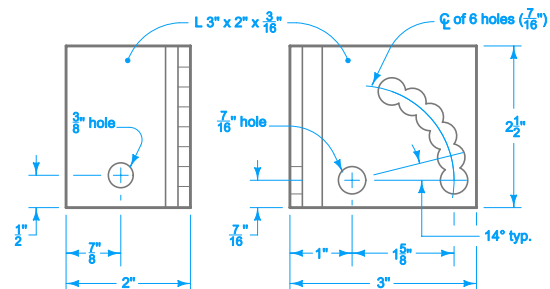


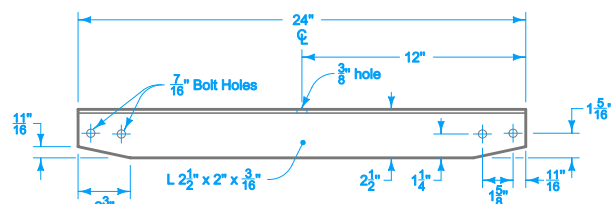
BACK VIEW OF
GUIDANCE MARKER, CHEVRON



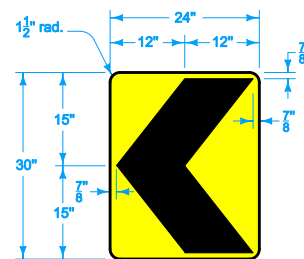
TYPICAL SECTION



BRACKET
Right side. Left side is mirror image.



BRACE



CHEVRON SIGN PANEL (W1-8)

Colors: Chevron - Black (non-reflective)
Background - Yellow (reflective)

To be effective, Chevron Sign Panels should be visible for at least 500 feet. Attach Chevron Sign Panels to the adjustable brackets at an angle so headlight beams are not reflected back into the driver's eye.


Furnish adjustable brackets in all aluminum or all galvanized steel products. Include locking devices on all bolts.

Each correctly installed "Guidance Marker, Chevron W1-8 (Special)" will be counted and paid for at the contract unit price. Payment is full compensation for furnishing and installing one wood post, two chevron W1-8 sign panels, approved mounting brackets, braces, and all work necessary to install as shown.

- ① Adjust chevron locations as necessary to meet (S) as near as possible.
- ② Possible delineators.
- ③ Align horizontal placement of Chevrons with roadway delineators if applicable.

Possible Contract Item:
Guidance Marker, Chevron W1-8 (Special)

Possible Tabulation:
108-34

| | | |
|---|---------------|----------|
|  Iowa Department of Transportation | REVISION | |
| | 1 | 10-19-10 |
| | SI-175 | |
| | SHEET 1 of 1 | |
| STANDARD ROAD PLAN | | |
| REVISIONS: Updated formatting. Added circle notes 2 and 3. Clarified measurement and payment. | | |
| <i>Deanna Maiford</i> APPROVED BY DESIGN METHODS ENGINEER | | |
| CHEVRONS | | |