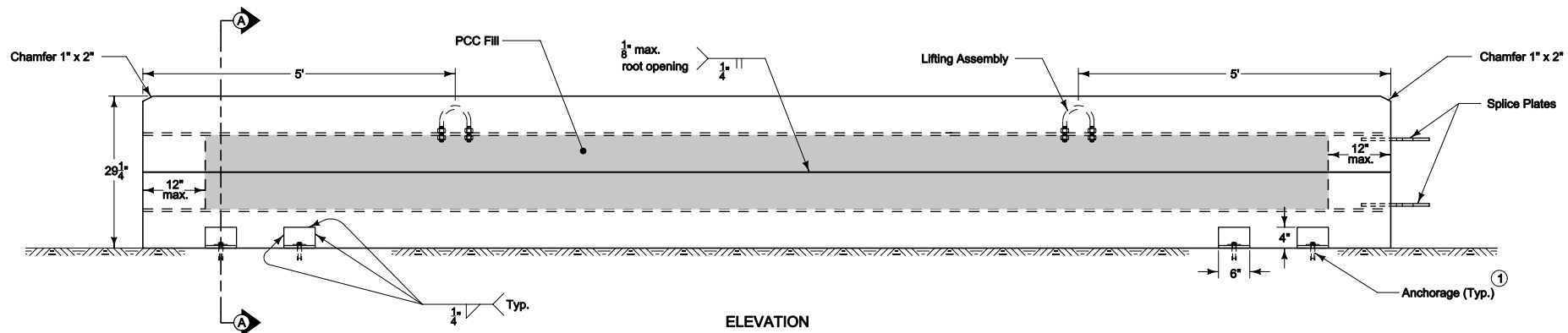
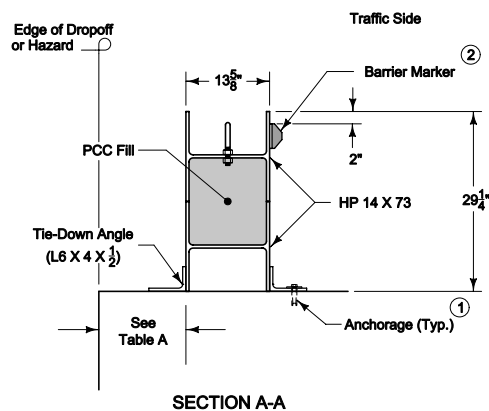


PLAN



ELEVATION



SECTION A-A

Use steel meeting the requirements of ASTM A36.

Use an Iowa DOT Construction Specification mix or a commercial ready-mix with a minimum $f'_c = 2500$ psi. Deposit by a method approved by the Engineer. Limits of the fill shown are approximate and may be rough or slumped depending on the method of bulkheading.

Provide for an approved monitoring schedule with a person on call and available 24 hours a day, each day of the week, to realign barrier which has been struck. Initiate within one hour of notification of need.

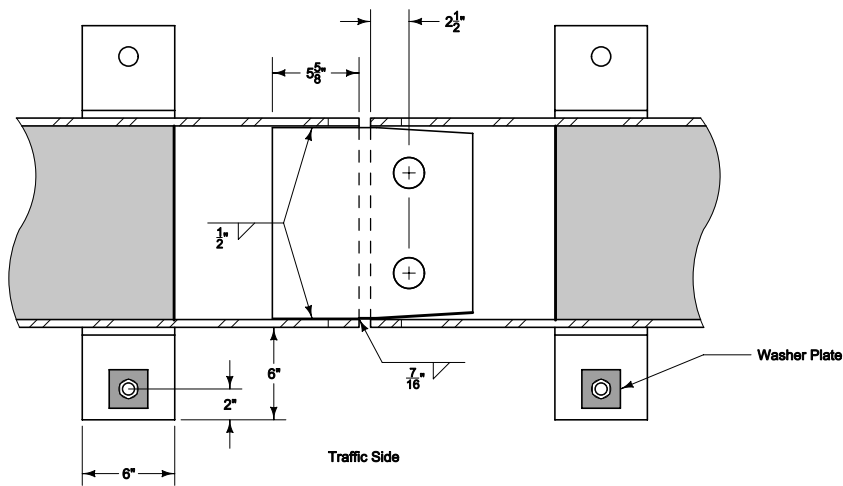
Unless stated otherwise, the barrier rail sections remain the property of the Contractor. Remove from the site upon completion of work.

- ① Anchorage for use on bridge decks or PCC pavement only. When installed in one-way traffic situations use and install anchorage on traffic side of barrier only. Anchorage consisting of a washer plate as shown, a 3/4" dia. x 1 3/4" long ASTM A307 Grade B heavy hex bolt, and a 3/4" Red Head Multi-Set II drop-in anchor (or approved equivalent). Following removal of anchorage, fill all holes with an approved non-shrink grout. The cost of anchorage, when required, is to be in the price bid for "Temporary Barrier Rail, Steel."
- ② Furnish and install Barrier Markers. Place Markers as shown on this sheet and attach to the barrier in a manner approved by the manufacturer. Place Markers to face oncoming traffic. Use a color to match the adjacent edge line. Maintain the markers and promptly repair or replace damaged or missing units. Include all costs for furnishing, installing and maintaining markers in the price bid for "Temporary Barrier Rail, Steel."

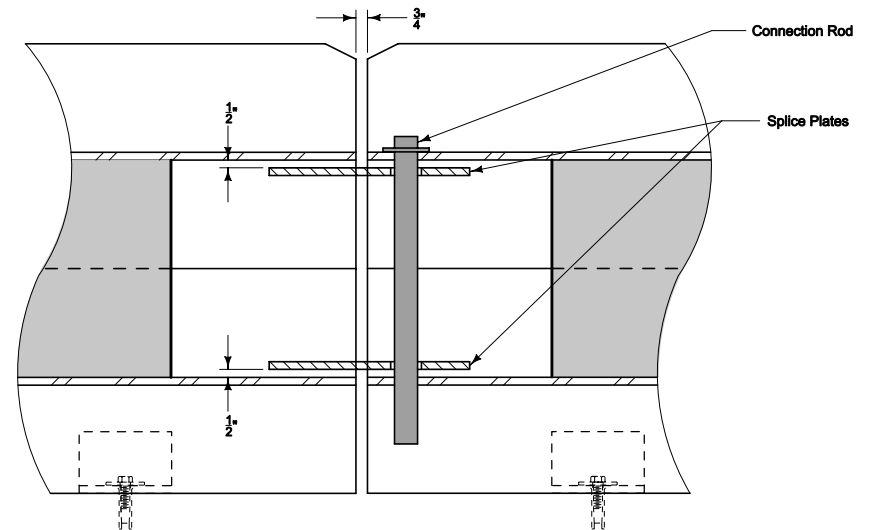
Possible Contract Item:
Temporary Barrier Rail, Steel

Possible Tabulation:
108-33

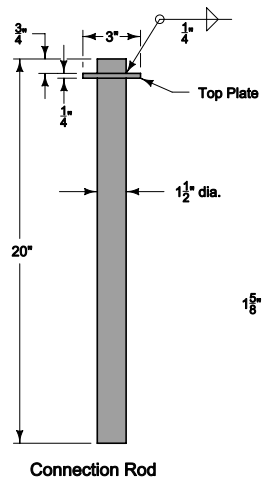
 Iowa Department of Transportation STANDARD ROAD PLAN	REVISION New 04-20-10
	BA-400 SHEET 1 of 2
REVISIONS: New. Replaces RE-89.	
 APPROVED BY DESIGN METHODS ENGINEER	
TEMPORARY BARRIER RAIL (STEEL)	



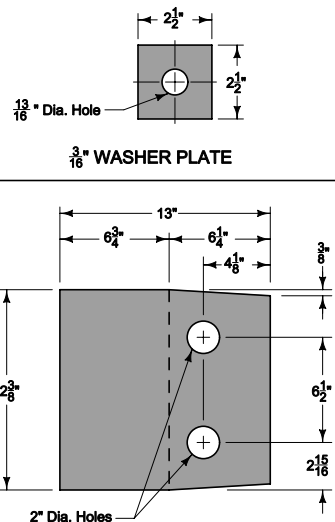
BARRIER CONNECTION
TOP SECTION



BARRIER CONNECTION
SIDE SECTION



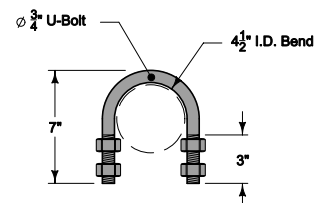
CONNECTION ROD ASSEMBLY



1/2" SPLICE PLATE

TABLE A
ANCHORAGE REQUIREMENTS

Hazard	Dropoff	Min. offset where TBR is Unanchored	Min. offset where TBR is Anchored
Dropoff from pavement	≤ 24"	10"	6"
	> 24"	18"	6"
Dropoff from bridge	≤ 3"	1"	N/A
	> 3"	18"	6"
Fixed vertical object	N/A	10"	6"



LIFTING ASSEMBLY



Iowa Department
of Transportation

STANDARD ROAD PLAN

REVISIONS: New. Replaces RE-89.

Deanna Mifflin
APPROVED BY DESIGN METHODS ENGINEER

**TEMPORARY BARRIER RAIL
(STEEL)**

REVISION
New 04-20-10
BA-400
SHEET 2 of 2