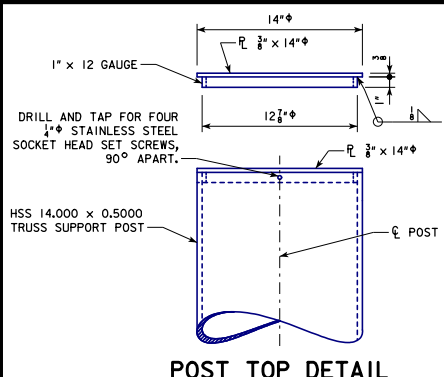
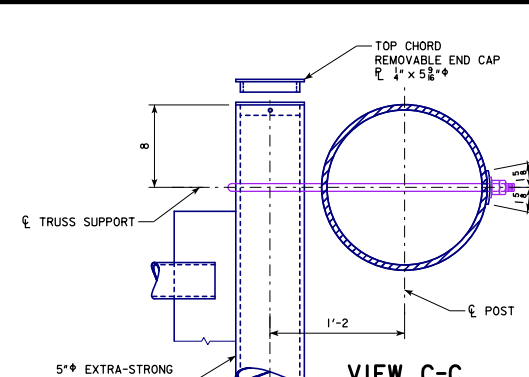


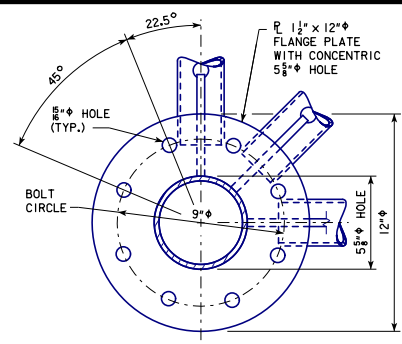
REVISED 07-2017, MODIFIED NOTES, CORRECTED REPLICATIONS OF VIEWS D-D AND E-E TO PROPERLY COINCIDE WITH DETAILS F AND G.  
 REVISED 03-2019, MODIFIED CHORD SPLICE FASTENER NOTE TO ADDRESS CHANGE IN ASTM SPECIFICATIONS. CLARIFIED ACCEPTABLE HARDNESS OF NEOPRENE PAD. UPDATED BRIDGE ENGINEER SIGNATURE.  
 STEELOVERHEADSIGNTRUSS.DGN - SOST-09-11 - THIS SHEET ISSUED 09-2011.



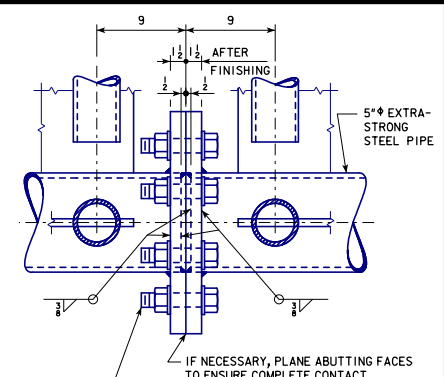
**POST TOP DETAIL**



**VIEW C-C**

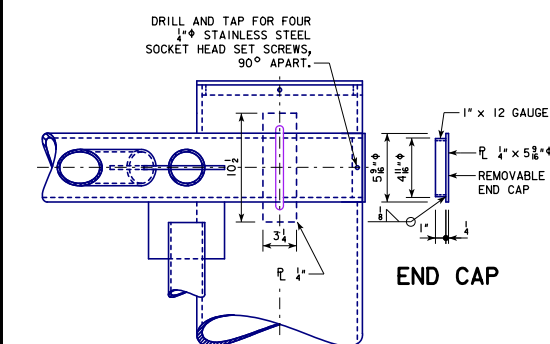


SOME HIDDEN LINES NOT SHOWN FOR CLARITY

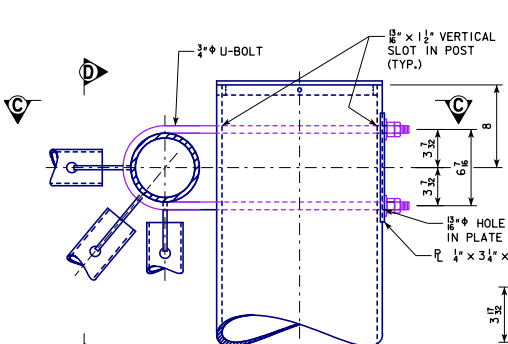


**CHORD SPLICE**

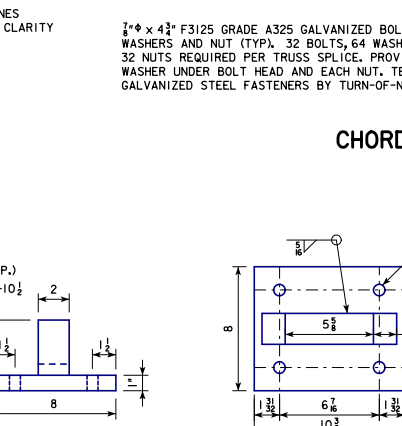
SECURE PROPER ALIGNMENT AFTER FINISHING, THEN WELD FLANGE PLATES TO CHORD MEMBERS.



**END CAP**

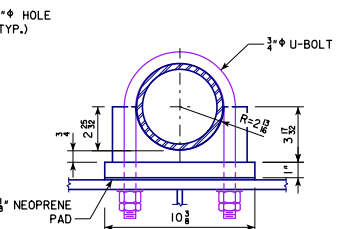


**DETAIL F**

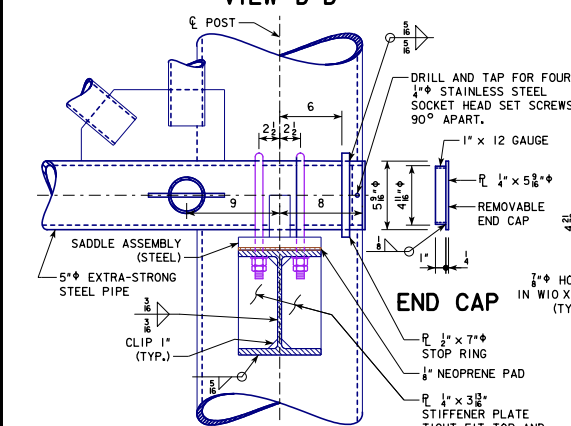


**SADDLE END VIEW**

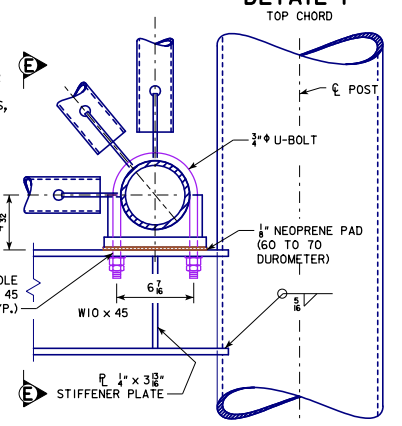
**SADDLE PLAN VIEW**



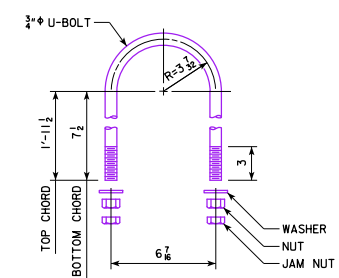
**SADDLE SIDE VIEW**



**END CAP**



**DETAIL G**



**U-BOLT DETAIL**

SEE STANDARD SHEET SOST-06-11 FOR LOCATIONS OF DETAILS F AND G.

09-2019 LATEST REVISION DATE  APPROVED BY BRIDGE ENGINEER	 STANDARD DESIGN <b>STEEL OVERHEAD SIGN TRUSS</b> SEPTEMBER, 2011
	<b>TRUSS SUPPORT AND CHORD SPLICE DETAILS</b> 50'-100' SPANS
	<b>SOST-09-11</b>