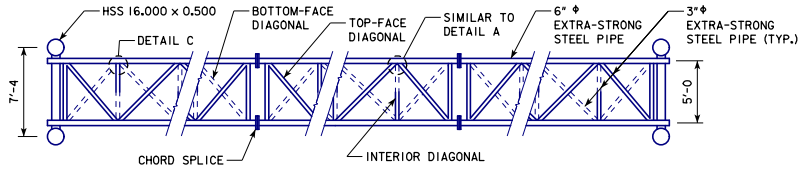


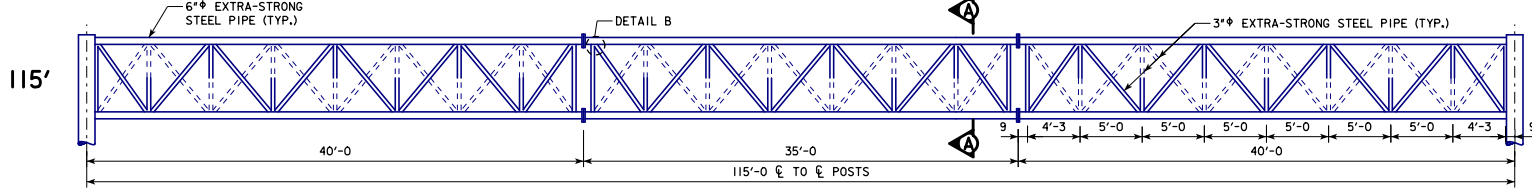
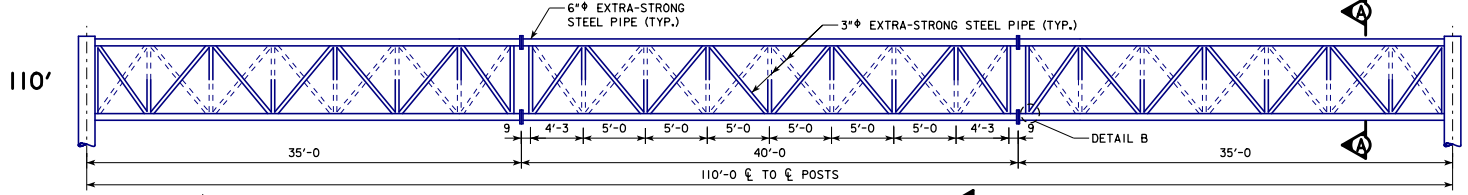
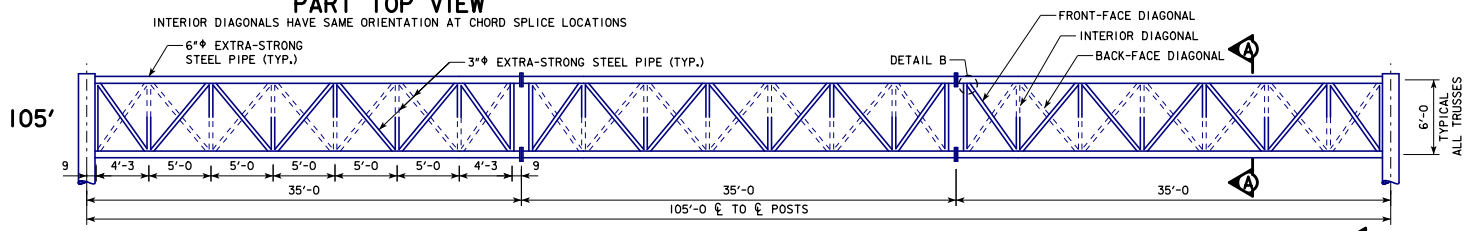
REVISED 07-2017; MODIFIED NOTES. CHANGED CALLOUT "SIMILAR TO DETAIL A" TO CONFORM TO CHANGE OF DETAIL D ON SOST-08-11. REFERENCE TO DETAIL D WAS REMOVED.
 REVISED 03-2019; UPDATED BRIDGE ENGINEER SIGNATURE.
 REVISED 03-2019; UPDATED BRIDGE ENGINEER SIGNATURE.
 STEELOVERHEADSIGNTRUSS.DGN - SOST-04-11 - THIS SHEET ISSUED 09-2011.



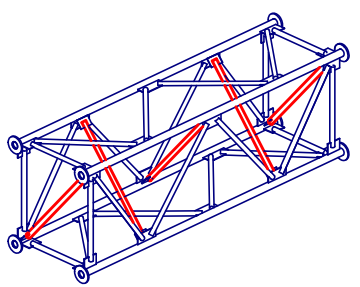
BACK-FACE DIAGONALS AND BOTTOM-FACE DIAGONALS ARE SHOWN WITH DASHED LINES. INTERIOR DIAGONALS ARE SHOWN SOLID NEAR THE FRONT FACE AND TOP FACE. INTERIOR DIAGONALS ARE SHOWN DASHED TOWARDS THE BACK FACE AND BOTTOM FACE.

PART TOP VIEW

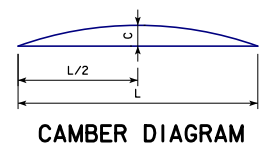
INTERIOR DIAGONALS HAVE SAME ORIENTATION AT CHORD SPLICE LOCATIONS



PART ELEVATION VIEWS
GUSSET PLATES NOT SHOWN

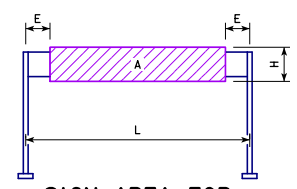


ISOMETRIC VIEW
TYPICAL TRUSS UNIT
INTERIOR DIAGONALS SHOWN IN RED FOR CLARITY

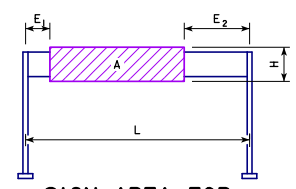


CAMBER DIAGRAM

SPAN L	CAMBER C
105'	2 1/4
110'	2 1/2
115'	2 3/4



SIGN AREA FOR STEEL OVERHEAD SIGN TRUSS
CENTERED



SIGN AREA FOR STEEL OVERHEAD SIGN TRUSS
OFFSET
SIGN OFFSET MAY BE MIRRORED (E₁ AND E₂ VALUES REVERSED).

ALLOWABLE SIGN AREA

CENTERED				
SPAN	MAX. SIGN HEIGHT	MIN. END DIST.		MAX. SIGN AREA
L	H	E		A
105'	19'-0"	27'-6"		950 S.F.
110'	19'-0"	30'-0"		950 S.F.
115'	19'-0"	32'-6"		950 S.F.
105'	14'-9"	20'-6"		944 S.F.
110'	14'-9"	23'-0"		944 S.F.
115'	14'-9"	25'-6"		944 S.F.
105'	12'-0"	13'-0"		948 S.F.
110'	12'-0"	15'-6"		948 S.F.
115'	12'-0"	18'-0"		948 S.F.

OFFSET				
SPAN	MAX. SIGN HEIGHT	MIN. LEFT END DIST.	MIN. RIGHT END DIST.	MAX. SIGN AREA
L	H	E ₁	E ₂	A
105'	19'-0"	10'-0"	62'-0"	627 S.F.
105'	19'-0"	15'-0"	54'-0"	684 S.F.
110'	19'-0"	10'-0"	68'-0"	608 S.F.
110'	19'-0"	15'-0"	60'-0"	665 S.F.
115'	19'-0"	10'-0"	73'-0"	608 S.F.
115'	19'-0"	15'-0"	66'-0"	646 S.F.
105'	14'-9"	10'-0"	48'-0"	693 S.F.
105'	14'-9"	15'-0"	37'-0"	782 S.F.
110'	14'-9"	10'-0"	54'-0"	679 S.F.
110'	14'-9"	15'-0"	45'-0"	738 S.F.
115'	14'-9"	10'-0"	61'-0"	649 S.F.
115'	14'-9"	15'-0"	51'-0"	723 S.F.
105'	12'-0"	10'-0"	27'-0"	816 S.F.
110'	12'-0"	10'-0"	36'-0"	768 S.F.
115'	12'-0"	10'-0"	45'-0"	720 S.F.
115'	12'-0"	15'-0"	29'-0"	852 S.F.

SEE STANDARD SHEET SOST-08-11 FOR SECTION A-A AND DETAILS A, B AND C.

03-2019
 LATEST REVISION DATE

 APPROVED BY BRIDGE ENGINEER



STANDARD DESIGN

STEEL OVERHEAD SIGN TRUSS

SEPTEMBER, 2011

ELEVATION VIEWS FOR TRUSS SPANS
 105'-115' SPANS

SOST-04-11