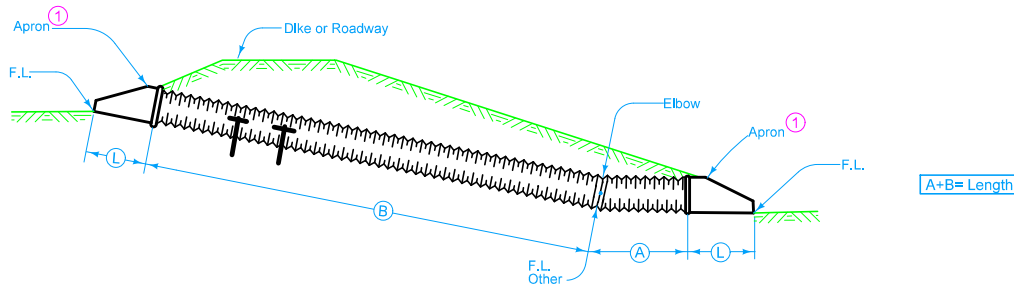
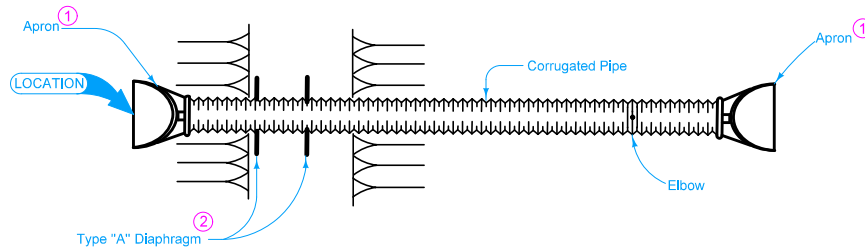


Standard type joint couplings are required. See [Materials I.M. 441](#).

- ① Refer to the following:  
[DR-203](#) for the circular metal,  
[DR-204](#) for arch metal.
- ② See [DR-501](#). If more than one diaphragm is specified, install 15 feet apart or as specified.

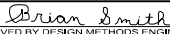


SECTION



PLAN

Possible Tabulation:  
104-3

<b>IOWA DOT</b>	REVISION	
	1	04-18-17
<b>STANDARD ROAD PLAN</b>		<b>DR-631</b>
		SHEET 1 of 1
REVISIONS: Modified note 1 to include references to additional apron types.		
 APPROVED BY DESIGN METHODS ENGINEER		
<b>CORRUGATED PIPE CULVERT          LETDOWN STRUCTURE          WITH SINGLE ELBOW</b>		