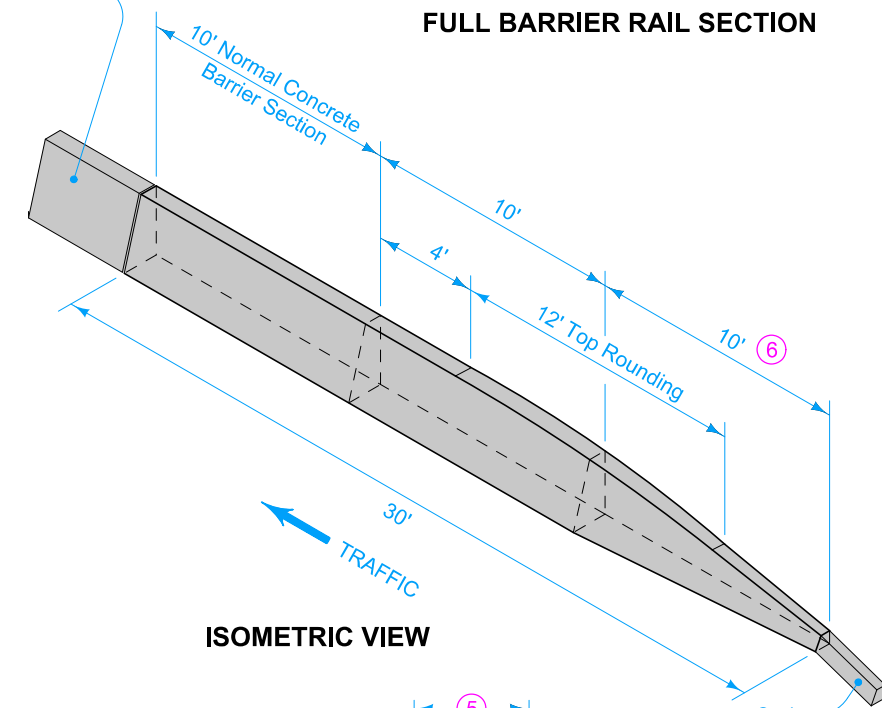
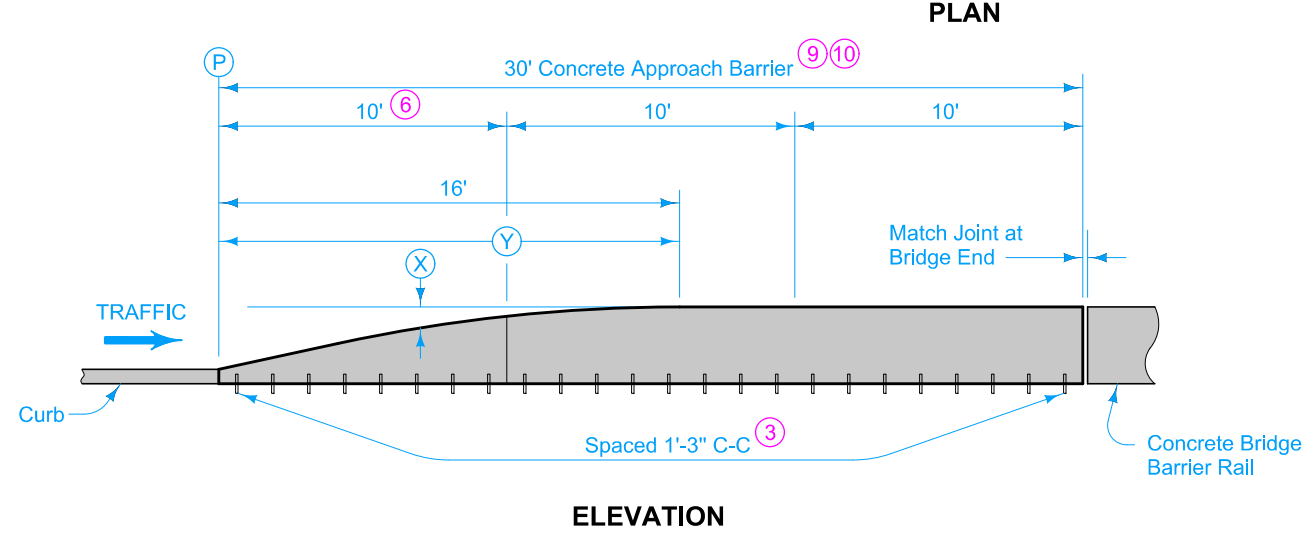
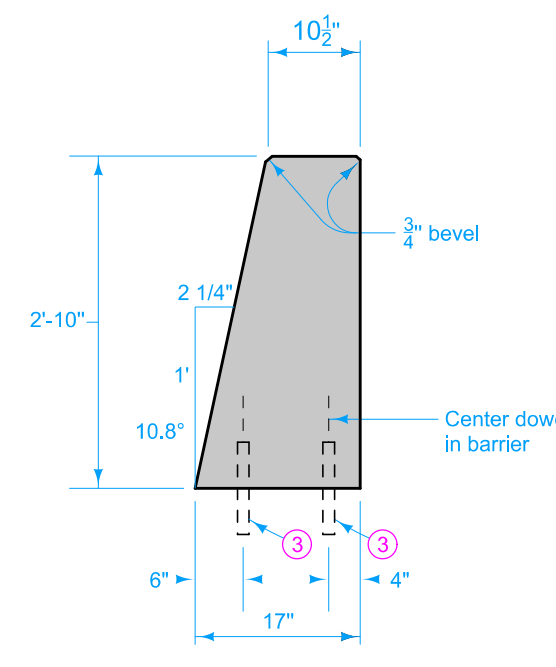
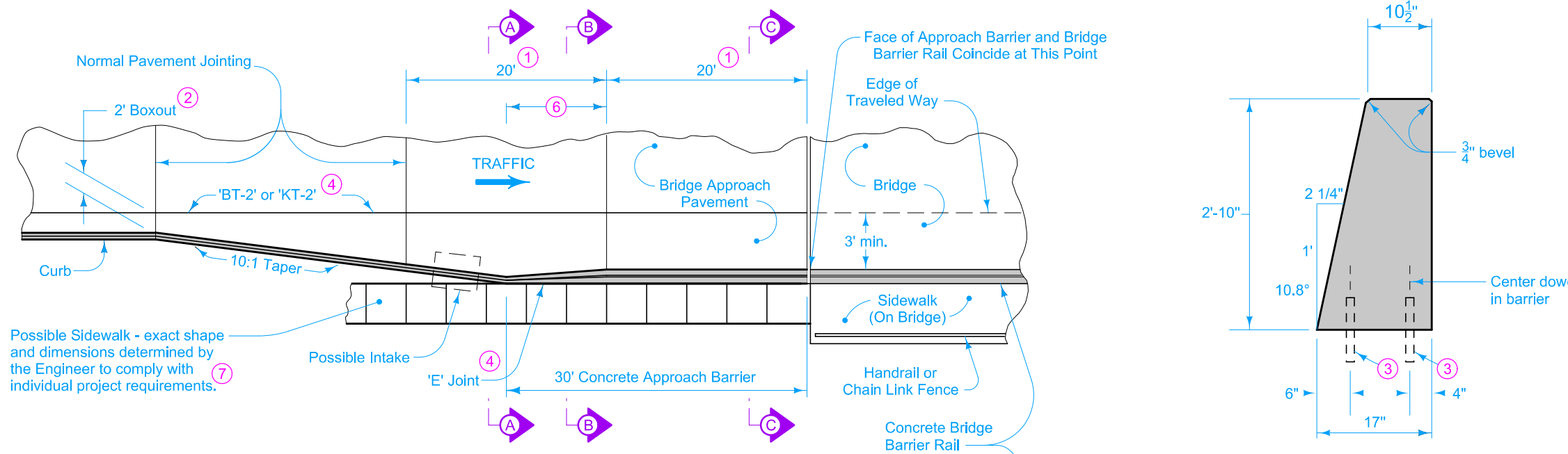
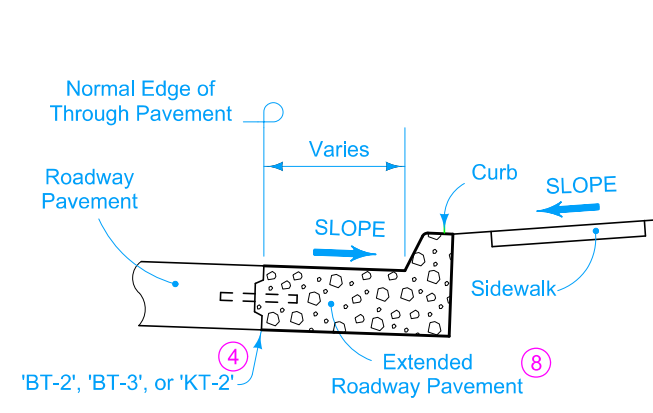


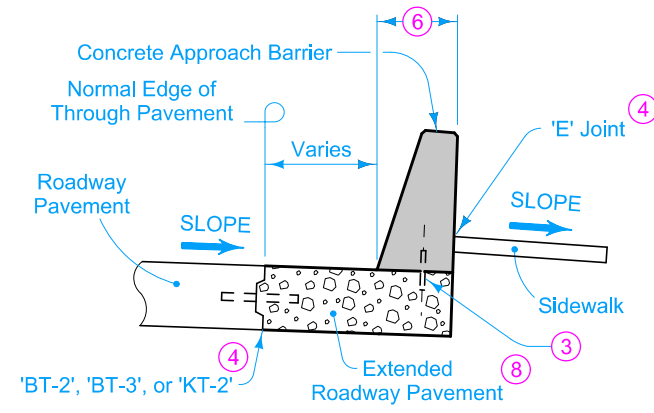
DESIGNER INFORMATION



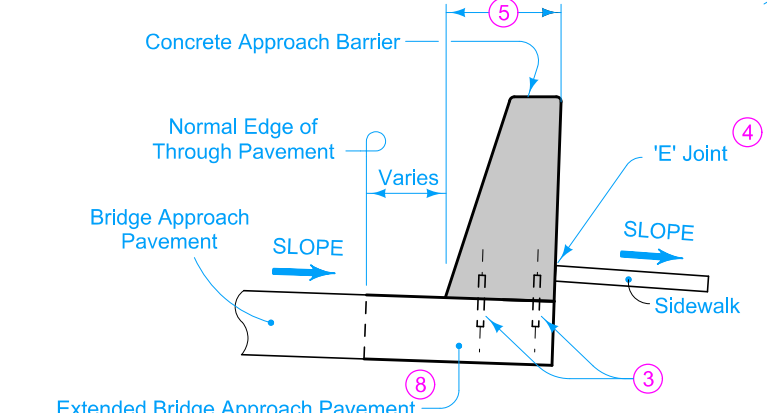
OFFSETS FOR ROUNDED BARRIER TOP																	
Y = Distance from (P)	ft.	1.0	2.0	3.0	4.0	5.0	6.0	7.0	8.0	9.0	10.0	11.0	12.0	13.0	14.0	15.0	16.0
X = Offset to Rounded Top	ft.	2.13	1.91	1.70	1.48	1.26	1.06	0.87	0.70	0.54	0.42	0.30	0.20	0.12	0.06	0.02	0.00



SECTION A-A



SECTION B-B



SECTION C-C

Install a 'C' joint in concrete approach barrier to match the location of each joint in both roadway and bridge approach pavement.

- ① Typical joint spacing and location. Follow specific project requirements as directed by the Engineer.
- ② Match boxout width to existing curb and gutter joint. Use 2 foot wide boxout where curb and gutter are not constructed.
- ③ #8 x 8 inch deformed bars or 1 inch diameter smooth.
- ④ For joint detail, see PV-101.
- ⑤ Bottom width of barrier is maintained at 17 inches.
- ⑥ Bottom width of barrier transitions from 8 to 17 inches.
- ⑦ Required sidewalk will be measured and paid for separately.
- ⑧ Additional concrete quantity required for extended roadway pavement will be included in roadway paving quantity.
- ⑨ Place no delineator or object marker in front of, or on, the barrier.
- ⑩ Approximately 3 cubic yards of concrete are required to construct barrier as shown. Amount may vary depending on individual site requirements.

Possible Contract Item:
Concrete Barrier, Tapered End, BA-108

Possible Tabulation:
108-18B

	REVISION	
	3	10-18-22
<h2>STANDARD ROAD PLAN</h2>		<h1>BA-108</h1>
SHEET 1 of 1		
REVISIONS: Changed from F-shape to Texas single slope, Change dowel placement		
APPROVED BY DESIGN METHODS ENGINEER		
<h3>CONCRETE BARRIER TAPERED END SECTION</h3>		