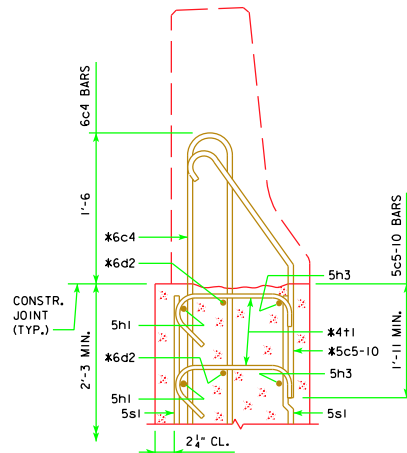


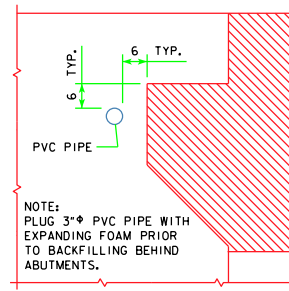
NOTE:
PLUG 3" PVC PIPE WITH
EXPANDING FOAM PRIOR
TO BACKFILLING BEHIND
ABUTMENTS.



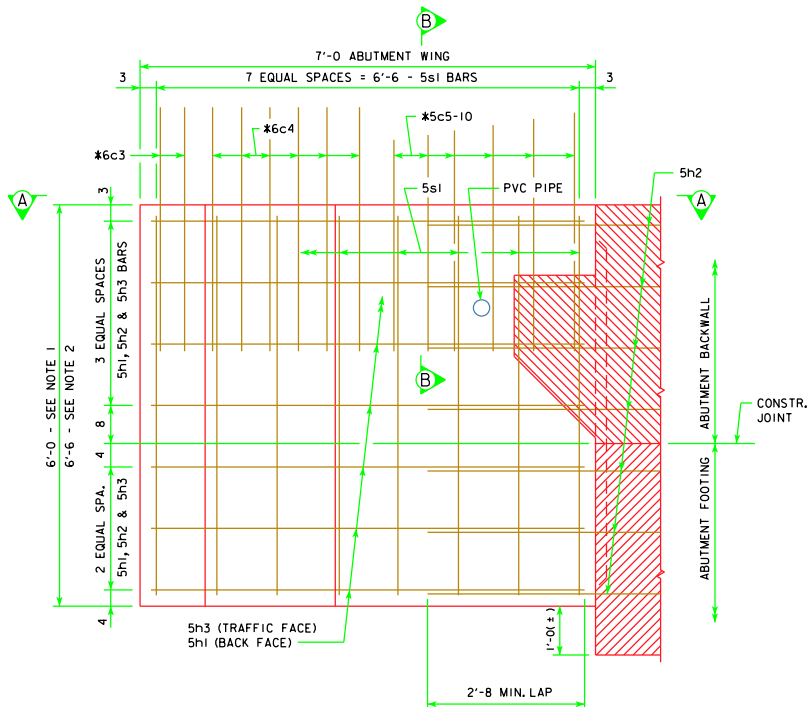
SECTION B-B

* BARRIER RAIL END SECTION
BARS TO BE PLACED WITH
ABUTMENT WING.

SEE END SECTION DETAILS ON
SHEET RS40-089-10 FOR DETAILS
OF BARRIER RAIL END SECTION.
REINFORCING BARS 6c3, 6c4,
5c5-10, 6d2 & 4+1 ARE
INCLUDED IN THE
SUPERSTRUCTURE QUANTITIES.



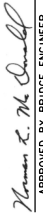

PVC PIPE LOCATION



ABUTMENT WING - ELEVATION VIEW

NOTE:

1. USE FOR BRIDGES 160'-0 THRU 200'-0.
2. USE FOR BRIDGES 220'-0 THRU 320'-0.
3. REINFORCING STEEL QUANTITY AND CONCRETE QUANTITY ARE INCLUDED IN THE SUPERSTRUCTURE QUANTITIES SHOWN ELSEWHERE IN THESE PLANS.

LATEST REVISION DATE	 APPROVED BY BRIDGE ENGINEER	 Iowa Department of Transportation Highway Division	
		STANDARD DESIGN - 40' ROADWAY, 3 SPAN BRIDGES ROLLED STEEL BEAM BRIDGES JUNE, 2010	
		ABUTMENT WING DETAILS BRIDGES 160'-0 - 320'-0	RS40-029-10