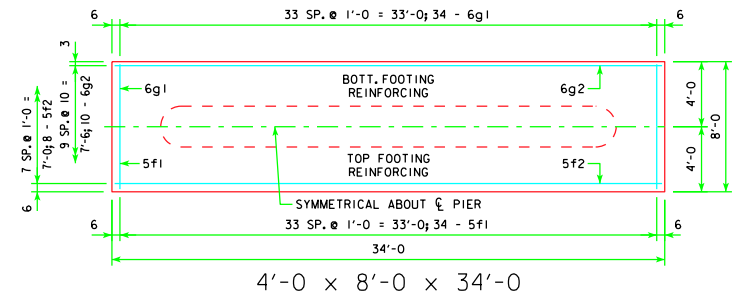
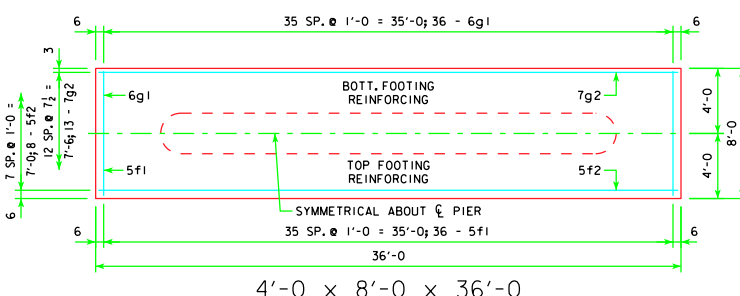


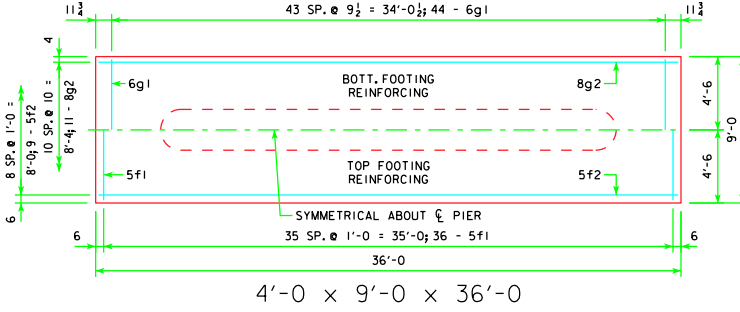
4'-0 x 7'-0 x 34'-0



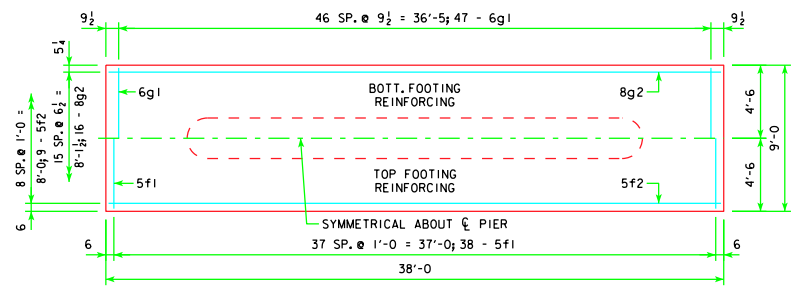
4'-0 x 8'-0 x 34'-0



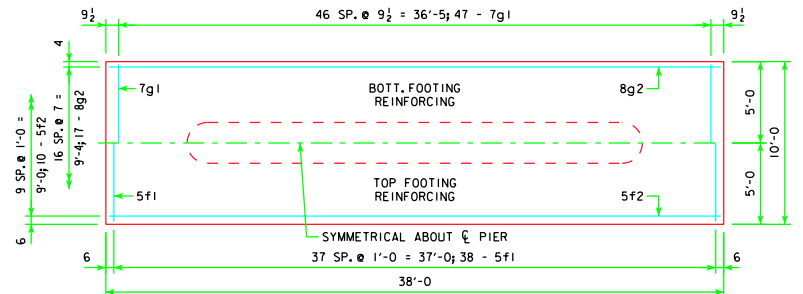
4'-0 x 8'-0 x 36'-0



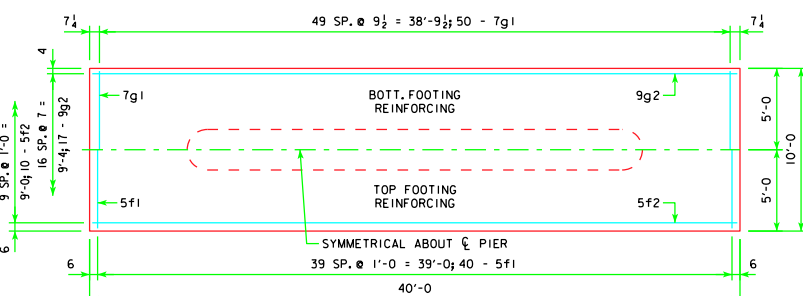
4'-0 x 9'-0 x 36'-0



4'-0 x 9'-0 x 38'-0



4'-0 x 10'-0 x 38'-0



4'-0 x 10'-0 x 40'-0

NOTE:
SEE SHEET RS40-164-10 FOR FOOTING NOTES.



STANDARD DESIGN - 40' ROADWAY, 3 SPAN BRIDGES
ROLLED STEEL BEAM BRIDGES

JUNE, 2010

TEE PIER - SPREAD
FOOTINGS
45° SKEW - SHEET 2

RS40-165-10

LATEST REVISION DATE	
APPROVED BY BRIDGE ENGINEER	<i>Thomas E. McDaniel</i>