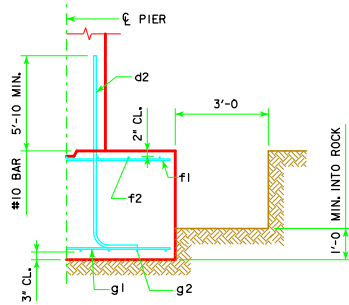
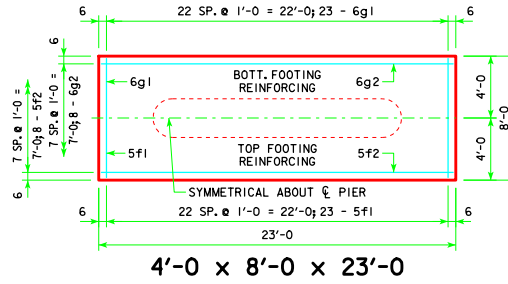


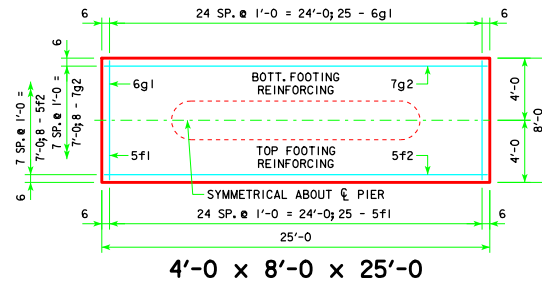
H IN FT.	FT.	℄ - ℄ ABUT. BRG.	FOOTING SIZE
28 TO 30	138'-10 151'-4 163'-10 176'-4 188'-10 201'-4 213'-10 226'-4 243'-0	4' x 8' x 23' 4' x 8' x 25' 4' x 9' x 25' 4' x 9' x 27'	
31 TO 33	138'-10 151'-4 163'-10 176'-4 188'-10 201'-4 213'-10 226'-4 243'-0	4' x 8' x 23' 4' x 8' x 25' 4' x 9' x 25' 4' x 9' x 27'	
34 TO 36	138'-10 151'-4 163'-10 176'-4 188'-10 201'-4 213'-10 226'-4 243'-0	4' x 9' x 25' 4' x 9' x 27' 4' x 10' x 27'	
37 TO 40	138'-10 151'-4 163'-10 176'-4 188'-10 201'-4 213'-10 226'-4 243'-0	4' x 9' x 25' 4' x 9' x 27' 4' x 10' x 27'	



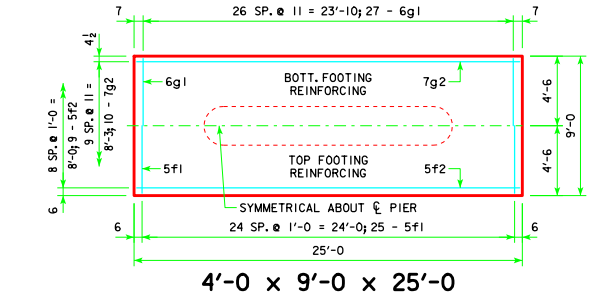
TYPICAL SECTION



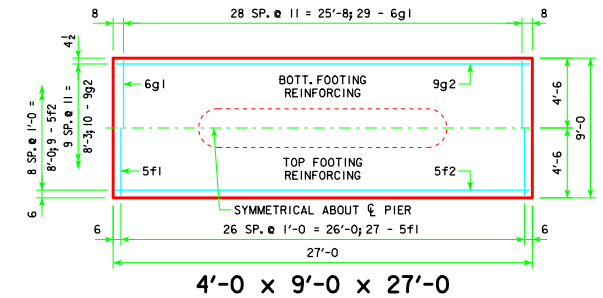
4'-0 x 8'-0 x 23'-0



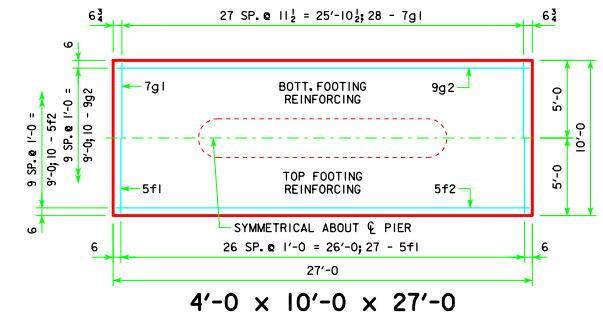
4'-0 x 8'-0 x 25'-0



4'-0 x 9'-0 x 25'-0



4'-0 x 9'-0 x 27'-0

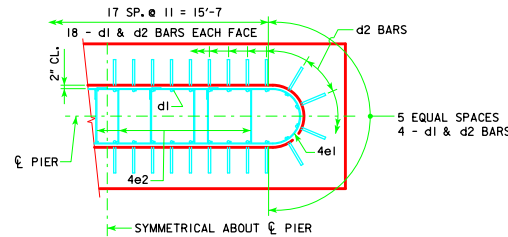


4'-0 x 10'-0 x 27'-0

FOOTING NOTES:

THESE SPREAD FOOTINGS ARE DESIGNED AND DETAILED TO BE USED WITH THE CAP AND COLUMN DETAILS OF THE TEE PIERS AS SHOWN ON SHEET H30-57-06.

THESE SPREAD FOOTINGS SHALL EXTEND AT LEAST 12 INCHES INTO SUITABLE FOUNDATION ROCK AND THE LAST 12 INCHES OF ROCK EXCAVATION SHALL BE TO NEAT LINES OF MASONRY. THE FOUNDATION ROCK SHALL HAVE A MINIMUM LRFD NOMINAL BEARING RESISTANCE OF 30 KIPS PER SQUARE FOOT (ALLOWABLE SERVICE LOAD BEARING VALUE OF AT LEAST 10 KIPS PER SQUARE FOOT).



d2 LAYOUT  
(SEE SECTION A-A ON SHEET H30-71-06.)

NOTE: D = PIN DIAMETER.  
DIMENSIONS ARE OUT TO OUT.

FOOTING SIZE	REINFORCING STEEL (ONE FOOTING)				TOTAL WEIGHT (LB.)	STRUCTURAL CONCRETE (CY)
	BAR	NO., SIZE & SPACING	LENGTH	WEIGHT (LB.)		
4' x 8' x 23'	d2	44 - #10 AS SHOWN	11'-4	2146	3056	27.3
	f1	23 - #5 @ 1'-0	7'-8	184		
	f2	8 - #5 @ 1'-0	22'-8	189		
	g1	23 - #6 @ 1'-0	7'-8	265		
	g2	8 - #6 @ 1'-0	22'-8	272		
4' x 8' x 25'	d2	44 - #10 AS SHOWN	11'-4	2146	3243	29.6
	f1	25 - #5 @ 1'-0	7'-8	200		
	f2	8 - #5 @ 1'-0	24'-8	206		
	g1	25 - #6 @ 1'-0	7'-8	288		
	g2	8 - #7 @ 1'-0	24'-8	403		
4' x 9' x 25'	d2	44 - #10 AS SHOWN	11'-4	2146	3459	33.3
	f1	25 - #5 @ 1'-0	8'-8	226		
	f2	9 - #5 @ 1'-0	24'-8	232		
	g1	27 - #6 @ 0'-11	8'-8	351		
	g2	10 - #7 @ 0'-11	24'-8	504		
4' x 9' x 27'	d2	44 - #10 AS SHOWN	11'-4	2146	3925	36.0
	f1	27 - #5 @ 1'-0	8'-8	244		
	f2	9 - #5 @ 1'-0	26'-8	250		
	g1	29 - #6 @ 0'-11	8'-8	378		
	g2	10 - #9 @ 0'-11	26'-8	907		
4' x 10' x 27'	d2	44 - #10 AS SHOWN	11'-4	2146	4156	40.0
	f1	27 - #5 @ 1'-0	9'-8	272		
	f2	10 - #5 @ 1'-0	26'-8	278		
	g1	28 - #7 @ 0'-11 1/2	9'-8	553		
	g2	10 - #9 @ 1'-0	26'-8	907		

LATEST REVISION DATE  
04-13

APPROVED BY BRIDGE ENGINEER  
*Thomas E. M. Dwyer*

**Iowa Department of Transportation**  
Highway Division

STANDARD DESIGN - 30' ROADWAY, THREE SPAN BRIDGES

**PRETENSIONED PRESTRESSED  
CONCRETE BEAM BRIDGES**

DECEMBER, 2006

**H30-77-06**

**TEE PIER - SPREAD  
FOOTINGS**

30° SKEW - H=25' to 40'