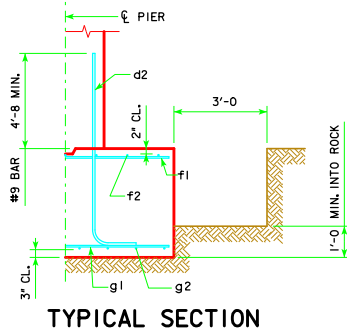
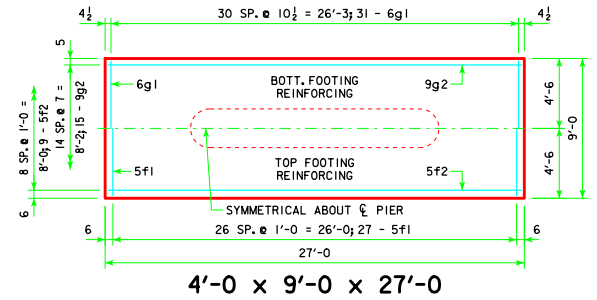
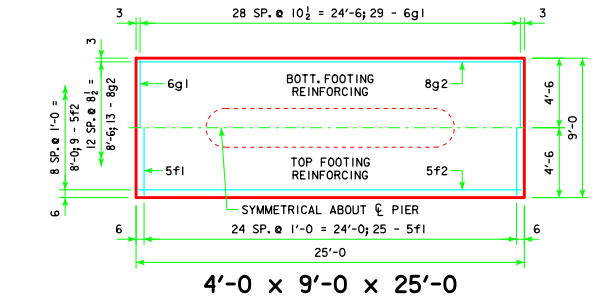
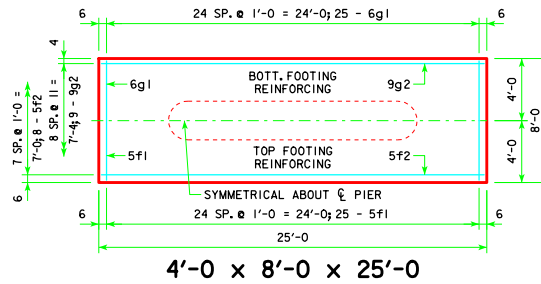
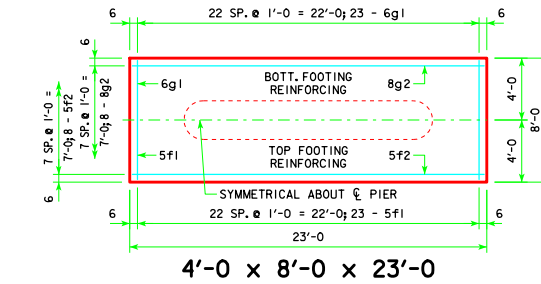
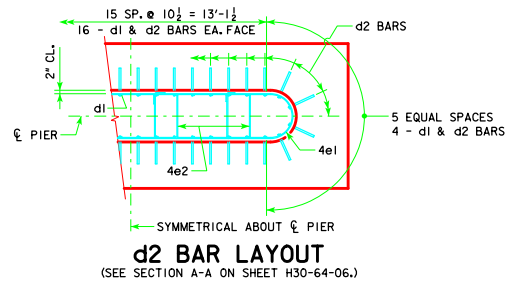


REVISED 04-13 - FOOTING NOTES MODIFIED.

H IN FT.	℄ ABUT. BRG.	FOOTING SIZE
25 TO 27	138'-10 151'-4 163'-10 176'-4	4' x 8' x 23'
28 TO 30	188'-10 201'-4 213'-10 226'-4 243'-0	4' x 8' x 25'
31 TO 33	138'-10 151'-4 163'-10 176'-4	4' x 9' x 25'
34 TO 36	188'-10 201'-4 213'-10 226'-4 243'-0	4' x 9' x 27'
37 TO 40	138'-10 151'-4 163'-10 176'-4 188'-10 201'-4 213'-10 226'-4 243'-0	4' x 9' x 25'



FOOTING SIZE	REINFORCING STEEL (ONE FOOTING)				STRUCTURAL CONCRETE (CY)	
	BAR	NO., SIZE & SPACING	LENGTH	WEIGHT (LB.)		
4' x 8' x 23'	d2	40 - #9 AS SHOWN	9'-11	1349	2471	27.3
	f1	23 - #5 @ 1'-0	7'-8	184		
	f2	8 - #5 @ 1'-0	22'-8	189		
	g1	23 - #6 @ 1'-0	7'-8	265		
4' x 8' x 25'	g2	8 - #8 @ 1'-0	22'-8	484	2798	29.6
	d2	40 - #9 AS SHOWN	9'-11	1349		
	f1	25 - #5 @ 1'-0	7'-8	200		
	f2	8 - #5 @ 1'-0	24'-8	206		
4' x 9' x 25'	g1	25 - #5 @ 1'-0	7'-8	288	3041	33.3
	g2	9 - #9 @ 0'-11	24'-8	755		
	d2	40 - #9 AS SHOWN	9'-11	1349		
	f1	25 - #5 @ 1'-0	8'-8	226		
4' x 9' x 27'	f2	9 - #5 @ 1'-0	24'-8	232	3607	36.0
	g1	29 - #6 @ 1'-0	8'-8	378		
	g2	13 - #8 @ 0'-8	24'-8	856		
	d2	40 - #9 AS SHOWN	9'-11	1349		
	f1	27 - #5 @ 1'-0	8'-8	244		
	f2	9 - #5 @ 1'-0	26'-8	250		
	g1	31 - #6 @ 1'-0	8'-8	404		
	g2	15 - #9 @ 0'-7	26'-8	1360		



FOOTING NOTES:

THESE SPREAD FOOTINGS ARE DESIGNED AND DETAILED TO BE USED WITH THE CAP AND COLUMN DETAILS OF THE TEE PIERS AS SHOWN ON SHEET H30-57-06.

THESE SPREAD FOOTINGS SHALL EXTEND AT LEAST 12 INCHES INTO SUITABLE FOUNDATION ROCK AND THE LAST 12 INCHES OF ROCK EXCAVATION SHALL BE TO NEAT LINES OF MASONRY. THE FOUNDATION ROCK SHALL HAVE A MINIMUM LRFD NOMINAL BEARING RESISTANCE OF 30 KIPS PER SQUARE FOOT (ALLOWABLE SERVICE LOAD BEARING VALUE OF AT LEAST 10 KIPS PER SQUARE FOOT).

LATEST REVISION DATE 04-13	APPROVED BY BRIDGE ENGINEER <i>Thomas E. M. D...ell</i>	Iowa Department of Transportation Highway Division	
		STANDARD DESIGN - 30' ROADWAY, THREE SPAN BRIDGES PRETENSIONED PRESTRESSED CONCRETE BEAM BRIDGES DECEMBER, 2006	
TEE PIER - SPREAD FOOTINGS 15° SKEW - H=25' to 40'		H30-70-06	