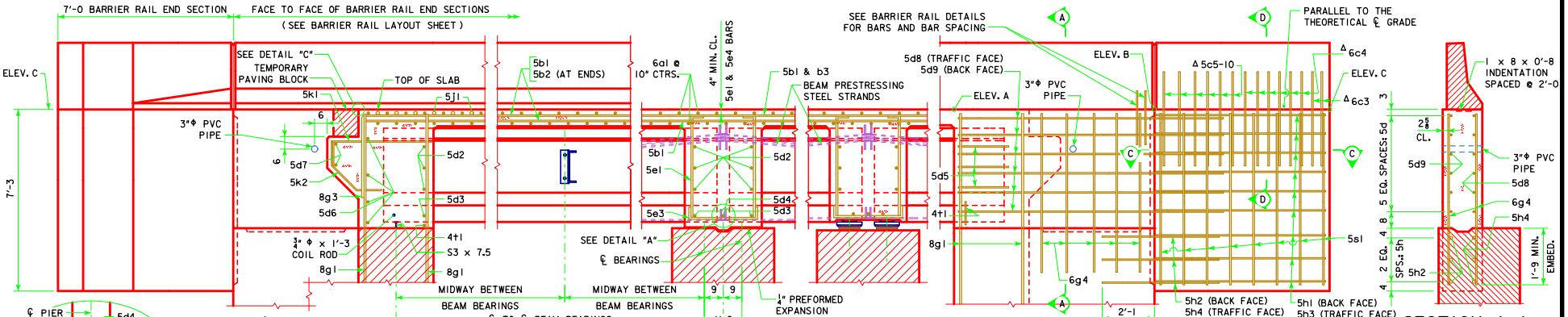
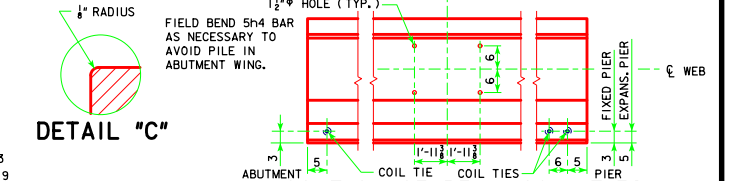


NOTE: BRIDGE IS SYMMETRICAL ABOUT $\bar{\bar{C}}$

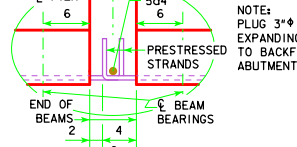


PART LONGITUDINAL SECTION NEAR GUTTER
(FOR DETAILS OF INTERMEDIATE DIAPHRAGM SEE SHEET H30-38-06)

PART END VIEW AT ABUTMENT
PROVIDE ELEVATIONS A, B AND C IN THE BRIDGE PLAN SHEETS.
1 1/2" ϕ HOLE (TYP.)

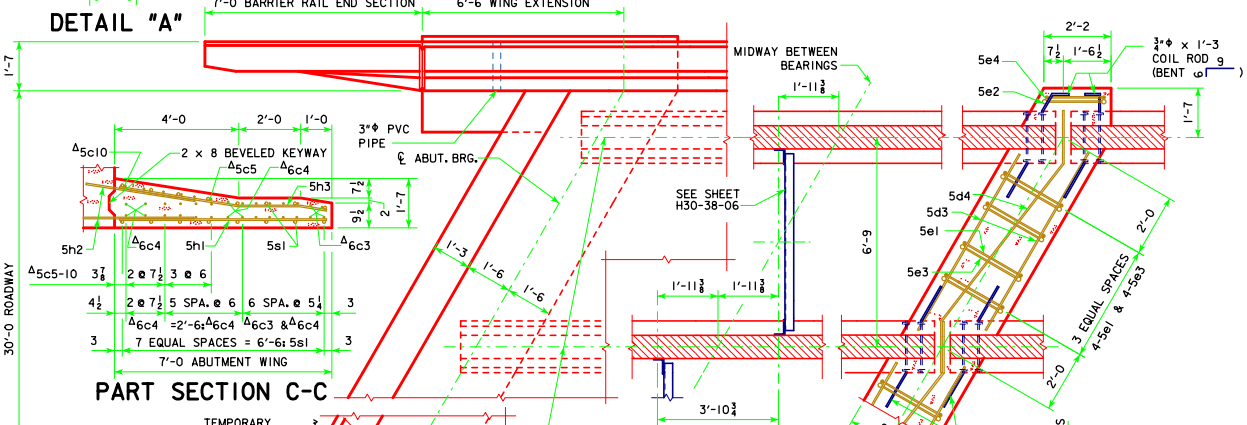


SECTION A-A



DETAIL "A"

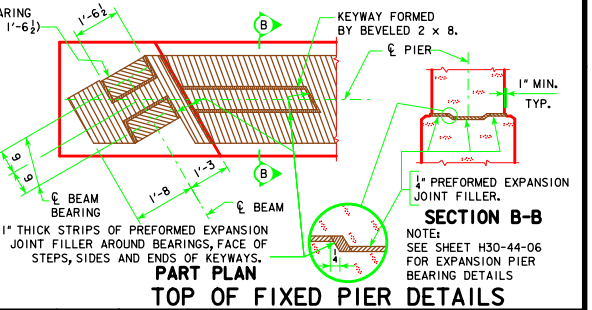
DETAIL "C"



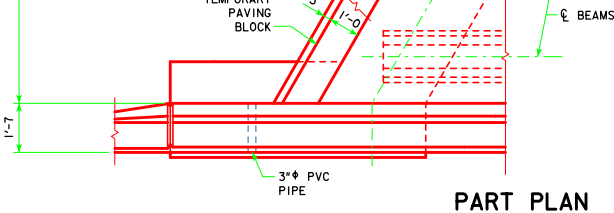
PART SECTION C-C

PART SECTION AT PIER

LOCATION OF BEAM COIL TIES AND STEEL DIAPHRAGM BOLT HOLES



PART PLAN TOP OF FIXED PIER DETAILS



PART PLAN

NOTE: SEE END SECTION DETAILS IN THESE PLANS FOR DETAILS OF BARRIER RAIL END SECTION. REINFORCING BARS 6c3, 6c4, 5c5-10, 6d2 & 4t1 ARE INCLUDED IN THE SUPERSTRUCTURE QUANTITIES.

SECTION D-D

LATEST REVISION DATE 01-12 APPROVED BY BRIDGE ENGINEER 	 STANDARD DESIGN - 30' ROADWAY, THREE SPAN BRIDGES PRETENSIONED PRESTRESSED CONCRETE BEAM BRIDGES DECEMBER, 2006	H30-21-06
	LONGITUDINAL SECTION 30° SKEW C BEAMS	

REVISED 01-12 - ADDED FIELD BEND 5h4 BAR TO AVOID PILE IN ABUTMENT WING NOTE.