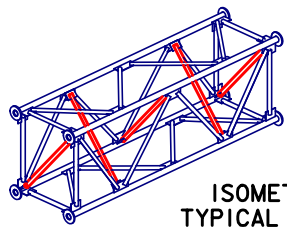


SPAN L	CAMBER C
120'	3
125'	3 1/4
130'	3 1/2

NOTES:
 BACK-FACE DIAGONALS AND BOTTOM-FACE DIAGONALS ARE SHOWN WITH DASHED LINES. INTERIOR DIAGONALS ARE SHOWN SOLID NEAR THE FRONT FACE AND TOP FACE. INTERIOR DIAGONALS ARE SHOWN DASHED TOWARDS THE BACK FACE AND BOTTOM FACE.

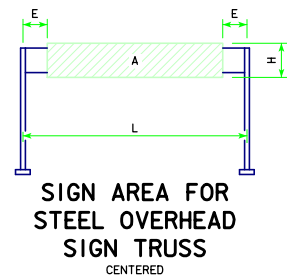
PART ELEVATION VIEWS
 GUSSET PLATES NOT SHOWN



ISOMETRIC VIEW
 TYPICAL TRUSS UNIT

ALLOWABLE SIGN AREA

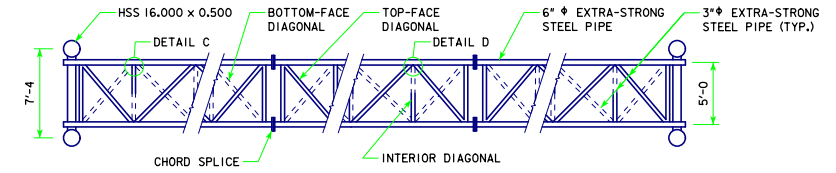
CENTERED				
SPAN	MAX. SIGN HEIGHT	MIN. END DIST.		MAX. SIGN AREA
L	H	E		A
120'	19'-0	35'-0		950 S.F.
125'	19'-0	37'-6		950 S.F.
130'	19'-0	40'-0		950 S.F.
120'	14'-9	28'-0		944 S.F.
125'	14'-9	30'-6		944 S.F.
130'	14'-9	33'-0		944 S.F.
120'	12'-0	20'-6		948 S.F.
125'	12'-0	23'-0		948 S.F.
130'	12'-0	25'-6		948 S.F.



SIGN AREA FOR
 STEEL OVERHEAD
 SIGN TRUSS
 CENTERED

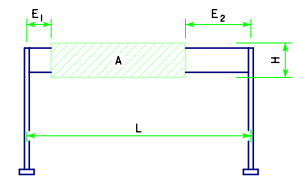
ALLOWABLE SIGN AREA

OFFSET				
SPAN	MAX. SIGN HEIGHT	MIN. LEFT END DIST.	MIN. RIGHT END DIST.	MAX. SIGN AREA
L	H	E ₁	E ₂	A
120'	19'-0	10'-0	79'-0	589 S.F.
120'	19'-0	20'-0	64'-0	684 S.F.
125'	19'-0	10'-0	84'-0	589 S.F.
125'	19'-0	20'-0	70'-0	665 S.F.
130'	19'-0	10'-0	90'-0	570 S.F.
130'	19'-0	20'-0	75'-0	665 S.F.
120'	14'-9	10'-0	67'-0	634 S.F.
120'	14'-9	20'-0	48'-0	767 S.F.
125'	14'-9	10'-0	72'-0	634 S.F.
125'	14'-9	20'-0	55'-0	738 S.F.
130'	14'-9	10'-0	78'-0	620 S.F.
130'	14'-9	20'-0	62'-0	708 S.F.
120'	12'-0	10'-0	51'-0	708 S.F.
120'	12'-0	20'-0	23'-0	924 S.F.
125'	12'-0	10'-0	58'-0	684 S.F.
125'	12'-0	20'-0	34'-0	852 S.F.
130'	12'-0	10'-0	65'-0	660 S.F.
130'	12'-0	20'-0	43'-0	804 S.F.



PART TOP VIEW

NOTE: INTERIOR DIAGONALS HAVE SAME ORIENTATION AT CHORD SPLICE LOCATIONS



SIGN AREA FOR
 STEEL OVERHEAD
 SIGN TRUSS

NOTE: SIGN OFFSET MAY BE MIRRORED (E₁ AND E₂ VALUES REVERSED).

NOTE: SEE STANDARD SHEET SOST-08-11 FOR SECTION A-A AND DETAILS A, B, C AND D.

LATEST REVISION DATE	<i>Thomas E. McQuinn</i> APPROVED BY BRIDGE ENGINEER		
		STANDARD DESIGN	
		STEEL OVERHEAD SIGN TRUSS SEPTEMBER, 2011	
		ELEVATION VIEWS FOR TRUSS SPANS 120'-130' SPANS	SOST-05-11