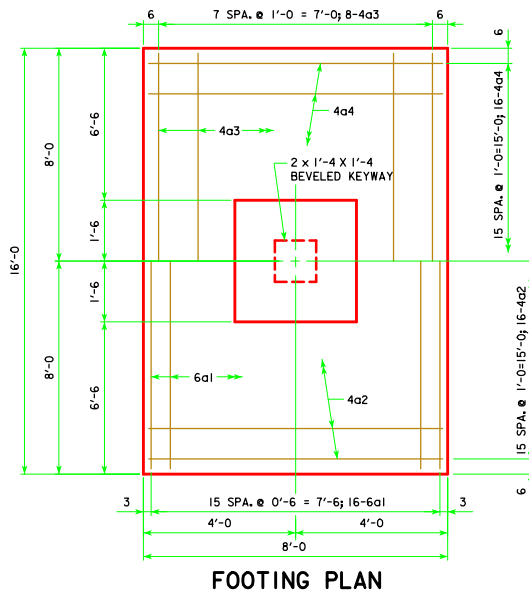
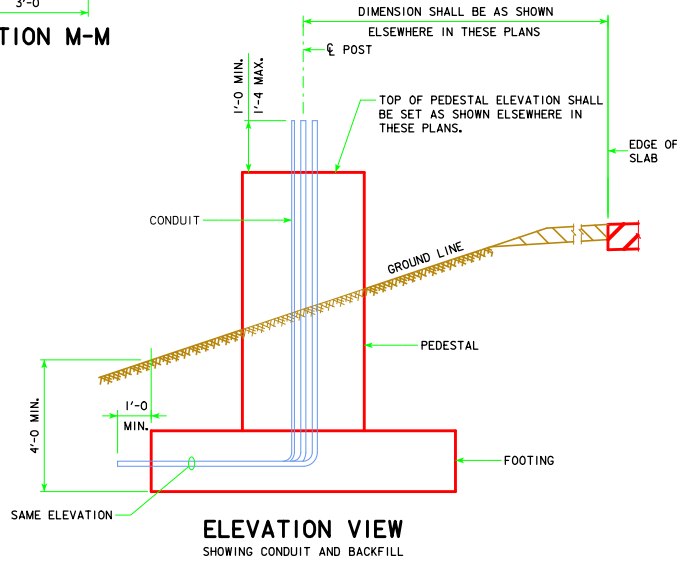
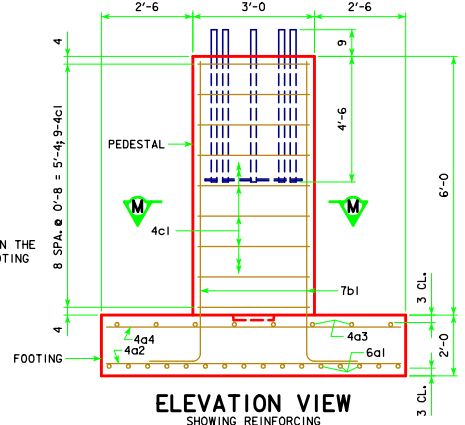
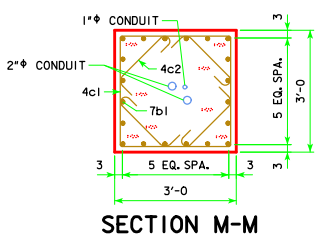
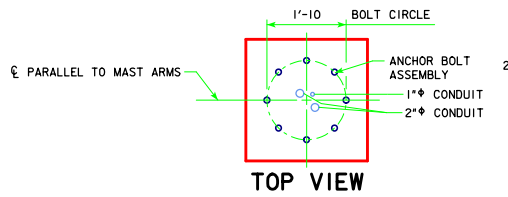


ROADSIDE DMS SUPPORT.DGN - RDMS-05-13 - THIS SHEET ISSUED 04-13.



**TOP REINFORCING STEEL**

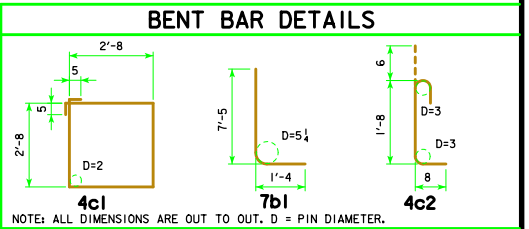
**BOTTOM REINFORCING STEEL**

**CONCRETE PLACEMENT QUANTITIES**  
(ONE FOUNDATION)

PEDESTAL	2.0
FOOTING	9.5
<b>TOTAL - CU. YDS.</b>	<b>11.5</b>

**EPOXY-COATED REINFORCING BAR LIST**

BAR	LOCATION	SHAPE	NO.	LENGTH	WEIGHT
6a1	FOOTING BOT., LONGIT.	—	16	15'-8	377
4a2	FOOTING BOT., TRANSV.	—	16	7'-8	82
4a3	FOOTING TOP, LONGIT.	—	8	15'-8	84
4a4	FOOTING TOP, TRANSV.	—	16	7'-8	82
7b1	FOOTING-TO-PEDESTAL DOWEL	L	20	8'-9	358
4c1	PEDESTAL HOOPS	□	9	11'-6	69
4c2	PEDESTAL TIES	L	36	2'-10	68
<b>REINFORCING STEEL - EPOXY COATED TOTAL (LBS.)</b>					<b>1120</b>



**ANCHOR BOLT NOTES:**

ALL ANCHOR BOLT MATERIAL AND GALVANIZING SHALL BE IN ACCORDANCE WITH ARTICLE 4187.01, C.3 OF THE STANDARD SPECIFICATIONS.

THE ANCHOR BOLT ASSEMBLY SHALL BE PROPERLY ALIGNED AT THE CENTER OF PEDESTAL AND SECURELY WIRED IN PLACE BEFORE CONCRETE IS PLACED.

BENDING OR WELDING OF ANCHOR BOLTS SHALL NOT BE ALLOWED.

THE COST OF FURNISHING AND INSTALLING ANCHOR BOLT ASSEMBLIES AND RODENT GUARDS SHALL BE INCLUDED IN THE PRICE BID FOR "STRUCTURAL CONCRETE (MISCELLANEOUS)" AND NO SEPARATE PAYMENT WILL BE MADE.

CONTRACT ITEMS FOR ROADSIDE DYNAMIC MESSAGE SIGN SUPPORT FOUNDATION CONSTRUCTION ARE:  
 REINFORCING STEEL, EPOXY COATED - POUNDS  
 STRUCTURAL CONCRETE (MISCELLANEOUS) - CUBIC YARDS  
 EXCAVATION - CUBIC YARDS OF CLASS SPECIFIED

**ESTIMATED FOUNDATION QUANTITIES**  
(ONE FOUNDATION)

ITEM	UNIT	QUANTITY
STRUCTURAL CONCRETE (MISCELLANEOUS)	CU. YDS.	11.5
REINFORCING STEEL-EPOXY COATED	LBS.	1120

LATEST REVISION DATE	
	STANDARD DESIGN <b>ROADSIDE DYNAMIC MESSAGE SIGN (DMS) SUPPORT</b> APRIL, 2013
	<b>FOUNDATION DETAILS</b> <b>RDMS-05-13</b>