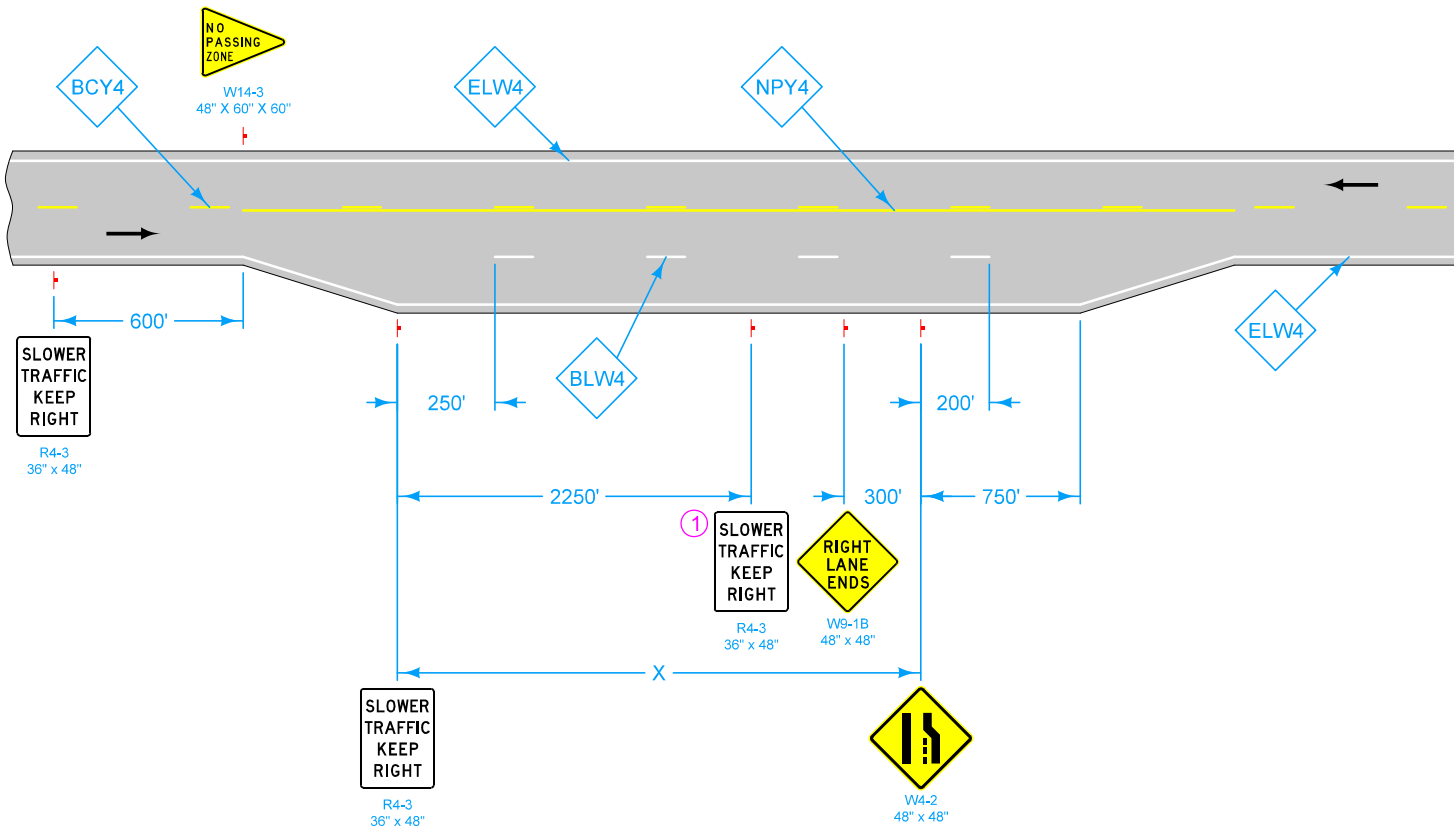


For line information, see [PM-110](#).

① If distance X is less than 3000 feet, omit last R4-3 sign. If distance X is greater than 5250 feet, place R4-3 signs at 2250 foot intervals.



SLOWER TRAFFIC KEEP RIGHT
R4-3
36" x 48"

① SLOWER TRAFFIC KEEP RIGHT
R4-3
36" x 48"

RIGHT LANE ENDS
W9-1B
48" x 48"

CLIMBING LANE
W4-2
48" x 48"

SLOWER TRAFFIC KEEP RIGHT
R4-3
36" x 48"

LEGEND	
←	Direction of Traffic
BCY4	Broken Centerline (Yellow)
BLW4	Broken Lane Line (White)
ELW4	Edge Line Right (White)
NPY4	No Passing Zone Line (Yellow)

Possible Contract Item:
Pavement Marking Line Items
Type 'A' Signs

Possible Tabulation:
108-22

	REVISION
	New 04-17-12
STANDARD ROAD PLAN	PM-221
REVISIONS: New. Layout from Traffic Safety Manual.	SHEET 1 of 1
 APPROVED BY DESIGN METHODS ENGINEER	
CLIMBING LANE	