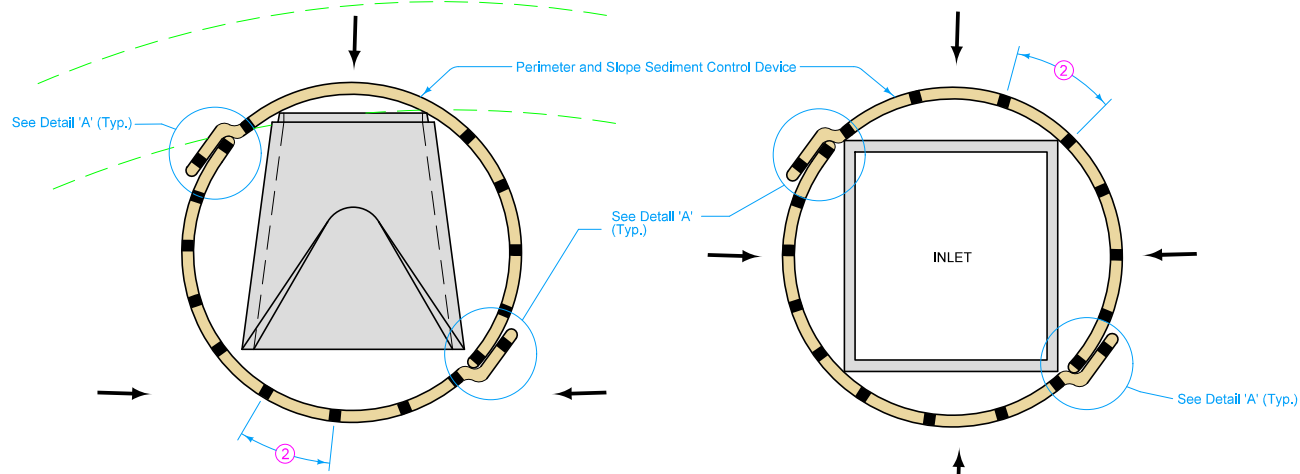
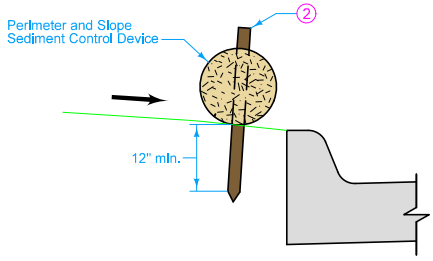


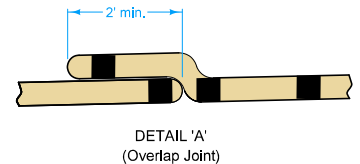
PERIMETER CONTROL



INLET PERIMETER PROTECTION



PERIMETER CONTROL ALONG CURB



DETAIL 'A' (Overlap Joint)

LEGEND	
	Contour Lines
	Flow
	Wood Stake ²

Not intended for use in perennial or intermittent streams.

Ensure ground surface is smooth in order to provide continuous contact with Perimeter and Slope Sediment Control Device. Minor ground shaping may be required. Minor ground shaping is incidental to Perimeter and Slope Sediment Control Device.

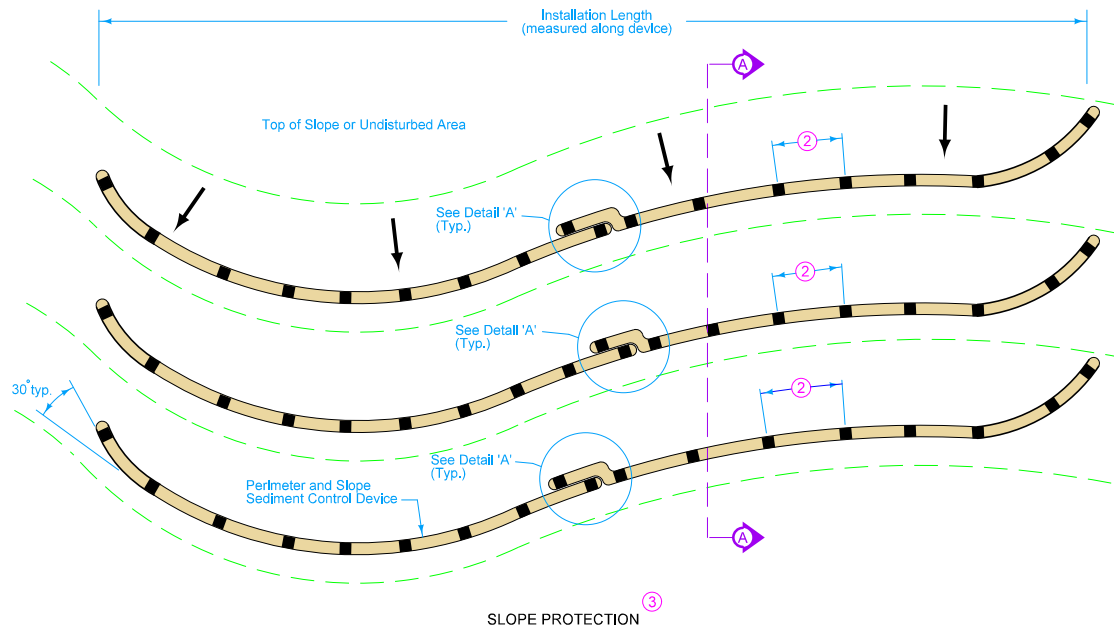
- 1 Place devices continuously up to 60 feet. Overlap joints per Detail 'A'. Extra material required to install overlaps will not be included in the installation length. Turn the lower 10 feet of each run up the slope to help contain runoff. When placed such that runoff is conveyed along the device, additional run-ups and/or means may be required to reduce erosion along the device. Run-ups will be included in the installation length.
- 2 Space stakes as follows:
 - Filter socks, dia. < 18": 1" X 2" wood stakes at 10 foot maximum spacing.
 - Filter socks, dia. 18" or larger: 2" X 2" wood stakes at 10 foot maximum spacing.
 - Wood Excelsior Logs and Straw Wattles: 1" X 1" wood stakes at 4 foot maximum spacing.

Filter Sock Equivalency Table	
Filter Sock Diameter	Wood Excelsior Log or Straw Wattle Diameter
8 inch	9 inch
12 inch	12 inch
18 inch	20 inch

Possible Contract Item:
Perimeter and Slope Sediment Control Device

Possible Tabulation:
100-19

	REVISION
	1 04-21-15
STANDARD ROAD PLAN	EC-204
REVISIONS: Modified circle notes 1, 2, 3, and 4.	SHEET 1 of 3
 APPROVED BY DESIGN METHODS ENGINEER	
PERIMETER AND SLOPE SEDIMENT CONTROL DEVICES	



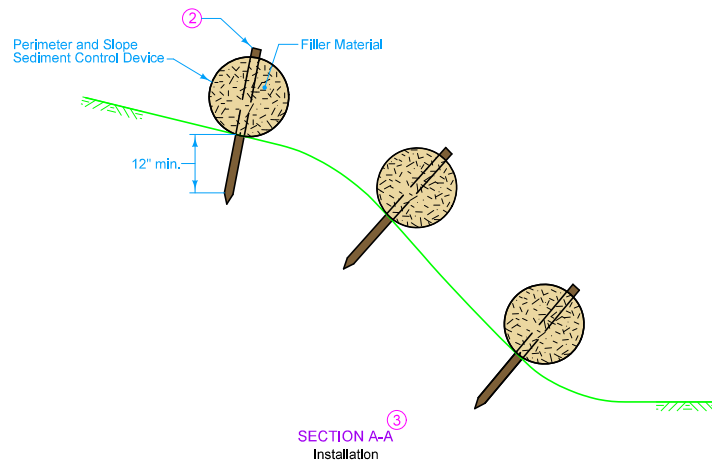
② Space stakes as follows:

Filter Socks, dia. < 18": 1" X 2" wood stakes at 10 foot maximum spacing.

Filter Socks, dia. 18" or larger: 2" X 2" wood stakes at 10 foot maximum spacing.

Wood Excelsior Logs and Straw Wattles: 1" X 1" wood stakes at 4 foot maximum spacing.

③ Install Slope Protection perpendicular to slope (parallel to contours). Overlap joints per Detail 'A'. Extra material required to install overlaps will not be included in the installation length. Run the last 10 feet of each device up the slope to prevent flow runaround. Run-ups will be included in the installation length.



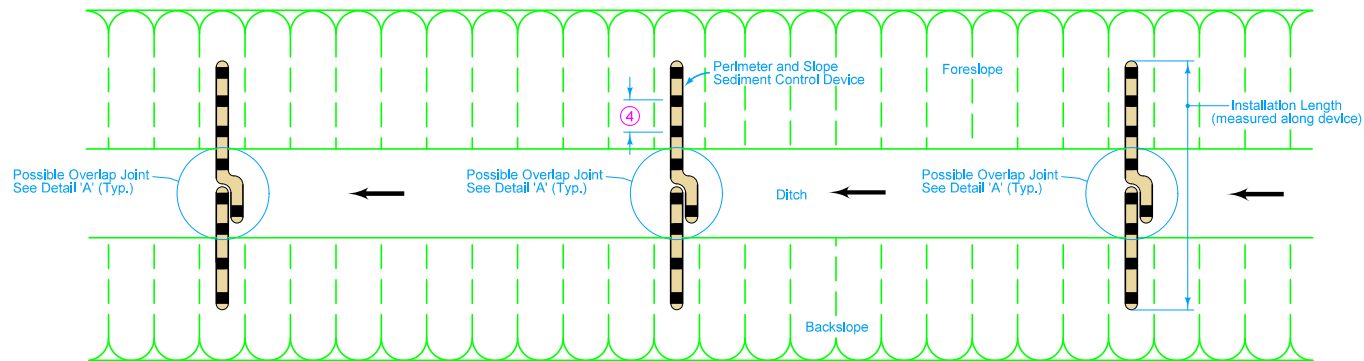
	REVISION
	1 04-21-15
STANDARD ROAD PLAN	EC-204
	SHEET 2 of 3
<small>REVISIONS: Modified circle notes 1, 2, 3, and 4.</small>	
<small>APPROVED BY DESIGN METHODS ENGINEER</small>	
PERIMETER AND SLOPE SEDIMENT CONTROL DEVICES	

④ Space stakes as follows:

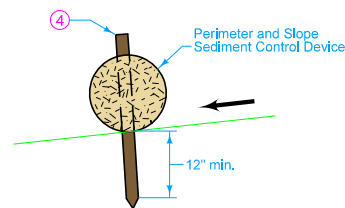
Filter Socks, dia. < 18": 1" X 2" wood stakes at 5 foot maximum spacing.

Filter Socks, dia. 18" or larger: 2" X 2" wood stakes at 5 foot maximum spacing.

Wood Excelsior and Straw Wattles: 1" X 1" wood stakes at 2 foot maximum spacing.



DITCH PROTECTION



INSTALLATION IN DITCH

	REVISION	
	1	04-21-15
STANDARD ROAD PLAN		EC-204
		SHEET 3 of 3
REVISIONS: Modified circle notes 1, 2, 3, and 4.		
 APPROVED BY DESIGN METHODS ENGINEER		
PERIMETER AND SLOPE SEDIMENT CONTROL DEVICES		