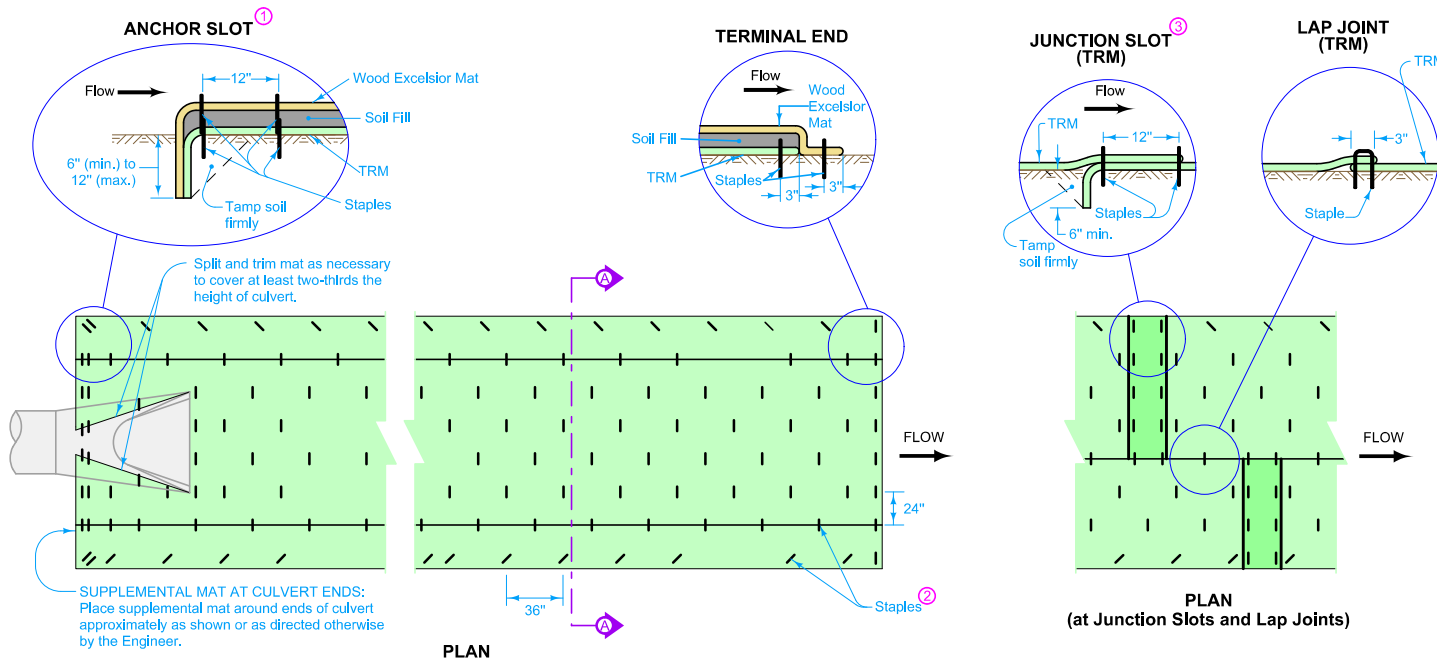


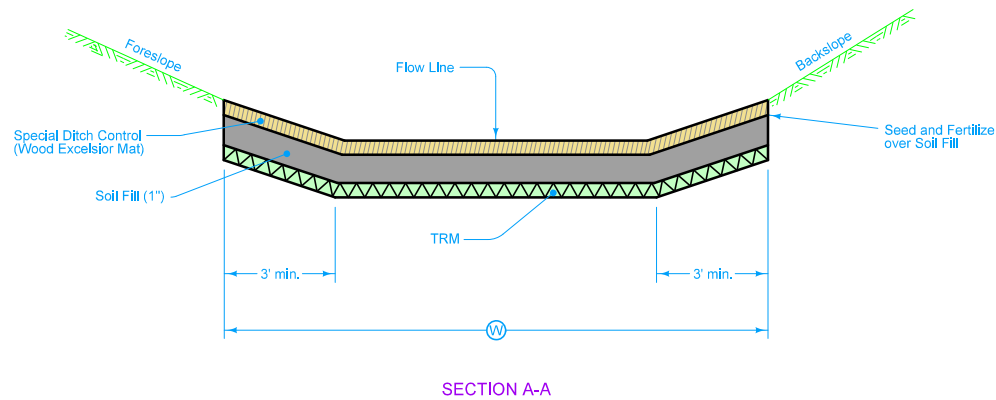
Refer to [EC-101](#) for Special Ditch Control (Wood Excelsior Mat).



- ① Install anchor slot at the beginning (upstream end) of all mat installations.
- ② Place staples alternately in rows approximately 24 inches apart. Approximately 30 staples required per square (100 sq. ft.) of each type of mat.
- ③ Stagger Junction Slots.

Possible Contract Items:
Turf Reinforcement Mat

Possible Tabulation:
100-22



	REVISION
	New 04-21-15
STANDARD ROAD PLAN	EC-104
	SHEET 1 of 1
REVISIONS: New.	
 APPROVED BY DESIGN METHODS ENGINEER	
TURF REINFORCEMENT MAT (TRM)	