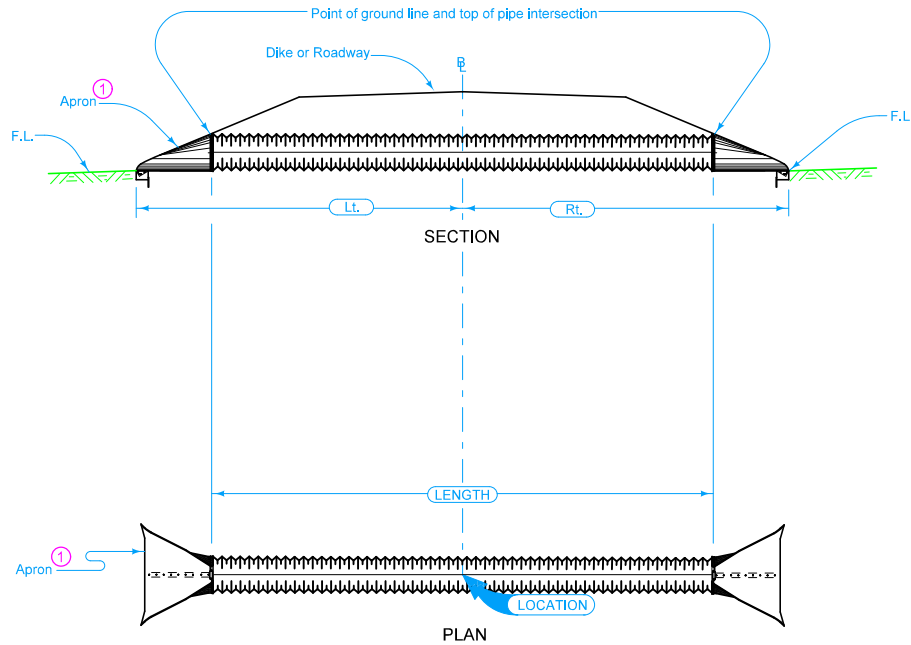


$\Phi$  is  $\Phi$  of roadway, dike, survey, or other as detailed on plans.

Skew angle is the angle which one end of the pipe is ahead (by stationing) of line perpendicular to the  $\Phi$ .  
(Example: skew Rt. ahead 30 degrees)

① See DR-201 for concrete, DR-203 for metal.



Possible Tabulation:  
104-3

<b>IOWA DOT</b>	REVISION
	New 04-21-15
<b>STANDARD ROAD PLAN</b>	<b>DR-651</b>
REVISIONS: New. Replaces Detail 1601.	SHEET 1 of 1
<i>Brian Smith</i> APPROVED BY DESIGN METHODS ENGINEER	
<b>UNCLASSIFIED PIPE CULVERT</b>	