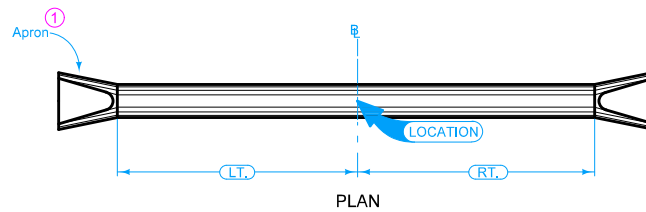
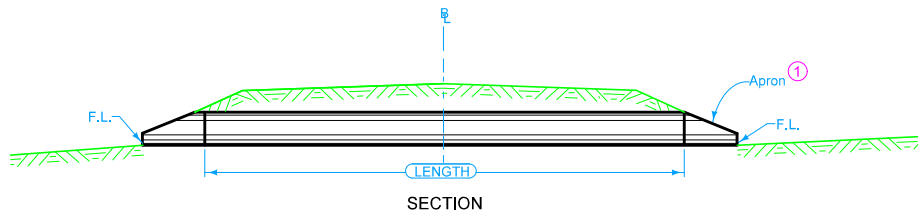



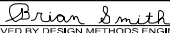
℄ is ℄ of roadway, dike, survey, or other as detailed on plans.

Skew angle is the angle which one end of the pipe is ahead (by stationing) of line perpendicular to the ℄.
(Example: skew Rt. ahead 30 degrees)

① See DR-201 for concrete, DR-203 for metal.



Possible Tabulation:
104-3

	REVISION	
	New	04-21-15
STANDARD ROAD PLAN	DR-601	
SHEET 1 of 1		
REVISIONS: New. Replaces Detail 1101.		
 APPROVED BY DESIGN METHODS ENGINEER		
REINFORCED CONCRETE PIPE CULVERT		