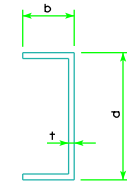


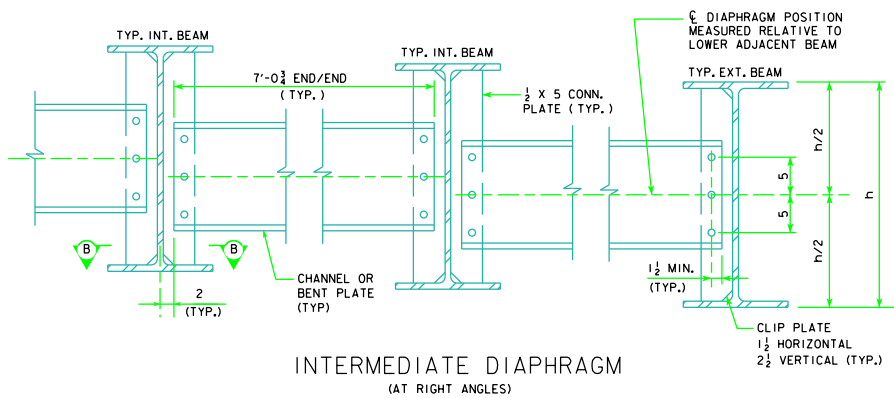
ABUTMENT DIAPHRAGM  
(ALONG SKEW)

SKEW	a (FT-IN)
0°	7'-0 3/4
10°	7'-2 1/8
20°	7'-6 3/8
30°	8'-1 7/8
45°	9'-11 1/4

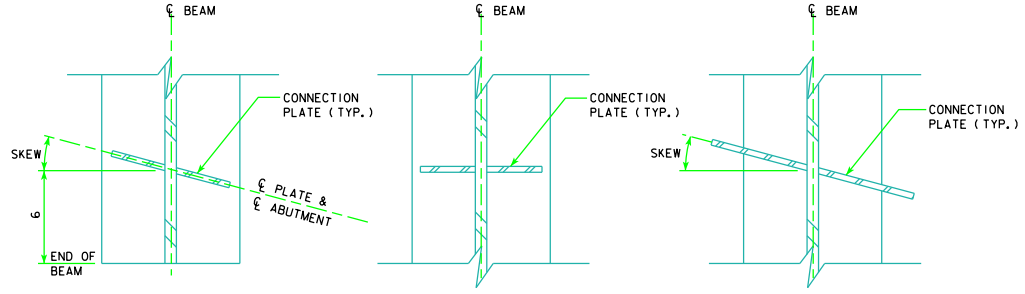


BENT PLATE DIAPHRAGM OPTION

DIAPHRAGM MEMBER OPTIONS							
DIAPHRAGM LOCATION	BEAM SIZE	CHANNEL OPTION		BENT PLATE OPTION			
		DESIGNATION	CONN. BOLTS	d (IN)	b (IN)	t (IN)	CONN. BOLTS
INTERMEDIATE	W30 & W33	C15x33.9	3 - 7/8"φ	15	4	3/8	3 - 7/8"φ
INTERMEDIATE	W36, W40 & W44	MC18x42.7	3 - 7/8"φ	18	4	3/8	3 - 7/8"φ
ABUTMENT	ALL	C12x20.7	3 - 7/8"φ	12	4	3/8	3 - 7/8"φ
PIER	W30 & W33	C15x33.9	12 - 7/8"φ	15	4	3/8	12 - 7/8"φ
PIER	W36, W40 & W44	MC18x42.7	12 - 7/8"φ	18	4	3/8	12 - 7/8"φ



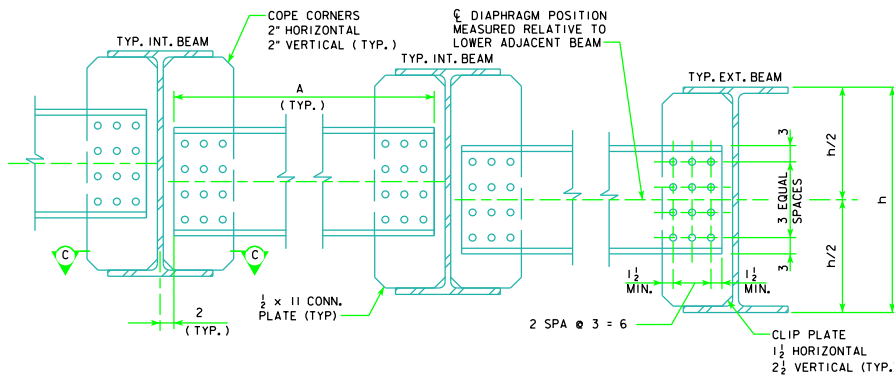
INTERMEDIATE DIAPHRAGM  
(AT RIGHT ANGLES)



SECTION A-A

SECTION B-B

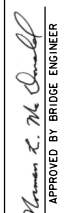

SECTION C-C  
FOR 45° SKEW, CONNECTION PLATES ARE AT RIGHT ANGLES



PIER DIAPHRAGM  
(ALONG SKEW FOR 0°, 10°, 20° AND 30° SKEW)  
(AT RIGHT ANGLES FOR 45° SKEW)

SKEW	A (FT-IN)
0°	7'-0 3/4
10°	7'-2 1/8
20°	7'-6 3/8
30°	8'-1 7/8
45°	9'-11 1/4

NOTES:  
1. EITHER CHANNEL OR BENT PLATE DIAPHRAGM OPTION MAY BE SELECTED AT CONTRACTOR'S OPTION.

LATEST REVISION DATE	 APPROVED BY BRIDGE ENGINEER	 <b>Iowa Department of Transportation</b> Highway Division	STANDARD DESIGN - 40' ROADWAY, 3 SPAN BRIDGES <b>ROLLED STEEL BEAM BRIDGES</b> JUNE, 2010