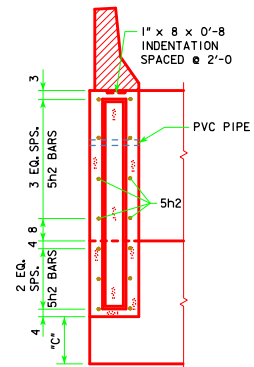
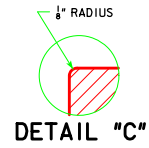


PART LONGITUDINAL SECTION NEAR GUTTER

PART END VIEW AT ABUTMENT



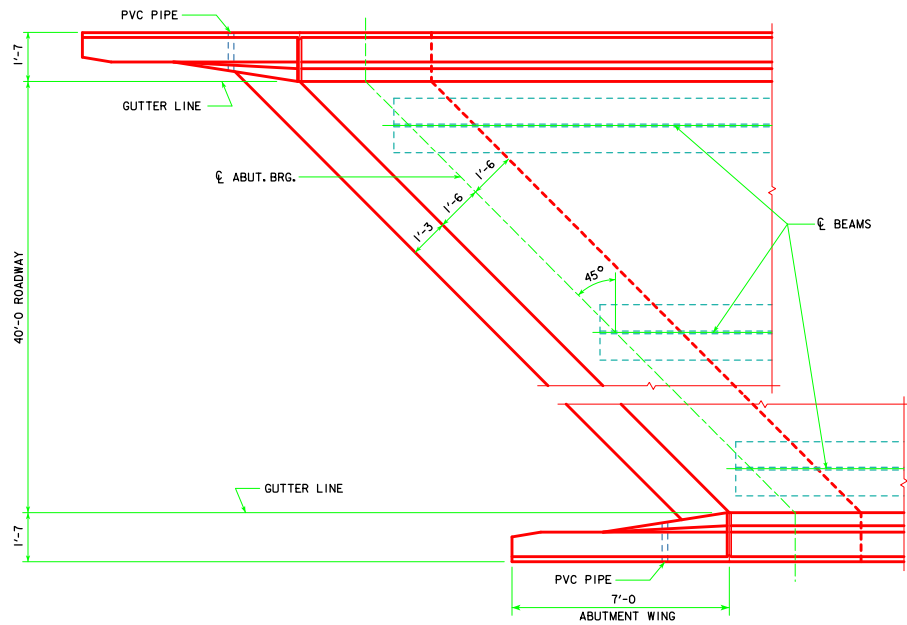
SECTION A-A



DETAIL "C"

NOTE:
PLUG 3" ϕ PVC PIPE WITH EXPANDING
FOAM PRIOR TO BACKFILLING BEHIND
ABUTMENTS.

NOTE:
FOR ELEVATION A, ELEVATION B AND
DIMENSION C SEE "MISCELLANEOUS DETAILS"
FOR THE APPROPRIATE LENGTH BRIDGE.



PART PLAN

(STEEL DIAPHRAGMS NOT SHOWN)

LATEST REVISION DATE	 APPROVED BY BRIDGE ENGINEER	 STANDARD DESIGN - 40' ROADWAY, 3 SPAN BRIDGES ROLLED STEEL BEAM BRIDGES OCTOBER, 2014	
		LONGITUDINAL SECTION 45° SKEW	RS40-027-14