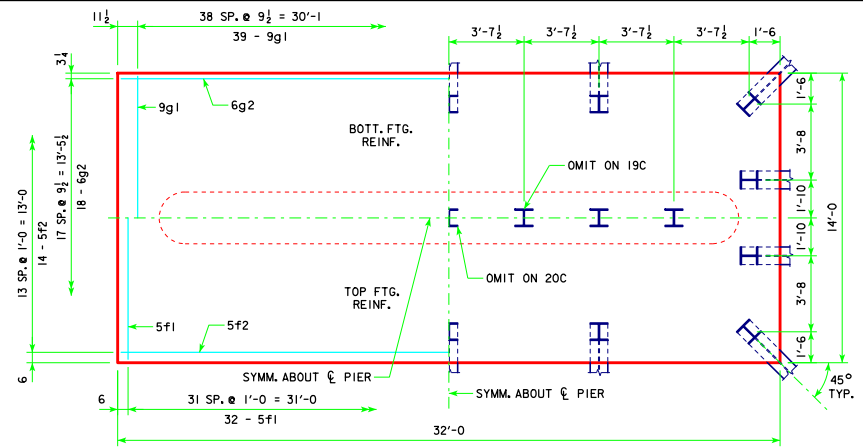
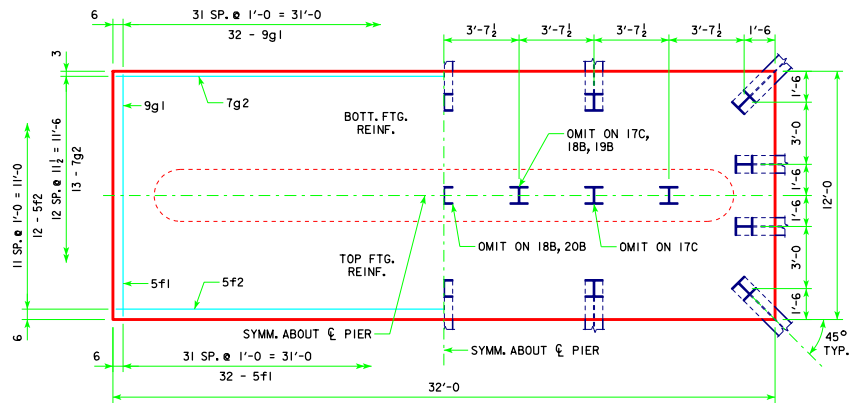


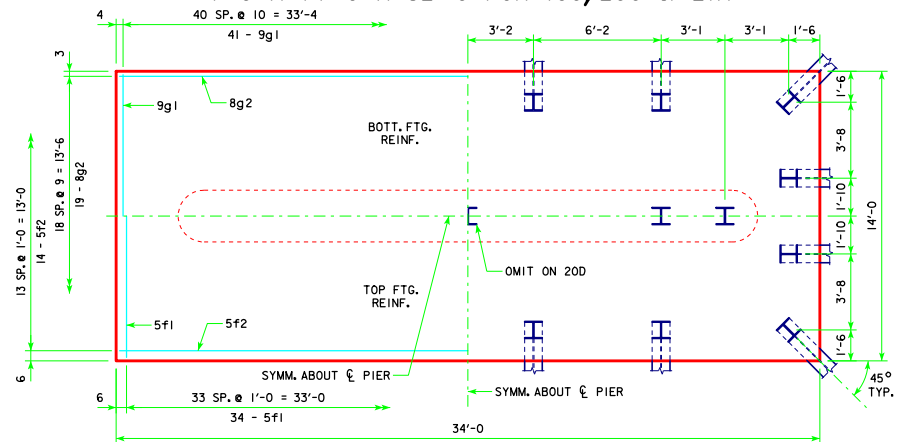
4'-0" x 11'-0" x 32'-0" FOR 15D, 16C, 17B, 18A, 19A & 20A



4'-0" x 14'-0" x 32'-0" FOR 19C, 20C & 21A



4'-0" x 12'-0" x 32'-0" FOR 17C, 18B, 19B & 20B



4'-0" x 14'-0" x 34'-0" FOR 20D & 21B

NOTE:
SEE SHEET RS40-161-14 FOR FOOTING NOTES.

LATEST REVISION DATE	 APPROVED BY BRIDGE ENGINEER	 STANDARD DESIGN - 40' ROADWAY, 3 SPAN BRIDGES ROLLED STEEL BEAM BRIDGES OCTOBER, 2014	
		TEE PIER-HPI0x57 SRL-2 STEEL PILE FOOTINGS <small>45° SKEW - SHEET 3</small>	RS40-163-14