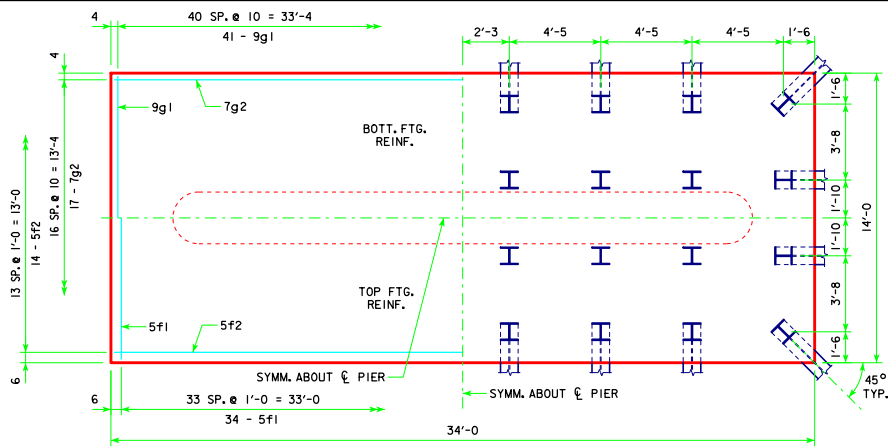
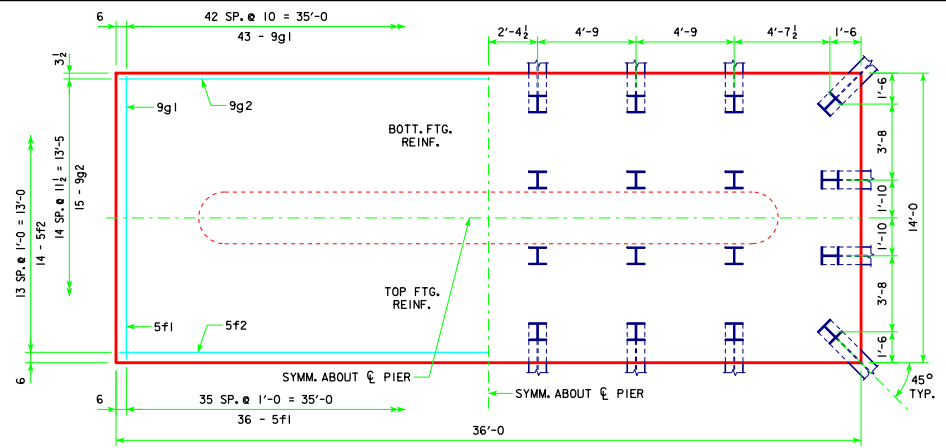


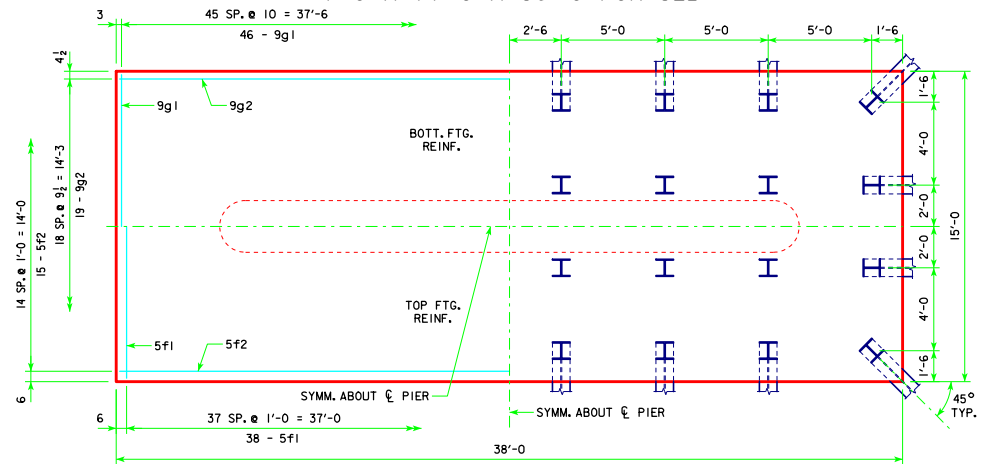
REVISED 05-13 - REVISION FOR LRFD PILE DESIGN.



4'-0 x 14'-0 x 34'-0 FOR 32A



4'-0 x 14'-0 x 36'-0 FOR 32B



4'-0 x 15'-0 x 38'-0 FOR 32C

NOTE:
SEE SHEET RS40-158-10 FOR FOOTING NOTES.

05-13 LATEST REVISION DATE <i>Thomas E. Mc Donnell</i> APPROVED BY BRIDGE ENGINEER	<p>Iowa Department of Transportation Highway Division</p>
	STANDARD DESIGN - 40' ROADWAY, 3 SPAN BRIDGES ROLLED STEEL BEAM BRIDGES JUNE, 2010
TEE PIER-HPI0x57 SRL-1 STEEL PILE FOOTINGS 45° SKEW - SHEET 3	
RS40-160-10	