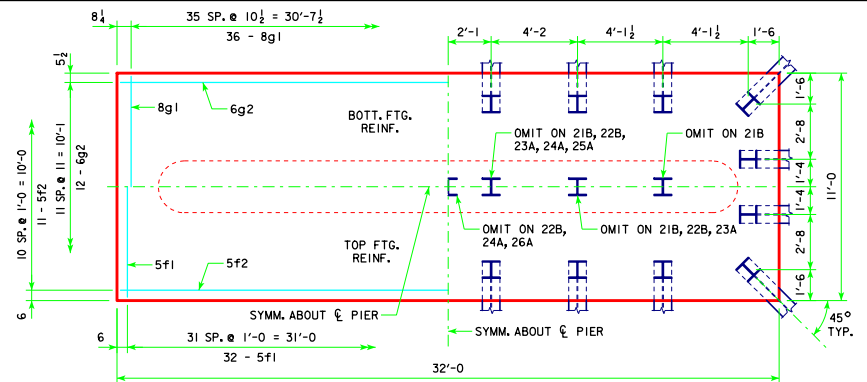
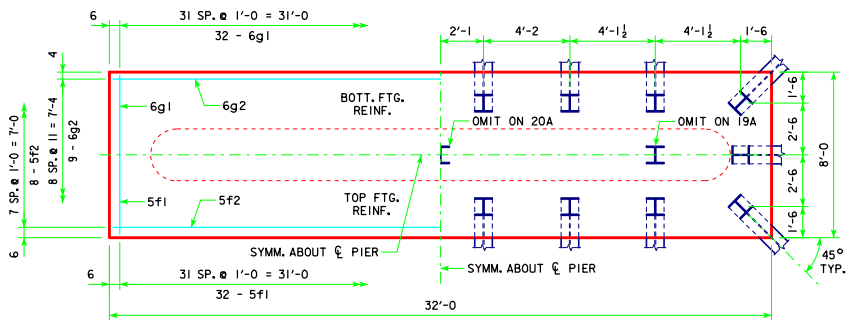


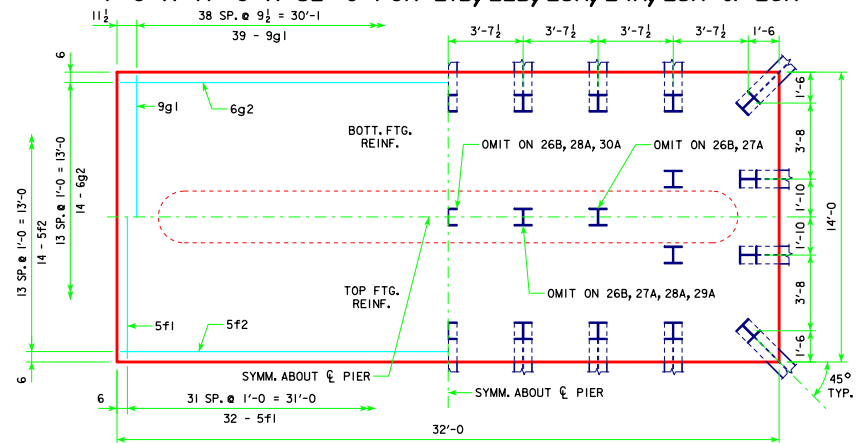
4'-0 x 8'-0 x 32'-0 FOR 17A & 18A



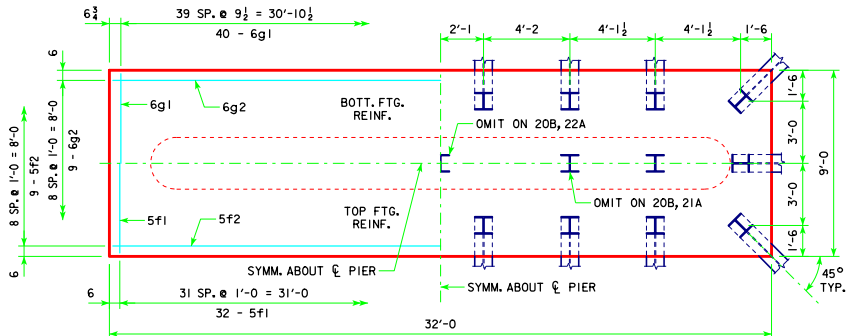
4'-0 x 11'-0 x 32'-0 FOR 21B, 22B, 23A, 24A, 25A & 26A



4'-0 x 8'-0 x 32'-0 FOR 19A & 20A



4'-0 x 14'-0 x 32'-0 FOR 26B, 27A, 28A, 29A, 30A & 31A



4'-0 x 9'-0 x 32'-0 FOR 20B, 21A & 22A

NOTE:
SEE SHEET RS40-158-14 FOR FOOTING NOTES.

LATEST REVISION DATE <i>Thomas E. McQuinn</i> APPROVED BY BRIDGE ENGINEER	
	STANDARD DESIGN - 40' ROADWAY, 3 SPAN BRIDGES ROLLED STEEL BEAM BRIDGES OCTOBER, 2014
	TEE PIER-HPI0x57 SRL-1 STEEL PILE FOOTINGS <small>45° SKEW - SHEET 2</small>

RS40-159-14