

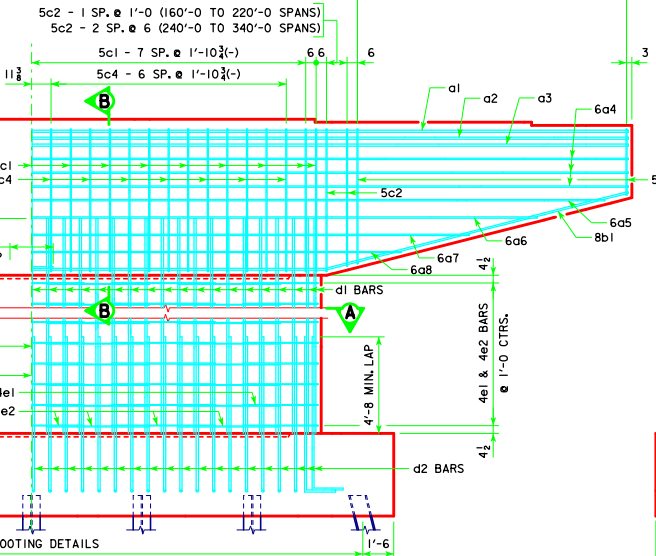
NOTE:
ANCHOR BOLTS REQUIRED FOR FIXED
PIER BEARINGS ONLY. FOR BOLT AND
BEARING SIZES, SEE RS40-093-14,
RS40-094-14 OR RS40-095-14.

CAP PLAN

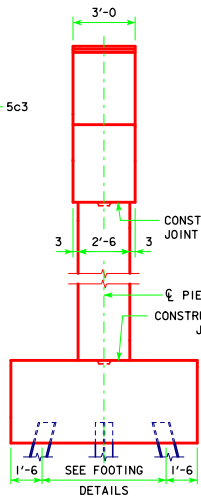
(LAYOUT OF d1 BARS SHOWN IS
FOR 160'-0 TO 200'-0 SPANS)

- 160'-0 TO 240'-0 SPANS 5c3 - 13 SP. @ 1'-0 = 13'-0
- 260'-0 TO 280'-0 SPANS 5c3 - 17 SP. @ 9 1/2' (+) = 13'-0
- 300'-0 TO 340'-0 SPANS 5c3 - 22 SP. @ 7 1/4' (-) = 13'-0

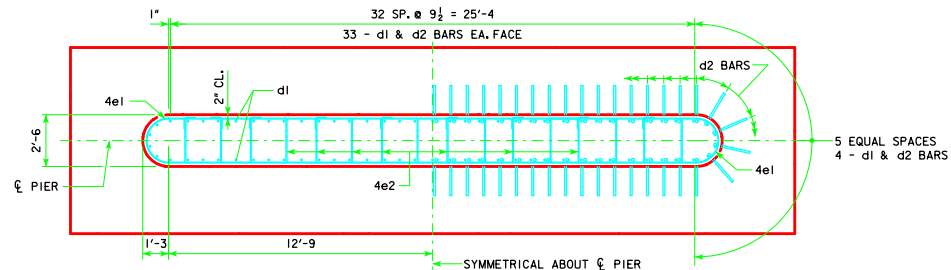
NOTE:
SHIFT 5c1 BARS TO CLEAR
d1 COLUMN BARS ALL SPANS.



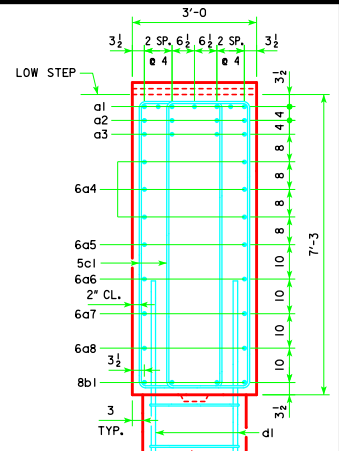
FRONT ELEVATION



END ELEVATION

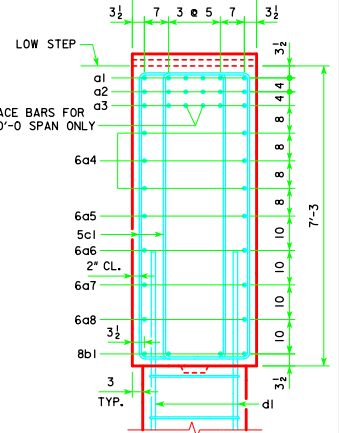


SECTION A-A



SECTION B-B

160'-0 TO 200'-0 SPANS



SECTION B-B

220'-0 TO 340'-0 SPANS

LATEST REVISION DATE
Thomas E. Mc Donnell
APPROVED BY BRIDGE ENGINEER



STANDARD DESIGN - 40' ROADWAY, 3 SPAN BRIDGES
ROLLED STEEL BEAM BRIDGES
OCTOBER, 2014

**TEE PIER CAP &
COLUMN DETAILS**
45° SKEW

RS40-156-14