

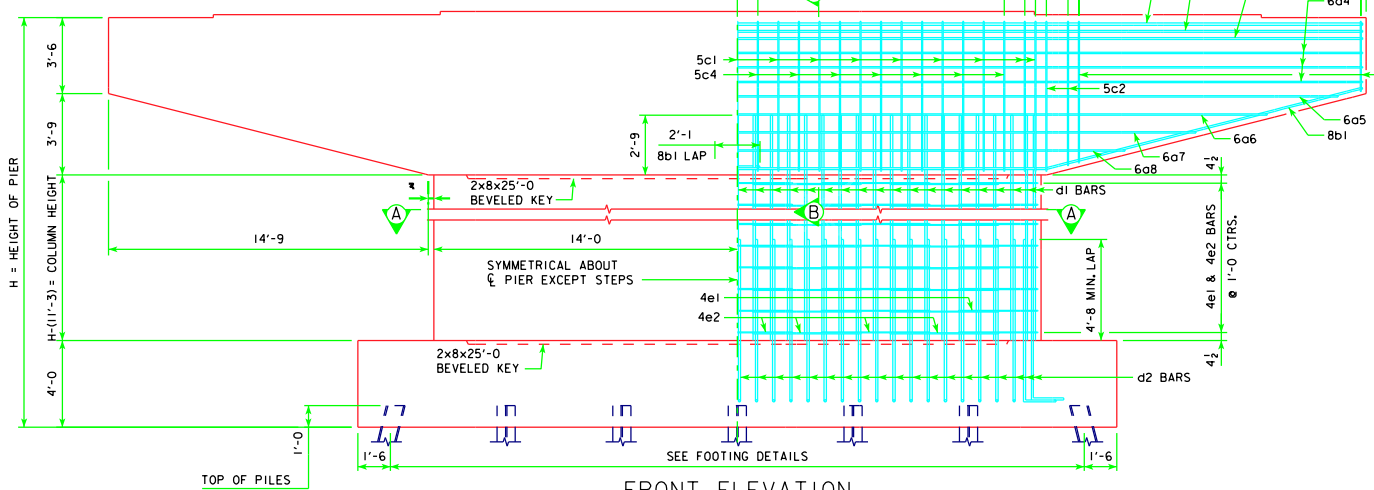
NOTE:  
ANCHOR BOLTS REQUIRED FOR FIXED  
PIER BEARINGS ONLY. FOR BOLT AND  
BEARING SIZES, SEE RS40-093-10,  
RS40-094-10 OR RS40-095-10.

**CAP PLAN**  
(LAYOUT OF d1 BARS SHOWN IS  
FOR 160'-0 TO 200'-0 SPANS)

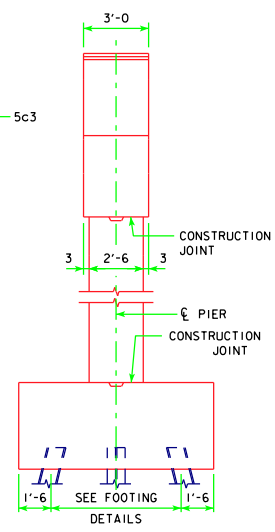
- 160'-0 TO 240'-0 SPANS      5c3 - 13 SP. @ 1'-0 = 13'-0
- 260'-0 TO 280'-0 SPANS      5c3 - 17 SP. @ 9 1/2' (+) = 13'-0
- 300'-0 TO 340'-0 SPANS      5c3 - 22 SP. @ 7 1/2' (-) = 13'-0

NOTE:  
SHIFT 5c1 BARS TO CLEAR  
d1 COLUMN BARS ALL SPANS.

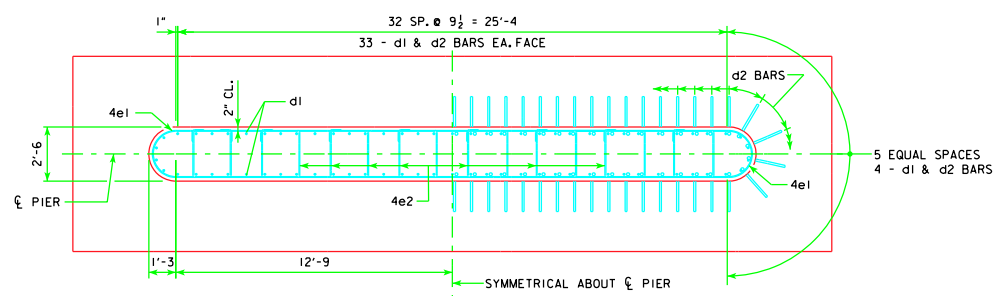
- 5c2 - 1 SP. @ 1'-0 (160'-0 TO 220'-0 SPANS)
- 5c2 - 2 SP. @ 6 (240'-0 TO 340'-0 SPANS)
- 5c1 - 7 SP. @ 1'-10 1/2' (-)
- 5c4 - 6 SP. @ 1'-10 1/2' (-)



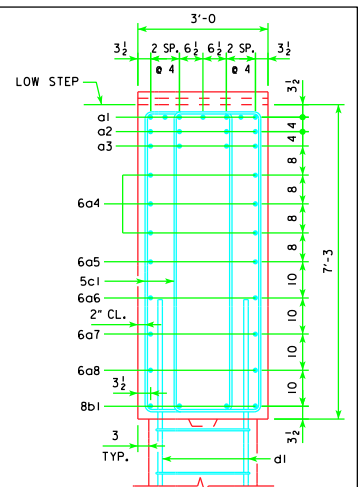
**FRONT ELEVATION**



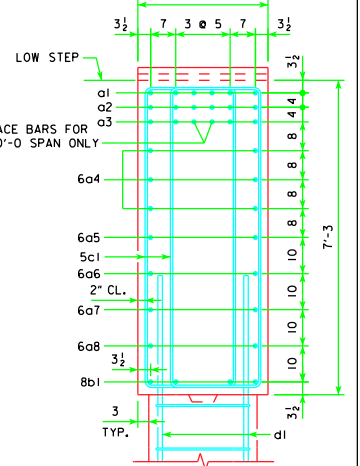
**END ELEVATION**



**SECTION A-A**



**SECTION B-B**  
160'-0 TO 200'-0 SPANS



**SECTION B-B**  
220'-0 TO 340'-0 SPANS

LATEST REVISION DATE  <i>Thomas L. McDonald</i> APPROVED BY BRIDGE ENGINEER		
	STANDARD DESIGN - 40' ROADWAY, 3 SPAN BRIDGES <b>ROLLED STEEL BEAM BRIDGES</b> JUNE, 2010	
	<b>TEE PIER CAP &amp; COLUMN DETAILS</b> 45° SKEW	<b>RS40-156-10</b>